

Change }
No. 1 }

HEADQUARTERS
DEPARTMENT OF THE ARMY
Washington, D. C., 8 February 1972

Direct Support and General Support Repair Parts and Special Tools List (Including Depot Maintenance Allowances)

GENERATOR ASSEMBLY (2920-903-9534) (PRESTOLITE MODEL GHA-4804 JUT) AND GENERATOR ASSEMBLY (2920-737-4750) (AUTOLITE MODEL GHA-4802 UT)

TM 9-2920-247-34, 20 June 1966, is changed as follows:

Front Cover. Change title to read as shown above.

Page 3, paragraph 1-1a, line 2 and 3. Change portion reading "of generator assembly, 2920-903-9534 (fig. 1-1)," to read "of generator assemblies 2920-737-4750 and 2920-903-9534."

Page 3, paragraph 1-1d is superseded as follows: *d.* The reporting of errors, omissions, and recommendations for improving this publication by the individual user is encouraged. Reports should be submitted on DA Form 2028 (Recommended Changes to Publications) and forwarded direct to: Commanding General, US Army Tank-Automotive Command, ATTN: AMSTA-MAP, Warren, MI 48090.

Page 4, paragraph 1-4.1 is added as follows:

1.4.1 Differences in Models

The GHA-4804-JUT generator is a superseding improved version of the GHA-4802-UT Model; the GHA-4802-UT is no longer procured. Included in the improvements to the GHA-4804-JUT Model are an internally sealed, fungus proof, receptacle assembly; a positive waterproof seal on the armature shaft; and two permanently sealed and permanently lubricated ball bearings supporting the armature. The GHA-4802-UT Model has unsealed, oil-splash type lubricated bearings; however, after this generator is repaired with the parts kit listed in this manual, both models will be virtually the same (see note in paragraph 4-11c).

Page 4, paragraph 1-5. Change title to read, **1-5. Data, Model GHA-4804-JUT**

Page 4. Paragraph 1-5.1 is added after paragraph 1-5.

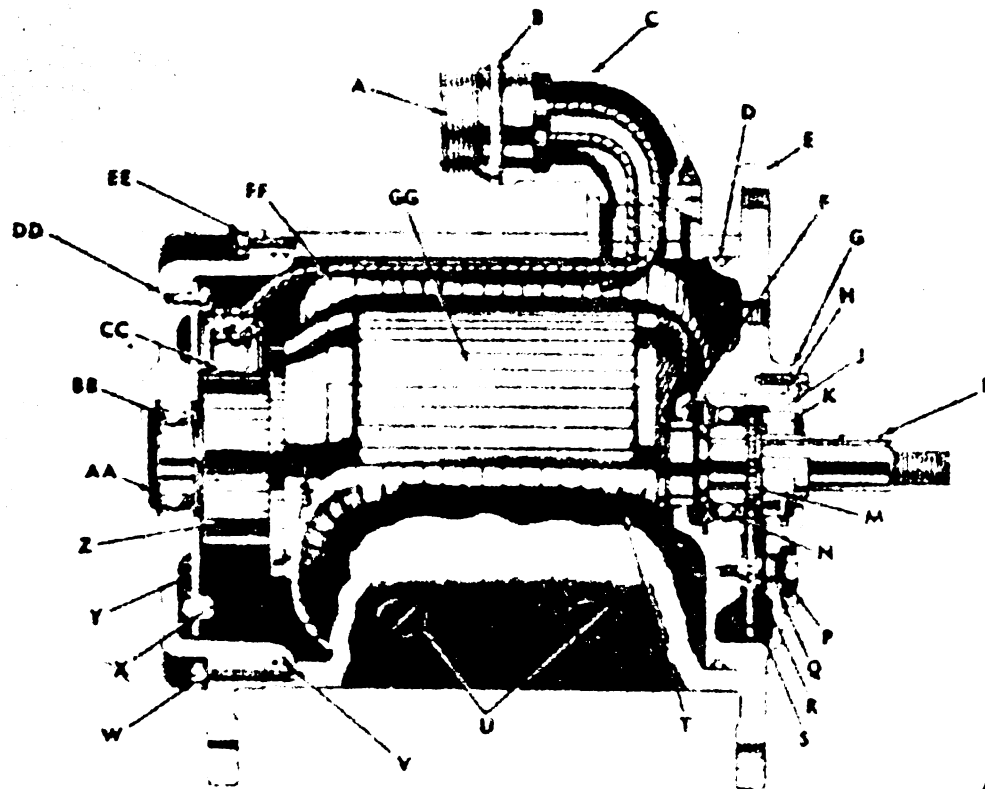
1-5.1 Data, Model GHA-4802-UT

Manufacturer	Autolite (now Prestolite)
Model No.	GHA-4802-UT
Ordinance No.	7524310
Federal stock no.	2920-737-4750
Rating	volts, dc, 25 amperes
Operating range	1750-8000 rpm
Type	Shunt-field
No. of brushes	2
Armature rotation	Clockwise from drive end
Control of output	Remote voltage regulator

*This change supersedes TM 9-2920-209-35, 26 March 1964 including all changes.

Page 5, figure 1-2. Add (Model GHA-4804 JUT) to the figure title.

Page 5. Add figure 1.2.1 after figure 1-2.-



AT 41565

A—Receptacle connector	J—Preformed packing	S—Oil slinger	AA—Bearing recess
B—Gasket	K—Plain encased seal	T—Generator field windings	BB—Ball bearing
C—Receptacle elbow	L—Woodruff key	U—Pole shoe screw	CC—Brush
D—Preformed packing	M—Oil slinger drive gear	V—Preformed packing	DD—Commutator end bell
E—Drive end bell	N—Ball bearing	W—Pan head machine screw	EE—Fillister head machine screw
F—Felt washer and retainer	P—Machine plug	X—Pan head machine screw	FF—Generator field winding
G—Bearing retainer	Q—Preformed packing	Y—Brush holder assembly	GG—Armature assembly
H—Preformed packing	R—Screw pin	Z—Commutator	

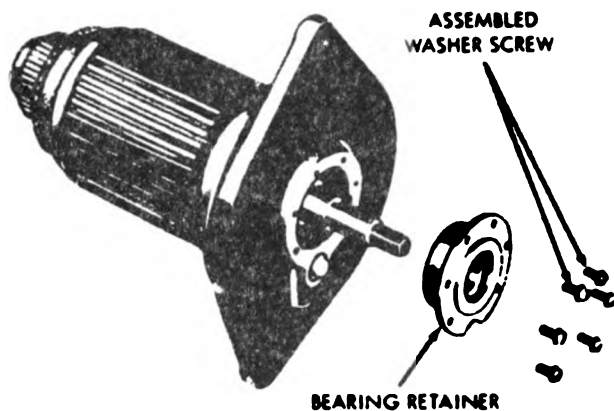
Figure 1-2.1 Generator (Model GHA-4802-UT)—sectional view.

Page 8, paragraph 3-4a(3) is superseded as follows: (3) If end-play is not within these limits, either improper generator assembly or a damaged bearing in the drive end bell is indicated.

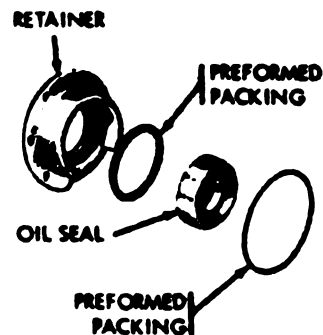
Page 12, paragraph 4-3b. Change last sentence in sub-paragraph to read, "Remove the drive end bell from the armature as shown in figure 4-5 for Model GHA-4804 JUT and as shown in figure 4-5.1 for Model GHA-4802 UT."

Page 14, figure 4-5. Add (Model GHA-4804 JUT) to figure title.

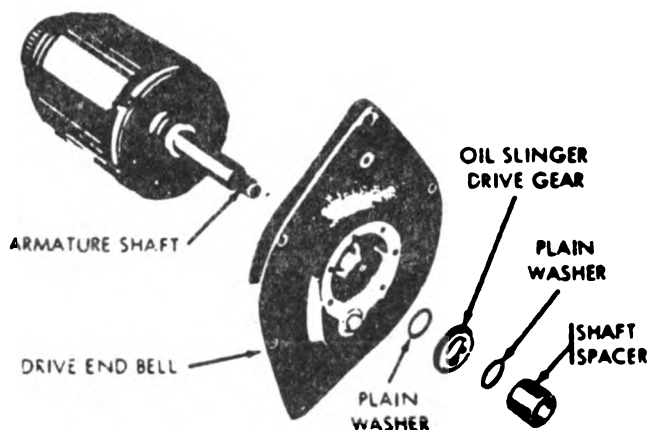
Page 14. Add figure 4-5.1 after figure 4-5.



STEP 1. REMOVE SIX ASSEMBLED WASHER SCREWS SECURING BEARING RETAINER TO END BELL AND REMOVE RETAINER OIL SEAL AND PREFORMED PACKING MAY COME OFF WITH RETAINER. IF SO, PRESS SEAL FROM RETAINER USING A SUITABLE ARBOR PRESS. SEE FIGURE 13, STEP 2.



STEP 2. REMOVE LARGE PREFORMED PACKING, OIL SEAL, AND SMALL PREFORMED PACKING FROM RETAINER. DISCARD PREFORMED PACKINGS.



STEP 3. REMOVE ARMATURE SHAFT FROM DRIVE END BELL USING A SUITABLE ARBOR PRESS. REMOVE SHAFT SPACER, COPPER WASHER, OIL SLINGER DRIVE GEAR, AND COPPER WASHER FROM DRIVE END BELL.

AT 41567

Figure 4-5.1 Removing armature assembly from drive end bell (model GHA 4802 UT).

Page 15, paragraph 4-4b. Subparagraph is superseded as follows:

b.) Disassembly. Remove the bearing and associated parts from the end bell as shown in figure 4-6 for Model GHA-4804 JUT, and as shown in figure 4-6.1 for Model GHA-4802 UT.

Page 15, Figure 4-6. Add (Model GHA 4804 JUT) to title of illustration.

Page 15. Add figure 4-6.1 after Figure 4-6.

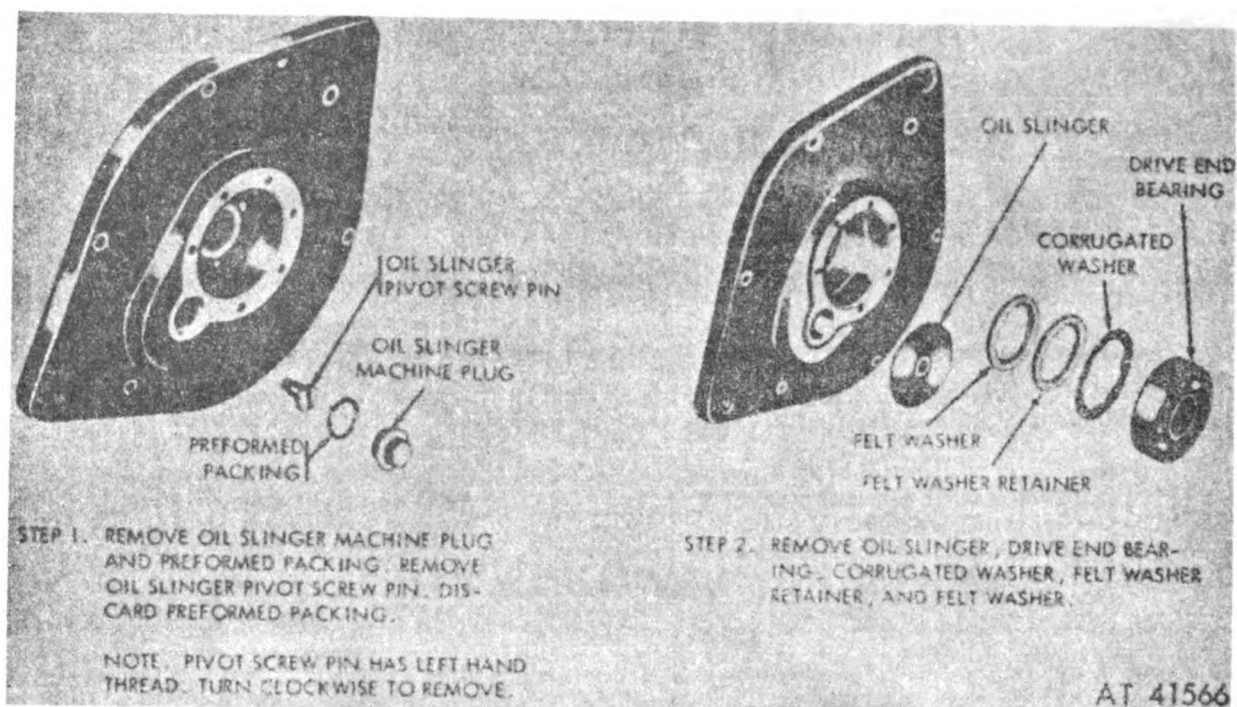
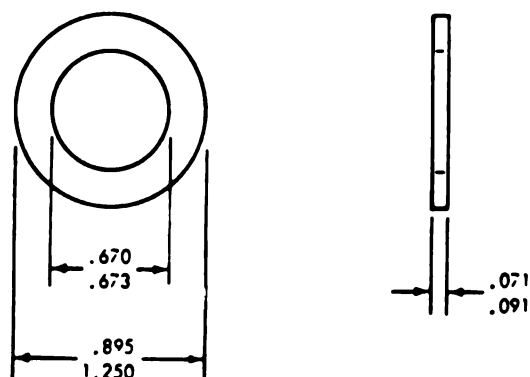


Figure 4-6.1 Disassembling drive end bell (model GHA 4402 UT)

Page 15. Add figure 4-7.1 after figure 4-7.



MATERIAL:
STEEL, CARBON COLD POLLED,
COMMERCIAL QUALITY, SPEC QQ-S-634

FINISH:
CADMIUM PLATE, TYPE II,
CLASS 2, SPEC QQ-P-416.

AT 46638

Figure 4-7.1 Spacer washer (used with permanently sealed commutator end bearing).

Page 17, Figure 4-10. Change illustration callout, "lead (C)" to read, "lead (A & C);" change callout, "lead (A & B)" to read, "lead (B)."

Page 22, paragraph 4-11c. Add note at end of paragraph reading as follows:

NOTE

When assembling the above kit into the GHA-4802 UT generator, the following additional steps must be taken:

Discard pivot screw pin and oil slinger (figure 4-6.1) and replace machine plug with new packing and break-off plug. Tighten plug until it shears.

Replace oil slinger drive gear (figure 4-5.1) with the noncorrosive, oil seal plate (figure 4-23) furnished with the oil seal.

Use salvaged washer from cannibalized GHA-4804 JUT generator as illustrated in figure 4-7, or fabricate one in accordance with washer detailed on figure 4-1.1.

Page 24, paragraph 4-18. Change figure A-2 (referenced five places in table) to read B-1.

Page 26, paragraph A-4, line 34. Change TM 9-2320-235-20 to read TM 9-2320-209-20.

Page 27 through 33, Appendix B has been superseded as follows:

APPENDIX B REPAIR PARTS LIST

Section I. INTRODUCTION

B-1. Scope

This appendix lists repair parts required for the performance of direct support, general support, and depot maintenance of the generator assembly, Prestolite Model GHA-4804 JUT, and Autolite Model GHA-4802UT.

B-2. General

This Repair Parts List is divided into the following sections:

a. *Repair Parts—Section II.* A list of repair parts authorized for the performance of maintenance at the direct support, general support, and depot level in figure and item number sequence.

b. *Special Tools—Section III.* Not applicable.

c. *Federal Stock Number and Reference Number Index—Section IV.* A list of Federal Stock numbers in ascending numerical sequence followed by a list of reference numbers in ascending alpha-numeric sequence, cross-referenced to the illustration figure number and item number.

B-3. Explanation of Columns

The following provides an explanation of columns in the tabular lists in Section II.

a. *Source, Maintenance, and Recoverability Codes (SMR), Column 1.*

(1) Source Code indicates the selection status and source for the listed item. Source Codes are:

Code	Explanation
P	Repair Parts, Special Tools and Test Equipment supplied from the GSA/DSA, or Army supply system, and authorized for use at indicated maintenance categories.
P2	Repair Parts, Special Tools and Test Equipment which are procured and stocked for insurance purposes because the combat or military essentiality of the end item dictates that a minimum quantity be available in the supply system.
P9	Assigned to items which are NSA design controlled: unique repair parts, special tools test, measuring, and diagnostic equipment, which are stocked and supplied by the Army COMSEC Logistic System and which are not subject to the provisions of AR 380-41.

Code	Explanation
P10	Assigned to items which are NSA design controlled: special tools, test, measuring, and diagnostic equipment for COMSEC support, which are accountable under the provisions of AR 380-41, and which are stocked and supplied by the Army COMSEC Logistic System.
M	Repair Parts, Special Tools and Test Equipment which are not procured or stocked as such, in the supply system, but are to be manufactured at indicated maintenance levels.
A	Assemblies which are not procured or stocked as such, but are made up of two or more units. Such component units carry individual stock numbers and descriptions, are procured and stocked separately and can be assembled to form the required assembly at indicated maintenance categories.
X	Parts and assemblies that are not procured or stocked because the failure rate is normally below that of the applicable end item of component. The failure of such part or assembly should result in retirement of the end item from the supply system.
X1	Repair Parts which are not procured or stocked. The requirement for such items will be filled by the next higher assembly or component.
X2	Repair Parts, Special Tools, and Test Equipment which are not stocked and have no foreseen mortality. The indicated maintenance category requiring such repair parts will attempt to obtain the parts through cannibalization or salvage; if not obtainable through cannibalization or salvage, the item may be requisitioned with exception data — from the end item manager — for immediate use.
G	Major assemblies that are procured with PEMA funds for initial issue only as exchange assemblies at DSL and GSC level. These assemblies will not be stocked above the DS and GS level or returned to depot supply level.

NOTE

Cannibalization or salvage may be used as a source or supply for any items source coded above, except those coded X1.

(2) Maintenance code indicates the lowest category of maintenance authorized to install the listed item. The maintenance level codes are:

Code	Explanation
C	Crew or operator maintenance.
O	Organizational maintenance.
F	Direct support maintenance.

Code	Explanation
H	General support maintenance.
D	Depot maintenance.

(3) Recoverability Code indicates whether unserviceable items should be returned for recovery or salvage. Recoverability codes are:

Code	Explanation
R	Applied to repair parts (assemblies and components), special tools, and test equipment which are considered economically reparable at direct and general support maintenance levels. When the item is no longer economically reparable, it is normally disposed of at the GS level. When supply considerations dictate, some of these repair parts may be listed for automatic return to supply for depot level repair as set forth in AR 710-50. When so listed, they will be replaced by supply on an exchange basis.
S	Repair Parts, Special Tools, Test Equipment, and assemblies which are economically reparable at DSU and GSU activities and which normally are furnished by supply on an exchange basis. When items are determined by a GSU to be uneconomically reparable, they will be evacuated to a depot for evaluation and analysis before final disposition.
T	Higher dollar value recoverable repair parts, special tools and test equipment which are subject to special handling and are issued on an exchange basis. Such items will be evacuated to the depot for overhaul or final disposition. Communications-electronics, and missile support items will be repaired or overhauled only at depots.
U	Repair Parts, Special Tools and Test Equipment specifically selected for salvage by reclamation units because of precious metal content, critical materials, high dollar value or reusable casings or castings.

NOTE

When no code is indicated in the recoverability column, the part will be considered nonrecoverable.

b. Federal Stock Number (FSN), Column 2. This column indicates the Federal stock number assigned to the item and will be used for requisitioning purposes.

c. Description, Column 3. This column indicates the Federal item name and any additional description of the item required. A part number or other reference number is followed by the applicable five-digit Federal supply code for manufacturers in parentheses. Repair parts quantities included

in the kits, sets, and assemblies are shown in front of the repair part name.

d. Unit of Measure (U/M), Column 4. A 2-character alphabetic abbreviation indicating the amount or quantity of the item upon which the allowances are based; e.g., ft., ea., pr.; etc:

e. Quantity Incorporated in Unit, Column 5. This column indicates the quantity of the item used in the assembly group.

f. 30-Day DS/GS Maintenance Authorization, Columns (6), and (7). The repair parts list includes asterisk entries in separate columns—one for Direct Support (DS) and one for General Support (GS) as appropriate—to indicate the total range of repair parts authorized for use at that category, or required to be removed or disassembled during the performance of authorized maintenance operations. They will be requisitioned initially on an as-required basis. The repair parts authorized at the DS/GS levels will be those authorized for the maintenance mission at these levels. Requirements for repair part stockage and for distribution to supported units will be based on demand and determined in accordance with AR 710-2.

g. 1-Year Allowances Per 100 Equipments/Contingency Planning Purposes Column(8). This column indicates the requirement for contingency planning purposes. An asterisk indicates authorization to obtain or use as required.

h. Depot Maintenance Allowances Per 100 Equipments, Column 9. This column indicates authorization for depot use.

i. Illustration, Column(10). This column is divided as follows:

(1) **Figure Number, Column(10)(a).** Indicates the figure number of the illustration in which the item is shown.

(2) **Item Number, Column (10)(b).** Indicates the callout number used to reference the items in the illustration.

B-4. Special Information

a. End Item Application:

TM 9-2320-206-series	Truck, 10-ton, 6x6, M123 series (Le Roi model T-H 844 engine, TM 9-2805-208-34P).
TM 9-2320-209-series	Truck, 2 1/2-ton, 6x6, M44 series (Rev model O A331 engine, TM 9-2805-222-series).

TM 9-2320-210-series	Truck, 2½-ton, 6 x 6 M135 series (GMC model 302, TM 9-8025-1).
TM 9-2320-211-series	Truck, 5-ton, 6 x 6, M39 series (Continental model R 6602 engine, TM 9-2805-203-series; Mack Diesel model ENDT 673 engine, TM 9-2815-207-35; Military model LDS 465-1 engine, TM 9-2815-210-series).
TM 9-2320-212-series	Truck, 3/4-ton, 4 x 4, M37 series (Dodge model T-245 engine, TM 9-1840A).
TM 9-2320-218-series	Truck, 1/4-ton, 4 x 4, M151 series (Ford model M151 engine).
TM 9-8014	Truck, 1/4-ton, 4x4, M38A1 series (Willys model MD engine)

b. Generator repair kit, FSN 2920-903-0582, services both generator assemblies, Prestolite model 4804 GHA-4804 JUT and Autolite model GHA-4802 UT.

c. Lower case key letters shown on figure B-1 are reference points for repair standards listed in the maintenance portion of this manual, and refer to paragraph 4-18.

B-5. How to Locate Repair Parts

a. When Federal stock number or reference number is unknown:

(1) *First*. Find the illustration (figure B-1) to which the repair part belongs.

(2) *Second*. Identify the repair part on the illustration, and note the item number of the repair part.

(3) *Third*. Using the repair parts listing, locate

the item number noted on the illustration.

b. When Federal stock number or reference number is known:

(1) *First*. Using the Index of Federal stock numbers and reference numbers find the pertinent Federal stock number or reference number. This index is in ascending FSN sequence followed by a list of reference numbers in alpha-numeric sequence, cross-referenced to the illustration figure number and item number.

(2) *Second*. Using the repair parts listing, find the item number referenced in the index of federal stock numbers and reference numbers.

B-6. Abbreviations

N.I.—Not illustrated.

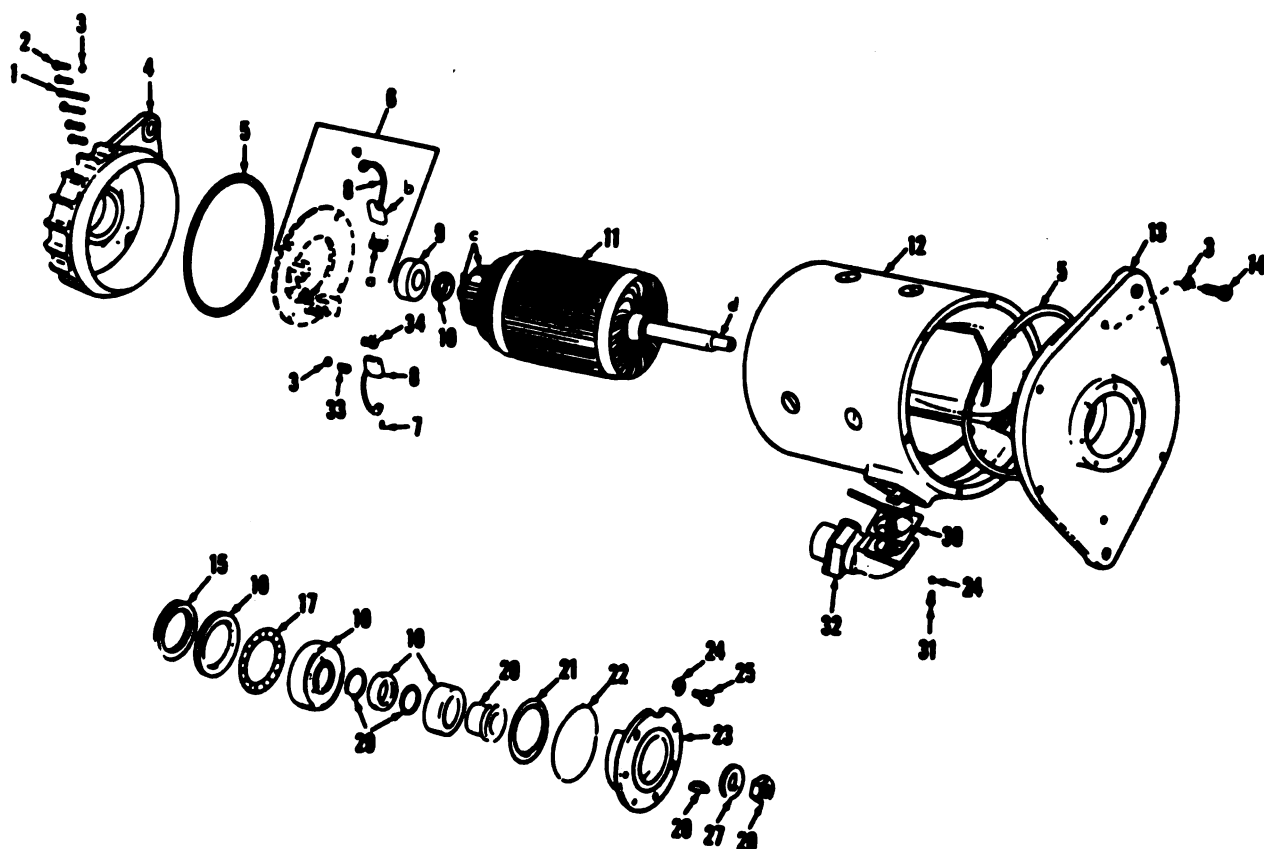
B-7. Federal Supply Code for Manufacturers

Code	Manufacturers
12603	Clark Equipment Co., Buchanan, MI 49107
19207	U.S. Army Tank-Automotive Command, Warren, MI 48090
19728	The Prestolite Co., Division of Eltra Corp., Toledo, OH 43602
21450	Ordnance Corps Engineering Standards, Rock Island Arsenal Rock Island, IL 61201
96906	Military Standards Promulgated by Standardization Division Directorate of Logistic Services, DSA

Section II. REPAIR PARTS LIST

(1) BMR code	(2) Federal stock No.	(3) Description Reference number and mfr code	(4) Unit measured in unit	(5) Qty inc in unit	(6) Direct support 30 day maint allowance			(7) General support 30 day maint allowance			(8) 1 Yr allow per equip plan- ning	(9) Depot main allow per equip	(10) Illustration	
													(A) Fig No	(B) Item No.
P-O-R	2920-903-9534	GROUP 06 ELECTRICAL SYSTEM 0601 GENERATOR ASSEMBLY GENERATOR, ENGINE ASSEMBLY, 10950808 (19207)	EA	1										
P-F	5305-995-3442	Consisting of: SCREW, MACHINE: Commutator end bell MS35207-268 (96906).	EA	2	•	•	•	•	•	•	•	•	B-1	1
P-F	5305-614-0247	SCREW, MACHINE: Commutator end bell MS35266-64 (96906).	EA	4	•	•	•	•	•	•	•	•	B-1	2
P-F	5310-576-5752	WASHER, LOCK: Brush holder (4), commutator end bell (6) MS35333-39 (96906).	EA	10	•	•	•	•	•	•	•	•	B-1	3
X2-F	2920-737-4739	END BELL: Commutator GHA1052 (19728).	EA	1	•	•	•	•	•	•	•	•	B-1	4
P-F	2920-737-4886	HOLDER ASSEMBLY, ELECTRICAL CONTACT BRUSH: W/brushes, brush holder, and springs 7374886 (19207).	EA	1	•	•	•	•	•	•	•	•	B-1	6
P-F	5305-270-7323	SCREW: Brush lead 833226 (19207).	EA	2	•	•	•	•	•	•	•	•	B-1	7
X2-F		WASHER: Armature shaft (used with grease bearing) GHS23 (19728).	EA	1	•	•	•	•	•	•	•	•	B-1	10
P-F	2920-903-1137	ARMATURE, GENERATOR: 10950809 (19207).	EA	1	•	•	•	•	•	•	•	•	B-1	11
X1		FRAME AND FIELD ASSEMBLY: GHA2051AS-1 (19728).		1									B-1	12
X2-F	2920-999-5281	HEAD DRIVE END GENERATOR: drive end 10950810 (19207).	EA	1	•	•	•	•	•	•	•	•	B-1	13
P-F	5305-995-3444	SCREW, MACHINE: Drive end bell MS35207-266 (96906).	EA	6	•	•	•	•	•	•	•	•	B-1	14
P-F	2920-737-4855	RETAINER: Bearing 7374855 (19207).	EA	1	•	•	•	•	•	•	•	•	B-1	23
P-F	5310-559-0070	WASHER, LOCK: Bearing retainer MS35333-38 (96906).	EA	6	•	•	•	•	•	•	•	•	B-1	24
P-F	5305-984-6193	SCREW, MACHINE: Bearing retainer MS35206-245 (96906).	EA	6	•	•	•	•	•	•	•	•	B-1	25
P-F	5999-254-5669	GASKET: Receptacle 874377 (12603).	EA	1	•	•	•	•	•	•	•	•	B-1	30
P-F	5305-984-6192	SCREW, MACHINE: Receptacle attaching MS35206-244 (96906).	EA	4	•	•	•	•	•	•	•	•	B-1	31
P-F	2920-946-8346	COUPLING, GENERATOR: Frame and field assembly 10950812 (19207).	EA	1	•	•	•	•	•	•	•	•	B-1	32

(11) SNA code	(12) Federal stock No.	(13) Description Reference number and mfr code	(14) Unit measure	(15) Qty inc in unit	(16) Direct support 30-day maint allowance			(17) General support 30-day maint allowance			(18) 1 Yr. allow per 100 equip. plan- ning	(19) Depot main allow per 100 equip.	(20) Illustration	
					(A) 1-30	(B) 31-60	(C) 61-100	(A) 1-30	(B) 31-60	(C) 61-100			(A) Fig. No.	(B) Item No.
		0601 GENERATOR ASSEMBLY (Continued) GENERATOR ENGINE ASSEMBLY: 109S0808 (19207) Continued Consisting of: Continued												
P-F	5305-989-6265	SCREW, MACHINE: Brush holder MS35207-262 (96906)	EA	4	•	•	•	•	•	•	•	•	B-1	33
P-F	2920-903-0582	PARTS KIT, ENGINE, GENERATOR: 5703308 (19207)	EA	1	•	•	•	•	•	•	•	•	NI	
P-F	5330-741-2437	Consisting of: PACKING: 7412437 (19207)	EA	2	•	•	•	•	•	•	•	•	B-1	5
P-F	5977-284-9404	BRUSH, SET, ELECTRICAL: 7374852 (19207)	EA	2	•	•	•	•	•	•	•	•	B-1	8
X1		BEARING BALL: 109S0814 (19207)	EA	1	•	•	•	•	•	•	•	•	B-1	9
P-F	5310-282-8865	WASHER, FELT: 7374859 (19207)	EA	1	•	•	•	•	•	•	•	•	B-1	15
P-F	2920-737-4860	RETAINER, PACKING: 7374860 (19207)	EA	1	•	•	•	•	•	•	•	•	B-1	16
P-F	2920-737-4858	RETAINER, GENERATOR: 7374858 (19207)	EA	1	•	•	•	•	•	•	•	•	B-1	17
X1		BEARING, BALL: 109S0815 (19207)	EA	1	•	•	•	•	•	•	•	•	B-1	18
X1		PLATE AND SEAL: 109S0813 (19207)	EA	1	•	•	•	•	•	•	•	•	B-1	19
P-F	2920-900-7905	SPACER, SLEEVE: 10944625 (19207)	EA	1	•	•	•	•	•	•	•	•	B-1	20
P-F	5330-265-1077	PACKING, PREFORMED: MS19513-220 (96906)	EA	1	•	•	•	•	•	•	•	•	B-1	21
P-F	5330-599-2181	PACKING, PREFORMED: 7375328 (19207)	EA	1	•	•	•	•	•	•	•	•	B-1	22
P-F	5315-616-5526	KEY: MS35756-8 (96906)	EA	1	•	•	•	•	•	•	•	•	B-1	26
P-F	5310-809-5998	WASHER, FLAT: MS27183-18 (96906)	EA	1	•	•	•	•	•	•	•	•	B-1	27
P-F	5310-902-9369	NUT, SELF-LOCKING: MS21083-N8 (96906)	EA	1	•	•	•	•	•	•	•	•	B-1	28
P-F	5340-737-4857	SHIM: 7374857 (19207)	EA	2	•	•	•	•	•	•	•	•	B-1	29
		PLUG, BREAKOFF: 109S0799 (19207)* PACKING, PREFORMED: 7375329 (19207)* *Not used in generator model C11A-4804 JUT used in conversion of generator C11A-4802 UT see note para 4-11c(1).	EA	1	•	•	•	•	•	•	•	•	NI	NI
P-F	2920-569-8901	PARTS KIT, BRUSH SET: 8333708 (19207)	EA	1	•	•	•	•	•	•	•	•	NI	
		Consisting of:												
P-F	5977-284-9404	BRUSH: 7374852 (19207)	EA	2	•	•	•	•	•	•	•	•	B-1	8
P-F	5360-734-7573	SPRING, BRUSH: 7347573 (19207)	EA	2	•	•	•	•	•	•	•	•	B-1	34



AT 39069

Figure B-1. Generator Assembly — Exploded View.

Section III. SPECIAL TOOLS, TEST AND SUPPORT EQUIPMENT

None applicable for this item.

Section IV. FEDERAL STOCK NUMBER AND REFERENCE NUMBER INDEX

Federal stock number cross reference to figure and item number

Stock Number	Figure No.	Item No.	Stock Number	Figure No.	Item No.
2920-569-9901	NI	NI	5305-989-6265	B-1	33
2920-737-4739	B1	4	5305-985-3442	B-1	1
2920-737-4855	B-1	23	5305-985-3444	B-1	14
2920-737-4858	B-1	17	5310-282-8865	B-1	15
2920-737-4860	B-1	16	5310-559-0070	B-1	24
2920-737-4886	B-1	6	5310-576-5752	B-1	3
2920-900-7905	B-1	20	5310-808-5898	B-1	27
2920-903-0582	NI	NI	5310-902-9369	B-1	28
2920-903-1137	B-1	11	5315-616-5526	B-1	26
2920-902-9534	B-1		5330-265-1077	B-1	21
2920-946-8346	B-1	32	5330-599-2181	B-1	22
2920-999-5281	B-1	13	5330-741-2437	B-1	5
5305-270-7323	B-1	7	5340-737-4857	B-1	29
5305-614-0247	B-1	2	5360-734-7573	B-1	34
5305-984-6192	B-1	31	5977-284-9404	B-1	8
5305-984-6193	B-1	25	5999-254-5669	B-1	30

Reference number cross reference to manufacturer's code, figure number, and item number

Reference No.	Mfg code	Fig. No.	Item No.	Reference No.	Mfg code	Fig. No.	Item No.
GHA1052	19728	B-1	4	10950810	19207	B-1	13
GHA2061AS-1	19278	B-1	12	10950812	19207	B-1	32
GHS23	19278	B-1	10	10950813	19207	B-1	19
MS21083-N8	96906	B1	28	10950814	19207	B-1	9
MS27183-18	96906	B-1	27	10950815	19207	B-1	14
MS29513-220	96906	B-1	21	5703308	19207	NI	
MS35206-244	96906	B-1	31	7374852	19207	B-1	4
MS35206-245	96906	B-1	25	7374855	19207	B-1	23
MS35207-262	96906	B-1	33	7374857	19207	B-1	29
MS35207-266	96906	B-1	14	7374858	19207	B-1	17
MS35207-268	96906	B-1	1	7374859	19207	B-1	15
MS25266-64	96906	B-1	2	7374860	19207	B-1	16
MS35333-38	96906	B-1	24	7374886	19207	B-1	6
MS35333-39	96906	B-1	3	7373328	19207	B-1	22
MS35756-8	96906	B-1	26	7375329	19207	NI	
10944625	19207	B-1	20	7412437	19207	B-1	5
10950799	19207	NI		8332226	19207	B-1	7
10950808	19207	B-1		874377	126013	B-1	30
10950809	19207	B-1	11				

By Order of the Secretary of the Army:

W. C. WESTMORELAND,
General, United States Army,
Chief of Staff.

Official:

VERNE L. BOWERS,
Major General, United States Army,
The Adjutant General

Distribution:

To be distributed in accordance with DA Form 12-38, two (2) copies to each account.

