

SECTION II

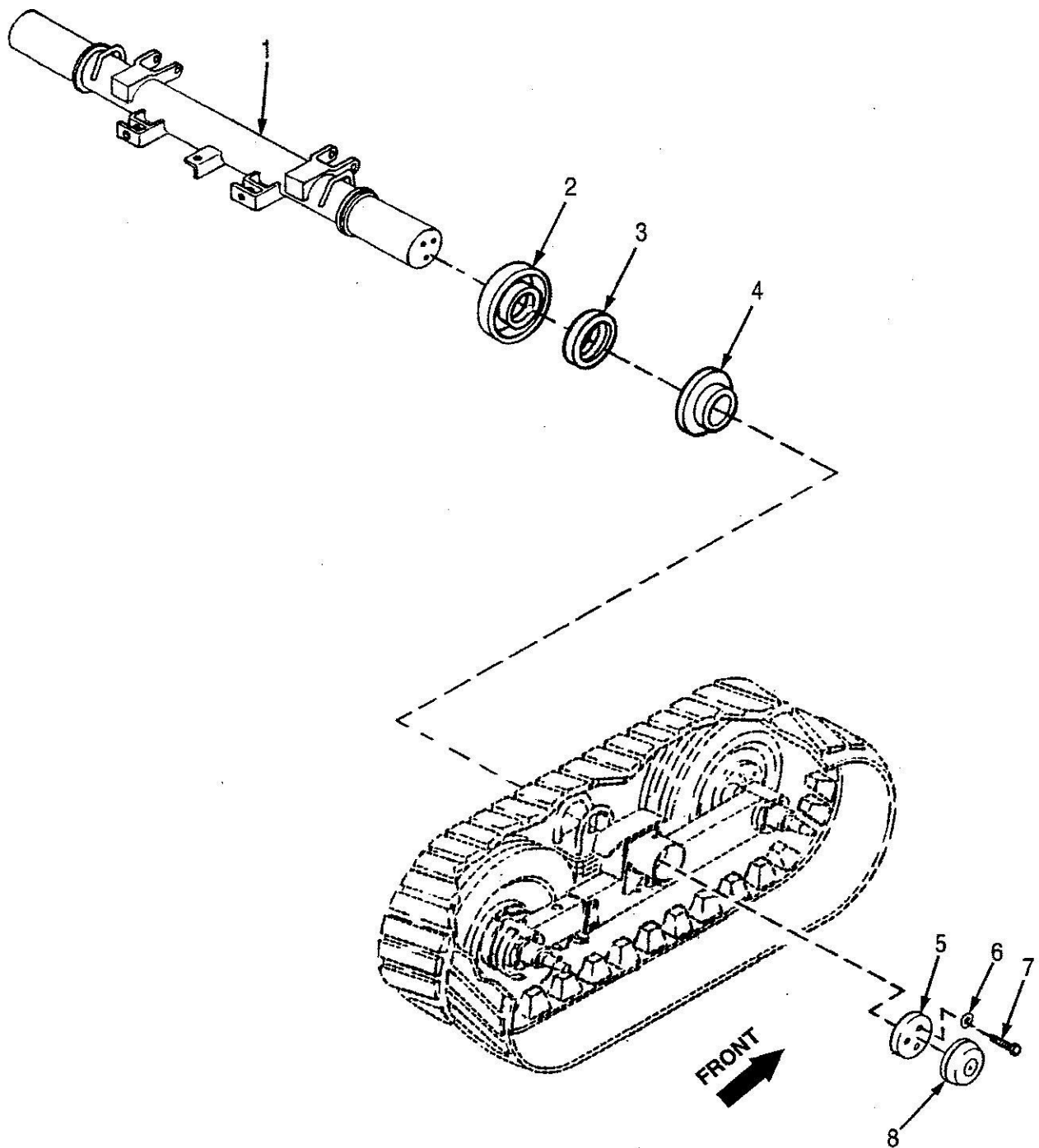


Figure 1. Cross Axle Group

SECTION II

(1) ITEM NO.	(2) SMR CODE	(3) CAGE CODE	(4) PART NUMBER	(5) DESCRIPTION AND USABLE ON CODE (UOC)	(6) QTY
				GROUP 11 REAR AXLE	
				GROUP 1100 REAR AXLE ASSEMBLY	
				FIG. 1 CROSS AXLE GROUP	
1			121-7376	AXLE ASSEMBLY	1
2			121-4343	HOUSING SEAL	2
3			1R1056	SEAL, PLAIN	2
4			121-4341	PLATE THRUST	2
5			121-4350	RETAINER	2
6			8T4122	WASHER, FLAT	6
7			7X0345	BOLT, MACHINE	6
8			121-4347	CAP	2
				END OF FIGURE	

SECTION II

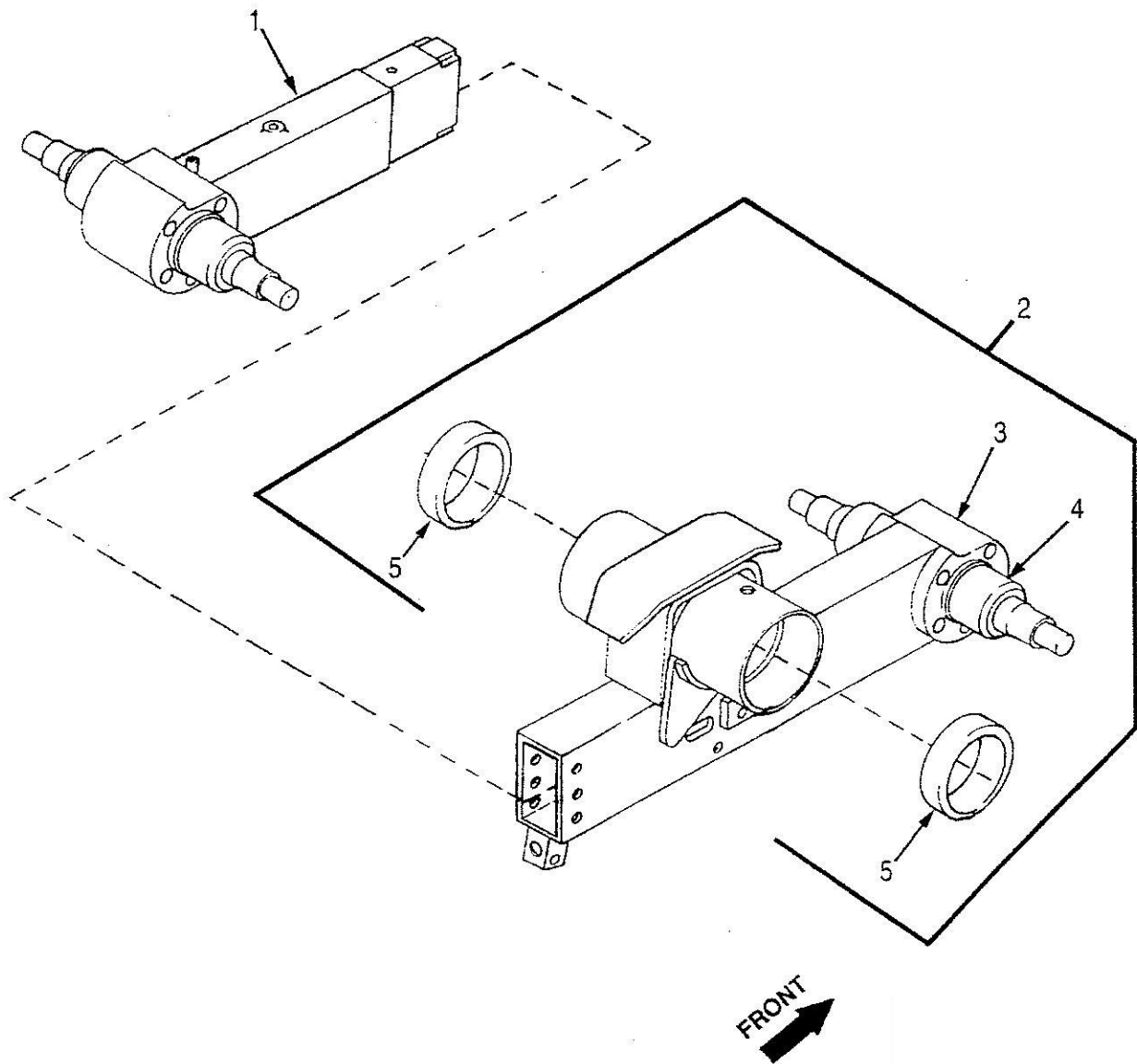


Figure 2. Walking Beam

SECTION II

(1) ITEM NO.	(2) SMR CODE	(3) CAGE CODE	(4) PART NUMBER	(5) DESCRIPTION AND USABLE ON CODE (UOC)	(6) QTY
				GROUP 1108 WALKING BEAM, STUB AXLES AND PARTS	
				FIG. 2 WALKING BEAM	
1			4R9770	FRAME ASSEMBLY REAR WALKING BEAM	2
2			121-7379	FRAME ASSEMBLY FRONT WALKING BEAM	2
3			121-7380	• TUBE	1
4			4R9787	• SPINDLE	1
5			1P8336	• BEARING	2
				END OF FIGURE	

SECTION II

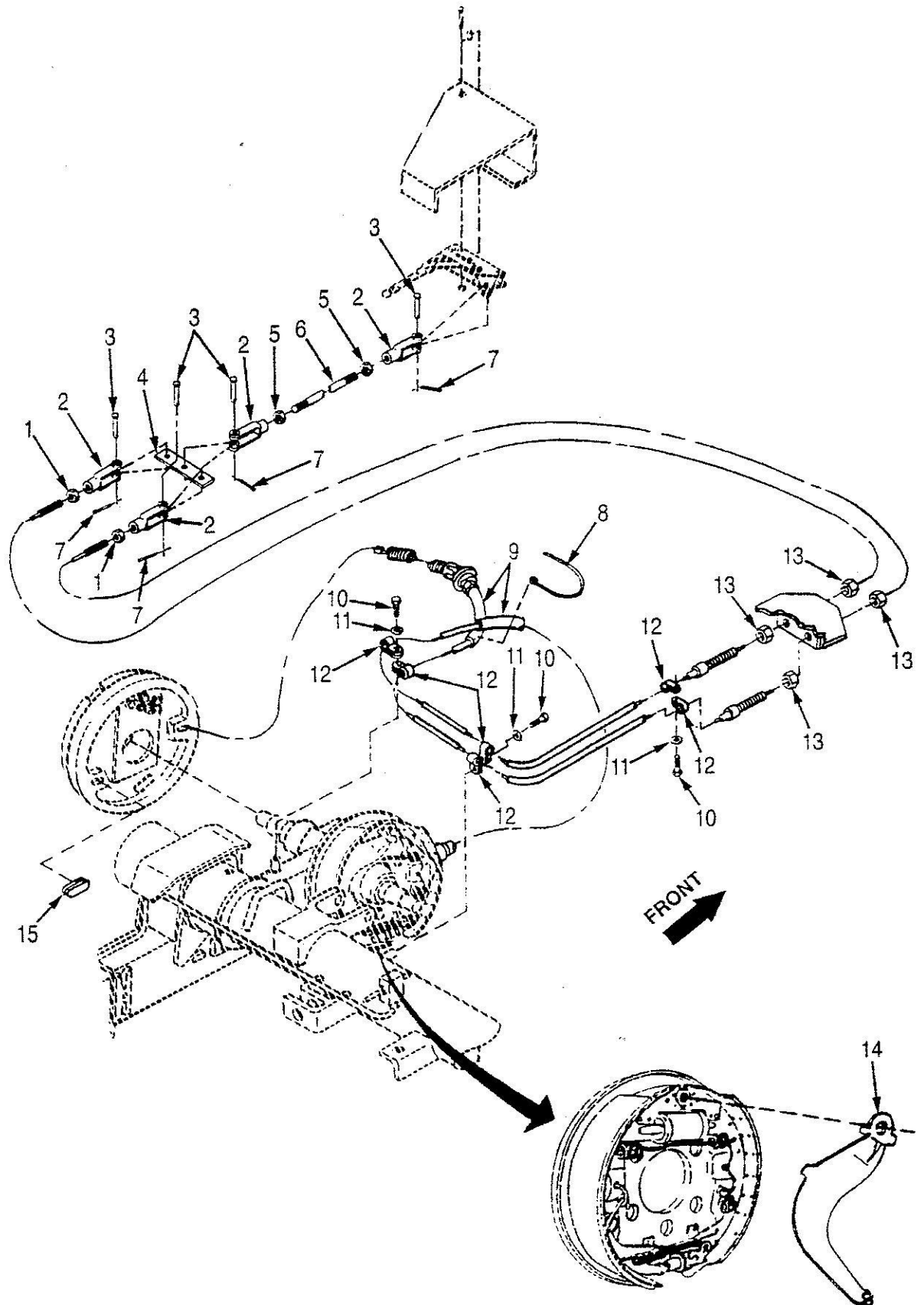


Figure 3. Handbrake Cable and Linkage

SECTION II

(1) ITEM NO.	(2) SMR CODE	(3) CAGE CODE	(4) PART NUMBER	(5) DESCRIPTION AND USABLE ON CODE (UOC)	(6) QTY
				GROUP 12 BRAKES	
				GROUP 1201 HANDBRAKES	
				FIG. 3 HANDBRAKES CABLE AND LINKAGE	
1			MS51968-8	NUT, PLAIN, HX PART OF P/N 15710000	4
2			MS35812-4	CLEVIS, ROD END	8
3			1B0676	PIN, STRAIGHT, HEADED	8
4			7N668	CLAMP, FUEL LINE	2
5			9L7712	NUT, PLAIN, HX	4
6			5H5211	ROD	2
7			MS24665-319	PIN, COTTER	8
8			9X7208	STRAP, CABLE, IDENT	2
9			15710000	CABLE ASSEMBLY	4
10			5M3062	BOLT, MACHINE	6
11			8T4896	WASHER FLAT	6
12			5P9297	CLAMP, LOOP	12
13			84002465	NUT, PLAIN, HX	8
14			3204270	LEVER, PARKING BRAKE RIGHT	2
14			3204269	LEVER, PARKING BRAKE LEFT	2
15			324020	COVER ADJUSTING HOL	12
				END OF FIGURE	

SECTION II

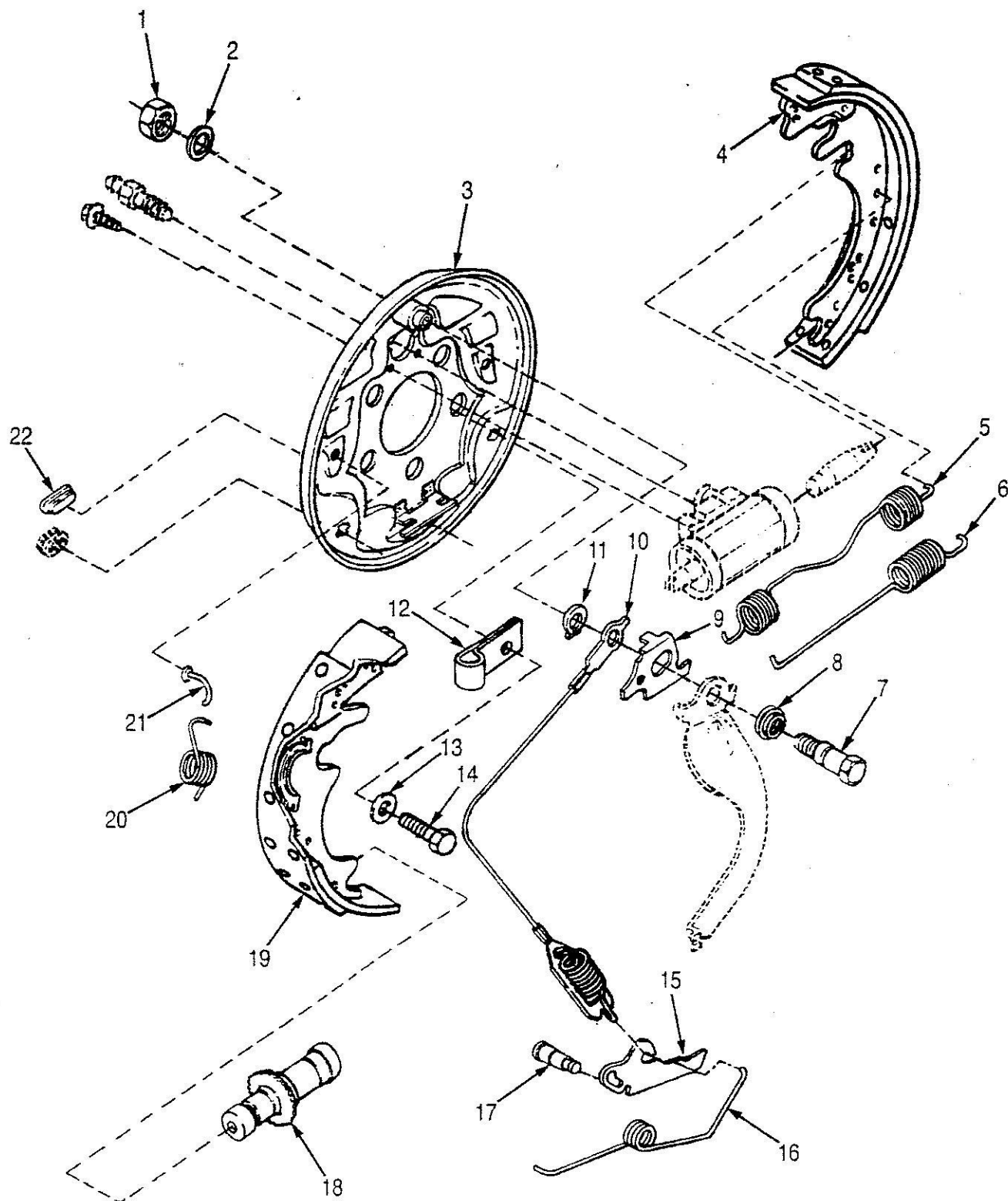


Figure 4. Inner and Outer Brake Groups

SECTION II

(1) ITEM NO.	(2) SMR CODE	(3) CAGE CODE	(4) PART NUMBER	(5) DESCRIPTION AND USABLE ON CODE (UOC)	(6) QTY
				GROUP 1202 SERVICE BRAKES	
				FIG. 4 INNER AND OUTER BRAKE GROUPS	
1			901629	NUT	8
2			901011	WASHER SPRING	8
3			4151411	BACKING PLATE ASSEMBLY	8
4			4151867	SHOE & LINING RH RIGHT HAND PART OF KIT P/N 4151872	8
5			322485	SPRING SHOE TO SHOE	8
6			322486	SPRING SHOE TO SHOE	8
7			4151413	BOLT ANCHOR	8
8			317939	SPRING	8
9			3208660	CAM PLATE PKG BK LV RIGHT HAND	4
9			3208659	CAM PLATE PKG BK LV LEFT HAND	4
10			317913	CABLE & FITTING	8
11			4151840	RETAINER	8
12			5P7808	CLAMP, LOOP	4
13			8T4994	WASHER, FLAT	40
14			7X0368	BOLT, MACHINE	40
15			3205204	LEVER, REMOTE CONTROL LEFT HAND	4
15			3205205	LEVER, REMOTE CONTROL RIGHT HAND	4
16			322314	SPRING, LEFT	4
16			4383274	SPRING, RIGHT	4
17			318223	PIN, ADJUSTING LEVER	8
18			317902	NUT, ADJUSTING LEFT HAND	4
18			317903	NUT, ADJUSTING RIGHT HAND	4
19			4151866	SHOE & LINING SEC LEFT HAND PART OF KIT P/N 4151872	8
20			317925	SHOE, HOLD DOWN LEFT HAND	4
20			317926	SHOE, HOLD DOWN RIGHT HAND	4
21			318510	PIN, SHOE HOLD DOWN	8
22			3492669	CAP-PLUG, PROTECTIVE	8
				END OF FIGURE	

SECTION II

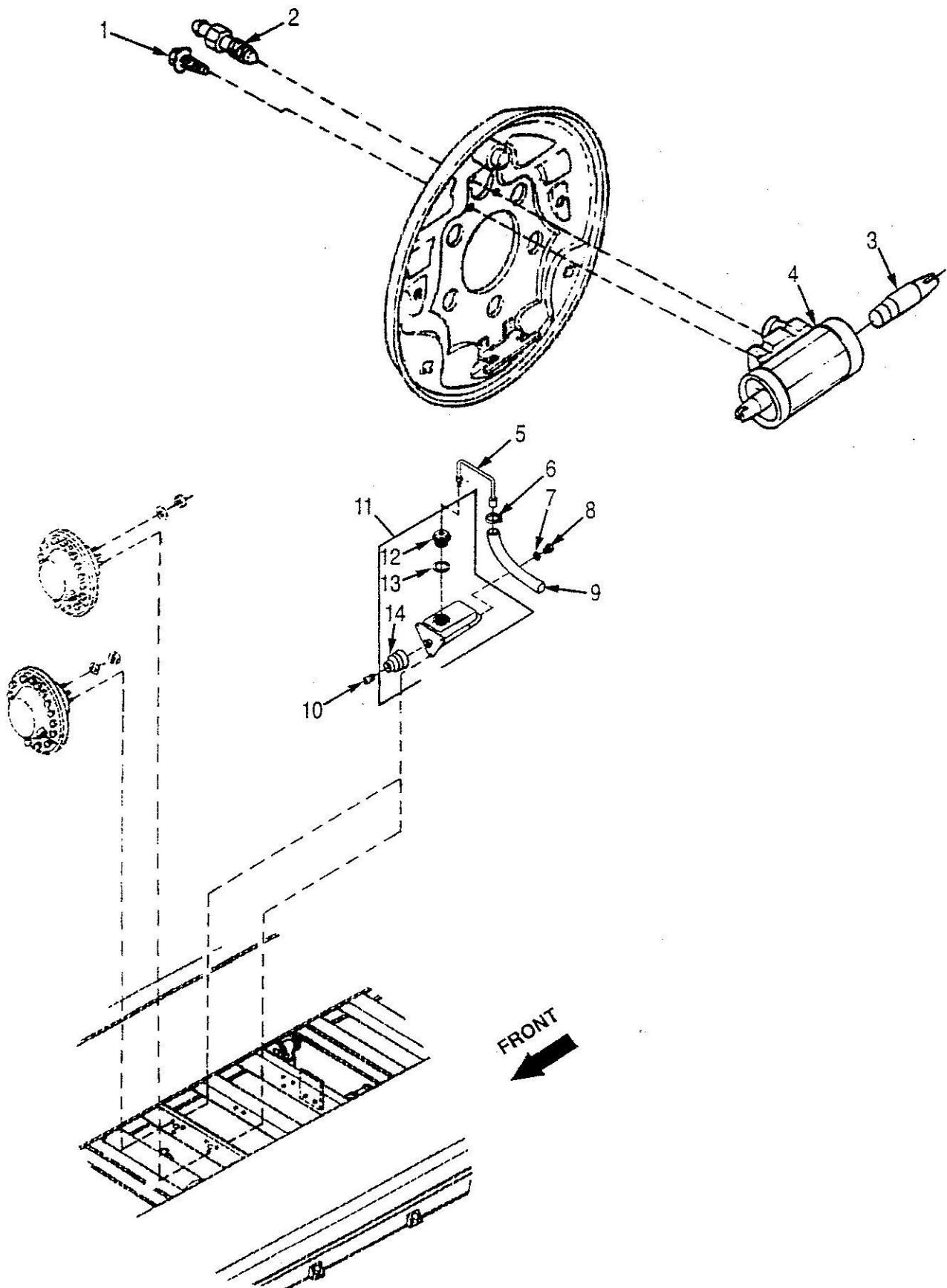


Figure 5. Master Cylinder and Wheel Cylinder Assemblies

SECTION II

(1) ITEM NO.	(2) SMR CODE	(3) CAGE CODE	(4) PART NUMBER	(5) DESCRIPTION AND USABLE ON CODE (UOC)	(6) QTY
				GROUP 1204 HYDRAULIC BRAKE SYSTEM	
				FIG. 5 MASTER CYLINDER AND WHEEL CYLINDER ASSEMBLIES	
1			2501253	LOCK, BOLT PIN	16
2			302861	SCREW BLEEDER PART OF P/N 4151407	8
3			47865	LINK, WHEEL CYLINDER	16
4			4151407	ASSEMBLY, WHEEL CYLI RIGHT	4
4			4151406	ASSEMBLY, WHEEL CYLI LEFT	4
5			N12988	TUBE ASSEMBLY, METAL	2
6			11608950-6	CLAMP, HOSE	2
7			5156636	GASKET	2
8			8365390	REDUCER, TUBE	2
9			MS521301A204R	HOSE, NON-METALLIC	2
10			8365427	COLLAR, AIR CHAMBER	2
11			FE14240	CYLINDER, ASSEMBLY	2
12			7979691	• CAP, FILLER OPENING	1
13			12301182-2	• GASKET	1
14			7979699	• BOOT, DUST AND MOIST	1
				END OF FIGURE	

SECTION II

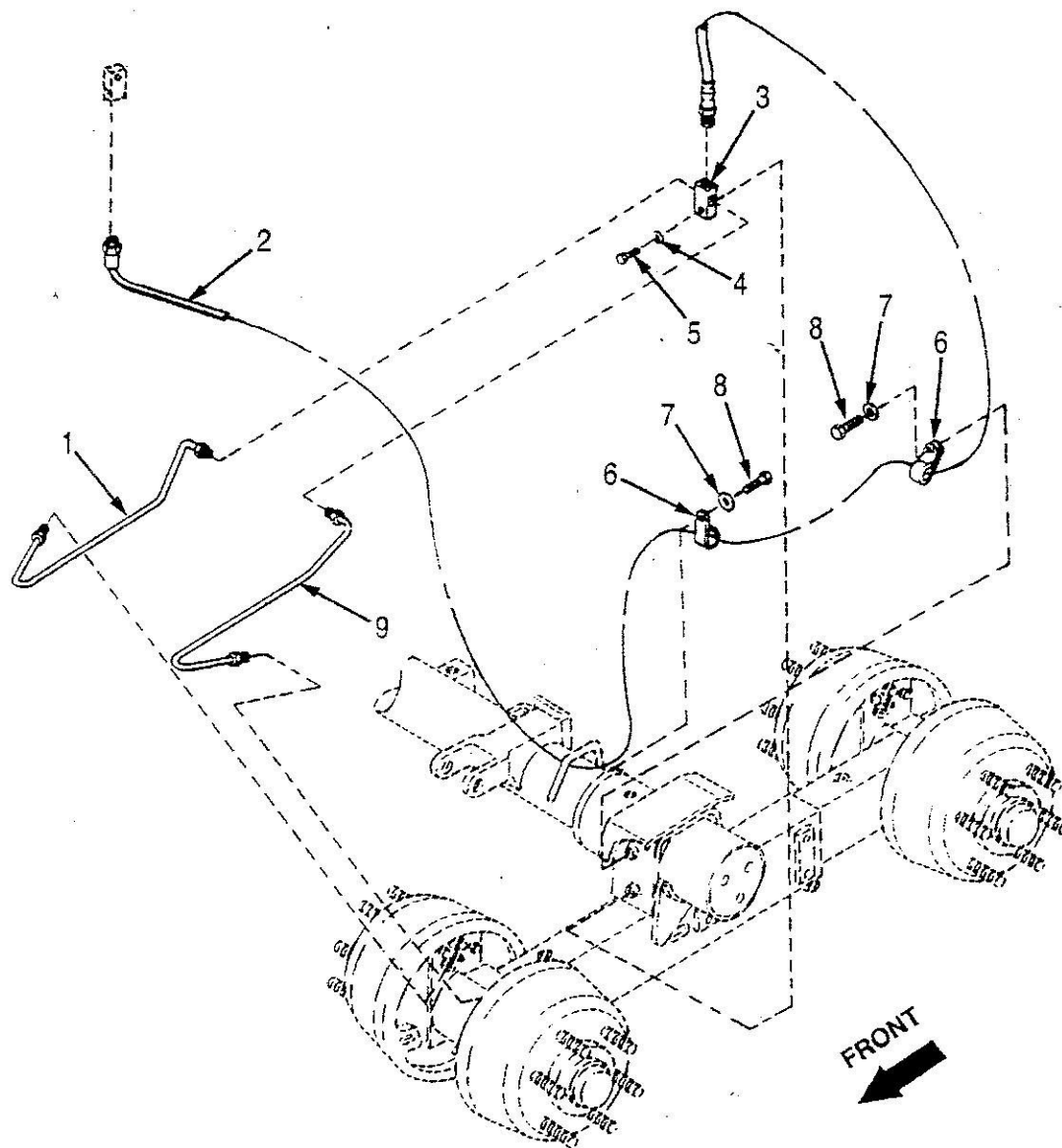


Figure 6. Front Walking Beam Brake Lines, Hoses, and Fittings

SECTION II

(1) ITEM NO.	(2) SMR CODE	(3) CAGE CODE	(4) PART NUMBER	(5) DESCRIPTION AND USABLE ON CODE (UOC)	(6) QTY
				FIG. 6 FRONT WALKING BEAM BRAKE LINES, HOSES AND FITTINGS	
1			4R9797	TUBE ASSEMBLY RIGHT HAND	2
2			122-1620	HOSE ASSEMBLY	2
3			7708	CONNECTOR, MULTIPLE	2
4			8T4224	WASHER, FLAT	2
5			4M6425	BOLT, MACHINE	2
6			140583	CLAMP, LOOP	4
7			8T4896	WASHER, FLAT	4
8			5M3062	BOLT, MACHINE	4
9			4R9796	TUBE ASSEMBLY LEFT HAND	2
				END OF FIGURE	

SECTION II

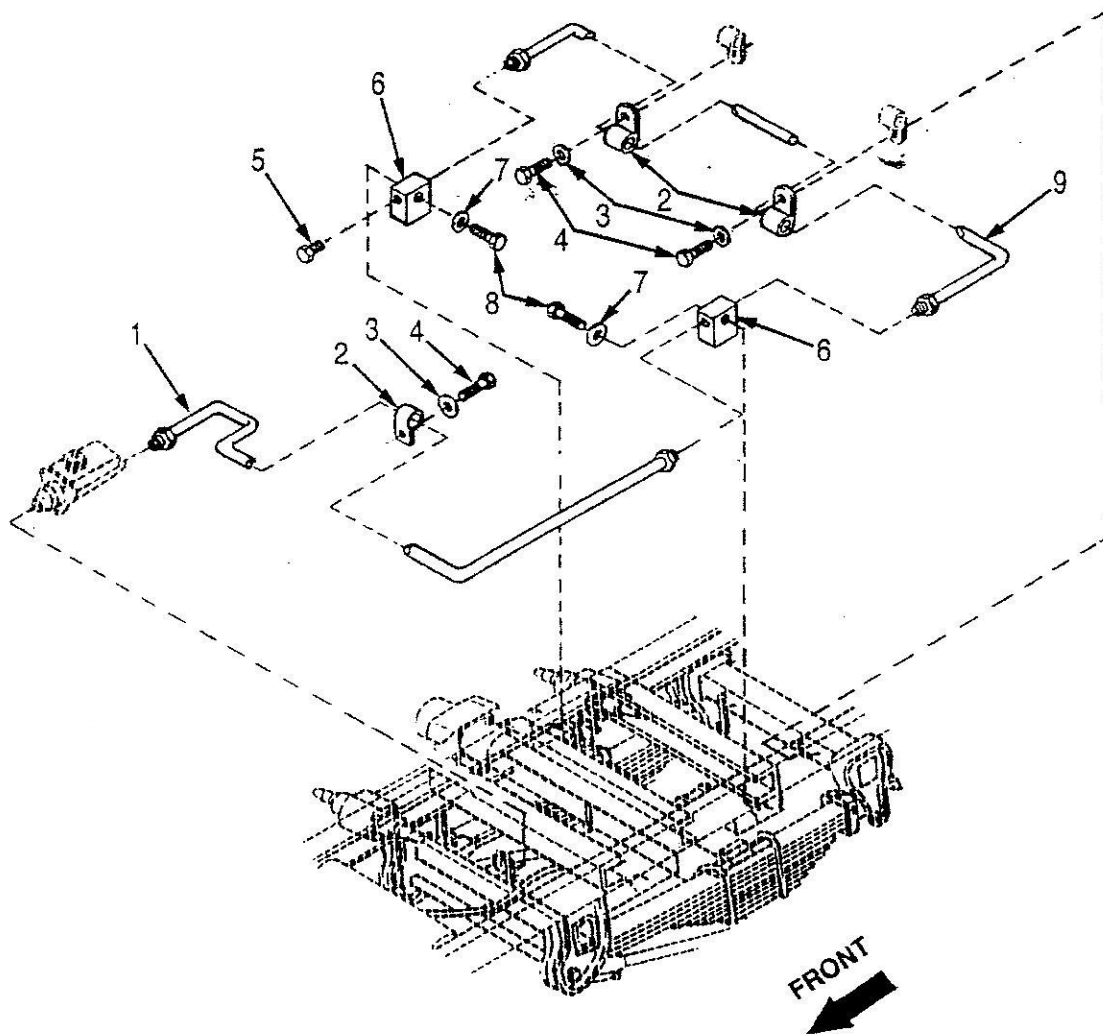


Figure 7. Front Frame Brake Lines, Hoses, and Fittings

SECTION II

(1) ITEM NO.	(2) SMR CODE	(3) CAGE CODE	(4) PART NUMBER	(5) DESCRIPTION AND USABLE ON CODE (UOC)	(6) QTY
				GROUP 1204 HYDRAULIC BRAKE SYSTEM	
				FIG. 7 FRONT FRAME LINES, HOSES AND FITTINGS	
1			4R9837	TUBE ASSEMBLY	1
2			4H8878	CLAMP, LOOP	3
3			8T4896	WASHER, FLAT	3
4			5M3062	BOLT, MACHINE	3
5			9L8492	PLUG, TUBE FITTING	1
6			4R9882	TEE	2
7			8T4224	WASHER, FLAT	2
8			4M6425	BOLT, MACHINE	2
9			4R9879	TUBE ASSEMBLY	1
				END OF FIGURE	

SECTION II

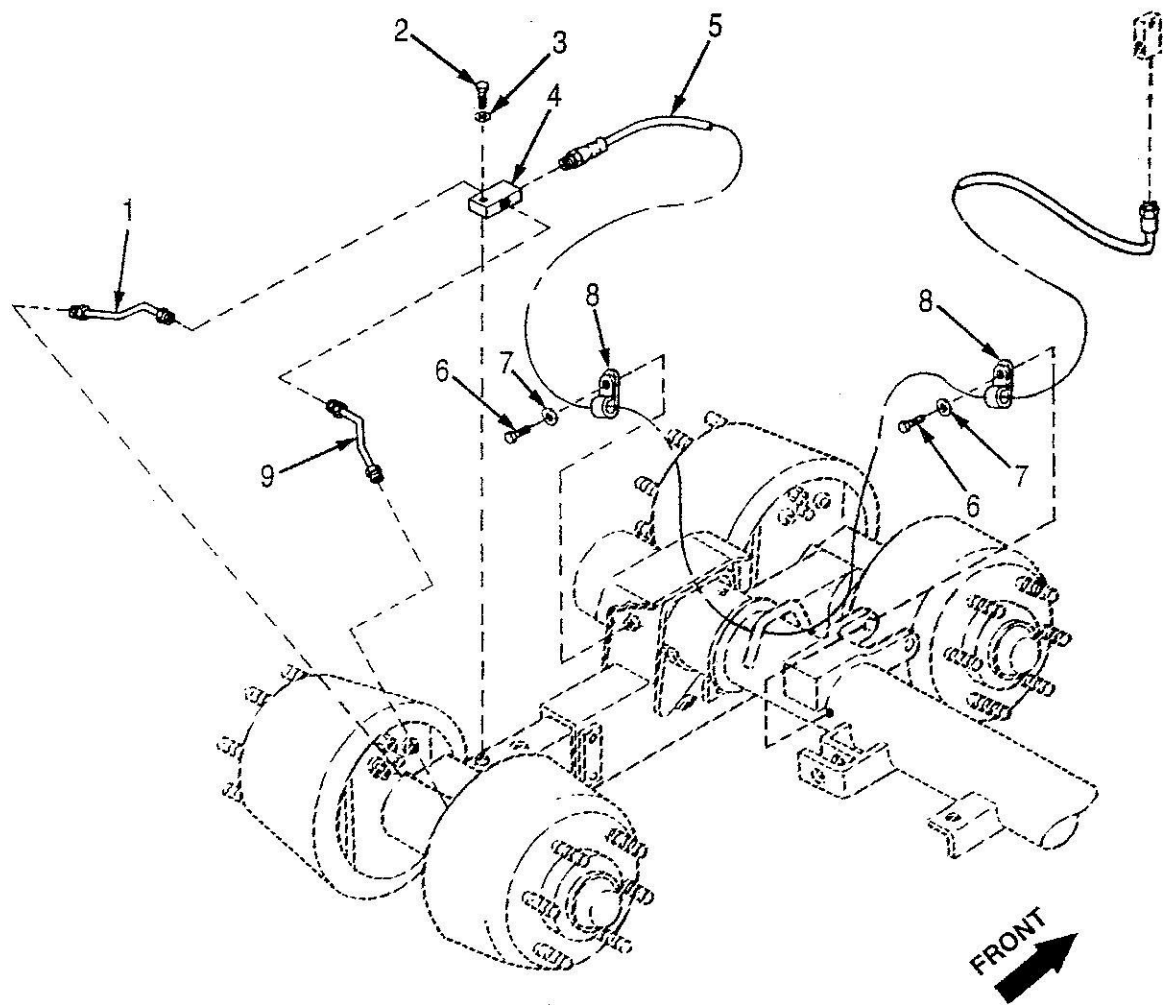


Figure 8. Rear Walking Beam Brake Lines

SECTION II

(1) ITEM NO.	(2) SMR CODE	(3) CAGE CODE	(4) PART NUMBER	(5) DESCRIPTION AND USABLE ON CODE (UOC)	(6) QTY
				GROUP 1204 HYDRAULIC BRAKE SYSTEM	
				FIG. 8 REAR WALKING BEAM BRAKE LINES	
1			4R9800	TUBE ASSEMBLY RIGHT HAND	2
2			4M6425	BOLT MACHINE	2
3			8T4224	WASHER, FLAT	2
4			7708	CONNECTOR, MULTIPLE	2
5			122-1620	HOSE ASSEMBLY	2
6			5M3062	BOLT, MACHINE	4
7			8T4896	WASHER, FLAT	4
8			140583	CLAMP, LOOP	4
9			4R9799	TUBE ASSEMBLY LEFT HAND	2
				END OF FIGURE	

SECTION II

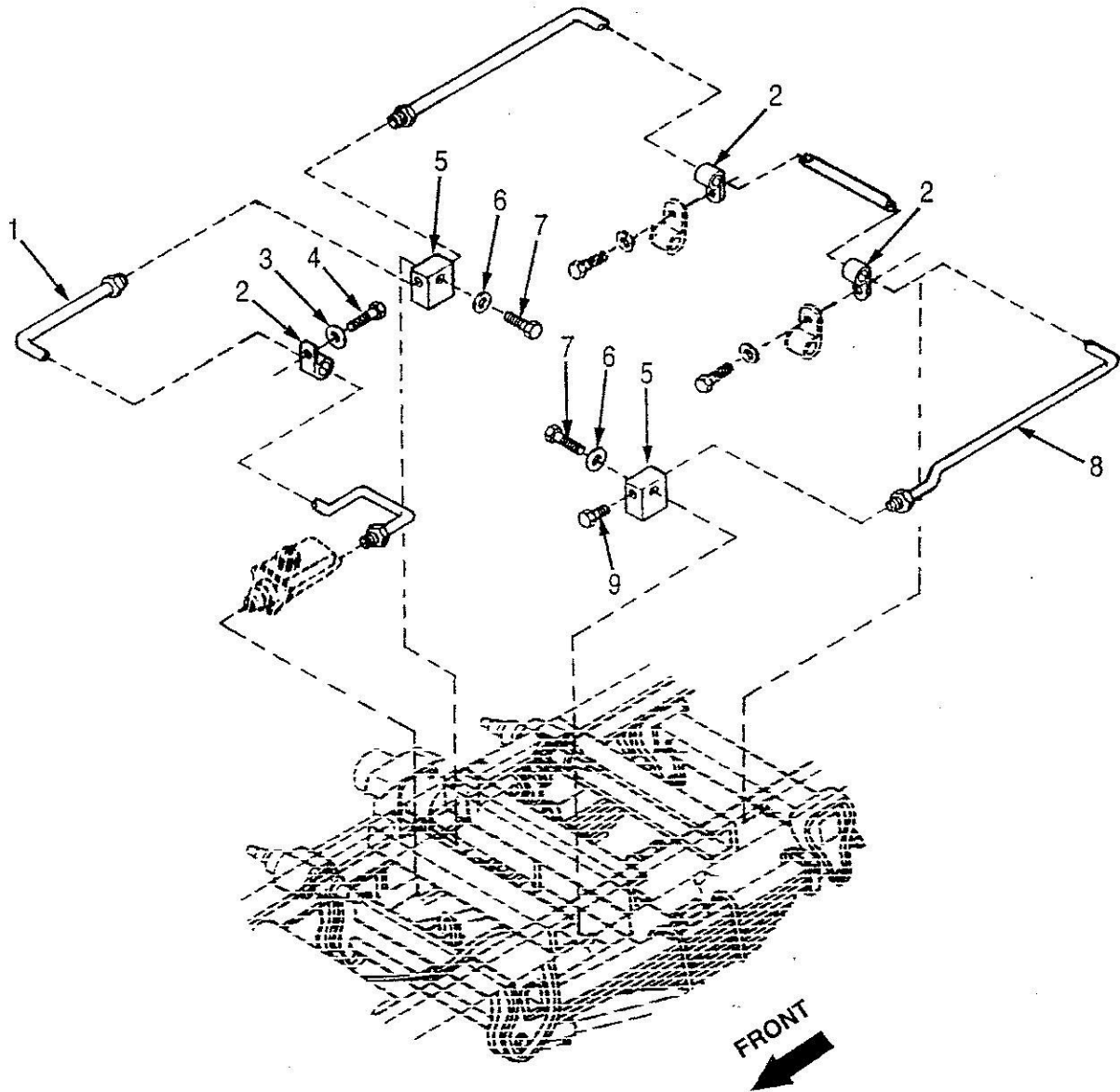


Figure 9. Rear Frame Brake Lines, Hoses, and Fittings

SECTION II

(1) ITEM NO.	(2) SMR CODE	(3) CAGE CODE	(4) PART NUMBER	(5) DESCRIPTION AND USABLE ON CODE (UOC)	(6) QTY
				GROUP 1204 HYDRAULIC BRAKE SYSTEM	
				FIG. 9 REAR FRAME BRAKE LINES, HOSES AND FITTINGS	
1			4R9877	TUBE ASSEMBLY	1
2			4H8878	CLAMP, LOOP	3
3			8T4896	WASHER, FLAT	1
4			5M3062	BOLT, MACHINE	1
5			4R9882	TEE	2
6			8T4224	WASHER, FLAT	2
7			4M6425	BOLT, MACHINE	2
8			4R9878	TUBE ASSEMBLY	1
9			9L8492	PLUG, TUBE FITTING, T	1
				END OF FIGURE	

SECTION II

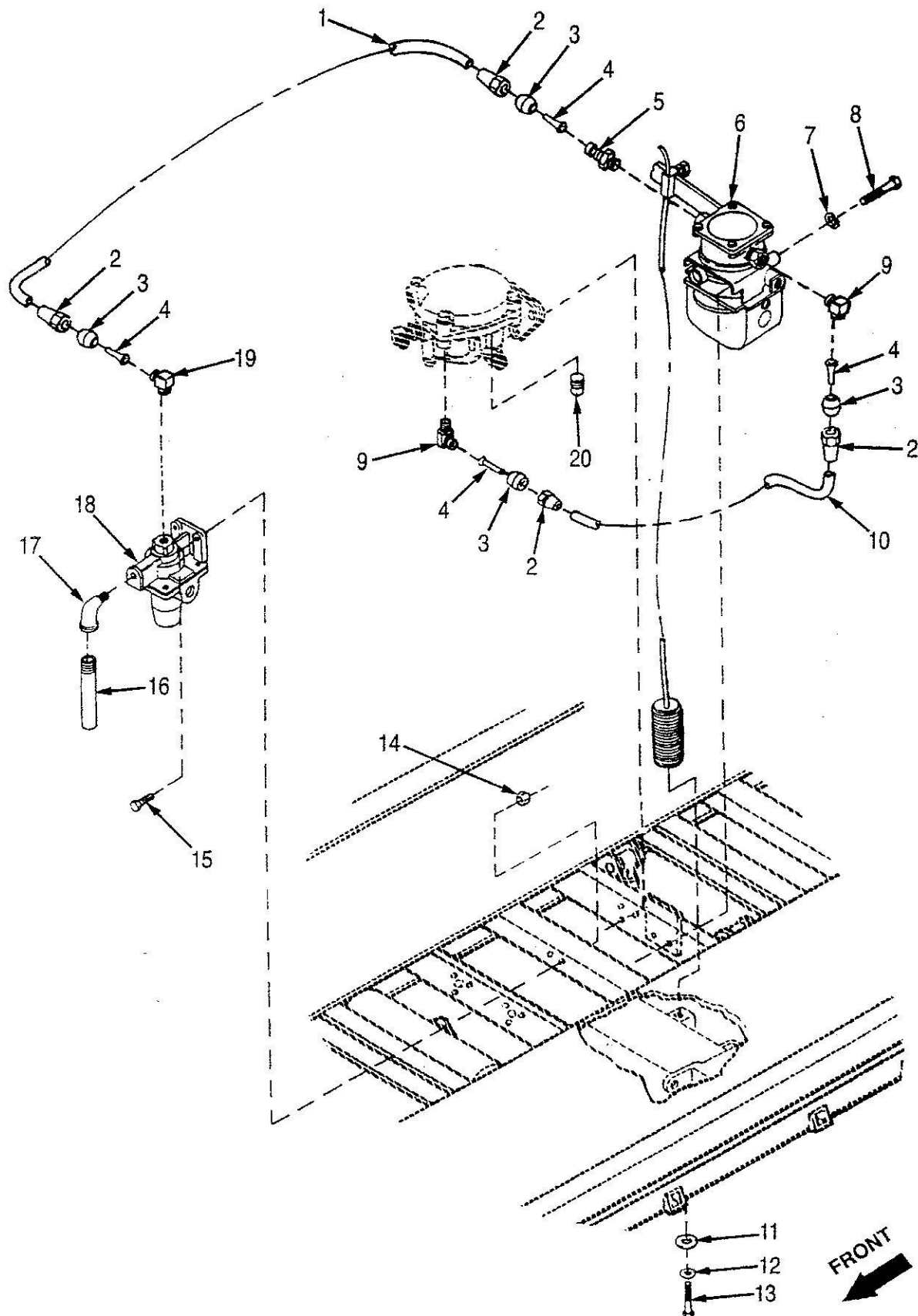


Figure 10. Load Sensing and Halfway Brake Valve Assemblies, Hoses and Fittings

SECTION II

(1) ITEM NO.	(2) SMR CODE	(3) CAGE CODE	(4) PART NUMBER	(5) DESCRIPTION AND USABLE ON CODE (UOC)	(6) QTY
				GROUP 1208 AIR BRAKE SYSTEM	
				FIG. 10 LOAD SENSING AND HALFWAY BRAKE VALVE ASSEMBLIES, HOSES AND FITTINGS	
1			122-3796-52	HOSE NONMETALLIC, MAKE FROM HOSE NONMETALLIC P/N J844TYBSIZE3/8	1
2			120111B	NUT, TUBE COUPLING	4
3			120111B	NUT, TUBE COUPLING	4
4			CPR102321-1	INSERT, TUBE FITTING	4
5			6-4 120102BA	ADAPTER, STRAIGHT	1
6			N-50016-A	SENSOR, ANTI-LOCK BR LOAD SENSING BRAKE VALVE	1
7			8T4224	WASHER, FLAT	2
8			7X0276	BOLT	2
9			6-4 120202BA	ELBOW	2
10			122-3796-21	HOSE, NONMETALLIC MAKE FROM HOSE NONMETALLIC P/N J844TYBSIZE3/8	1
11			A51B21644-17	WASHER, FLAT	1
12			MS35338-47	WASHER, LOCK PART OF P/N N-50016-A	1
13			DIN933 M10X1.5X20-8.8	SCREW, CAP, HX PART OF P/N N-50016-A	1
14			206235	NUT, SELF LOCKING	2
15			B1821BH025C100N	SCREW, CAP, HX	2
16			3B7273	NIPPLE PIPE	1
17			8365771	ELBOW, PIPE	1
18			229505	VALVE, BRAKE PNEUMATIC HALFWAY BRAKE VALVE	1
19			6-6 120202BA	ELBOW, PIPE TO TUBE	1
20			5M6213	PLUG, PIPE	3
				END OF FIGURE	

SECTION II

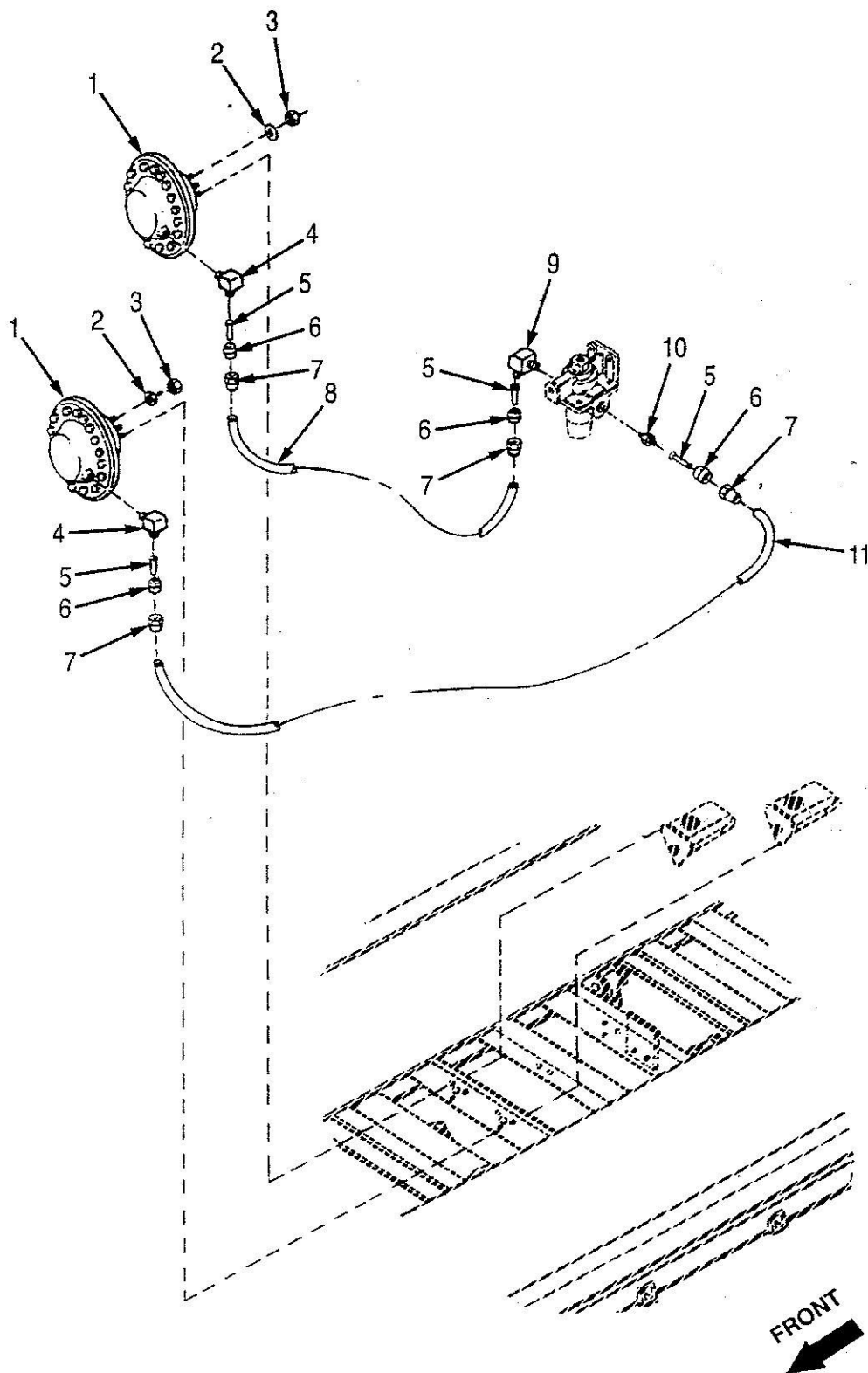


Figure 11. Air Chamber Assembly, Hoses and Fittings

SECTION II

(1) ITEM NO.	(2) SMR CODE	(3) CAGE CODE	(4) PART NUMBER	(5) DESCRIPTION AND USABLE ON CODE (UOC)	(6) QTY
				GROUP 1208 AIR BRAKE SYSTEM	
				FIG. 11 AIR CHAMBER ASSEMBLY, HOSES AND FITTINGS	
1			GN20069	CHAMBER ASSEMBLY	2
2			MS35338-46	WASHER, LOCK PART OF P/N GN20069	6
3			MS51967-8	NUT, PLAIN HX	6
4			6-4 120202BA	ELBOW	2
5			6 120111B	NUT, TUBE COUPLING	4
6			CPR102321-1	INSERT, TUBE FITTING	4
7			4 120111B	NUT, TUBE, COUPLING	4
8			122-3796-26	HOSE, NONMETALLIC MAKE FROM HOSE NONMETALLIC P/N J844TYBSIZE3/8	1
9			6-6 120202BA	ELBOW, PIPE TO TUBE	1
10			6-6 120102BA	ADAPTER, STRAIGHT PIPE	1
11			122-3796-27	HOSE, NONMETALLIC MAKE FROM HOSE NONMETALLIC P/N J844TYBSIZE3/8	1
				END OF FIGURE	

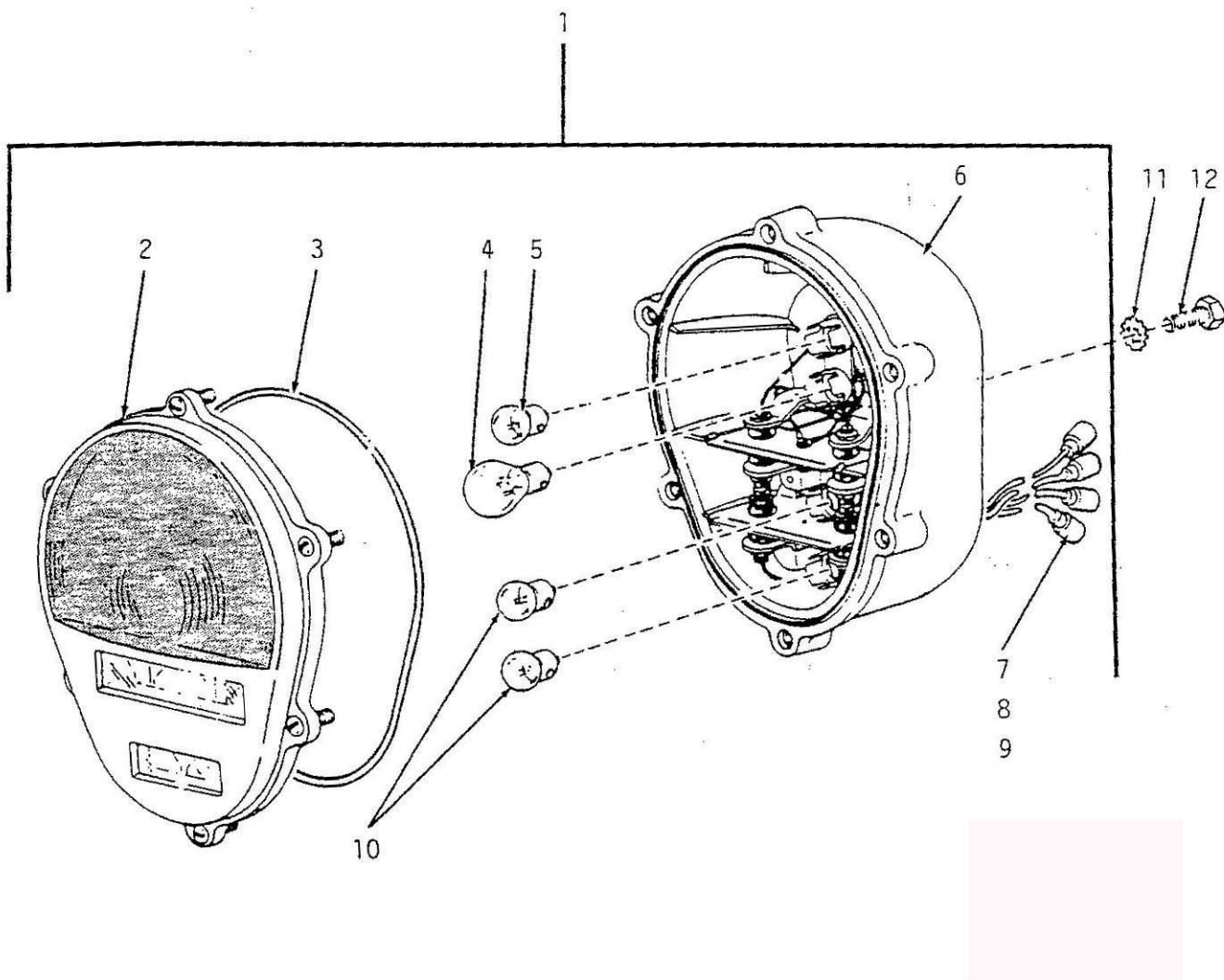


Figure 12. Composite Light

SECTION II

(1) ITEM NO.	(2) SMR CODE	(3) CAGE CODE	(4) PART NUMBER	(5) DESCRIPTION AND USABLE ON CODE (UOC)	(6) QTY
				GROUP 06 ELECTRICAL SYSTEM	
				GROUP 0609 LIGHTS	
				FIG. 12 COMPOSITE LIGHT	
1			11614157	STOP LIGHT - TAILLIGHT	2
2			11639535	• LENS, LIGHT	1
3			11639519-2	• PACKING, PREFORMED	1
4			MS35478-1683	• LAMP, INCANDESCENT	1
5			MS15570-623	• LAMP, INCANDESCENT	1
6			116639520	• BODY ASSEMBLY	1
7			8338566	• SHELL, ELECTRICAL CO	4
8			8338567	• WASHER, SLOTTED	4
9			MS27148-2	• CONTACT, ELECTRICAL	4
10			MS15570-1250	• LAMP, INCANDESCENT	2
11			MS35338-46	WASHER, LOCK	4
12			MS90725-58	SCREW, CAP, HEXAGON H	4
				END OF FIGURE	

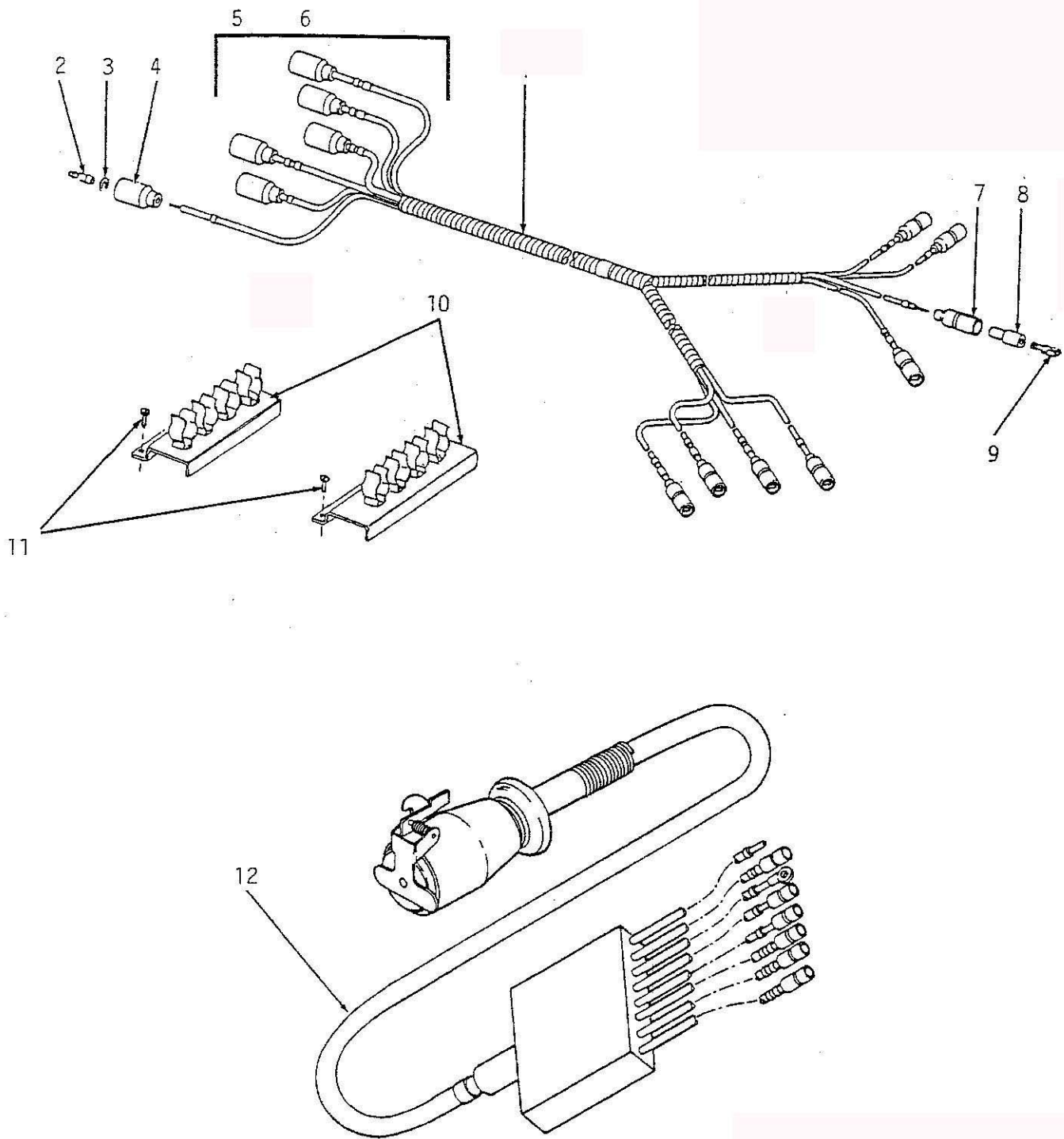


Figure 13. Wiring Harness

SECTION II

(1) ITEM NO.	(2) SMR CODE	(3) CAGE CODE	(4) PART NUMBER	(5) DESCRIPTION AND USABLE ON CODE (UOC)	(6) QTY
				GROUP 0613 CHASSIS WIREING HARNESS	
				FIG. 13 WIREING HARNESS	
1			EMD11907	WIREING HARNESS	1
2			MS27148-2	• CONTACT, ELECTRICAL	6
3			8338567	• WASHER, SLOTED	6
4			8338566	• SHELL, ELECTRICAL CO	6
5			EMD51431-5	WIRE	2
6			EMD51562-2	LOOM	1
7			8338561	SHELL, ELECTRICAL	8
8			8338562	INSULATOR, BUSHING	8
9			8338564	TERMINAL ASSEMBLY	2
10			8747908-1	CLIP ASSEMBLY	2
11			MS51851-85	SCREW, TAPPING, THREAD	4
12			10891263	CABLE ASSEMBLY, POWER	1
				END OF FIGURE	

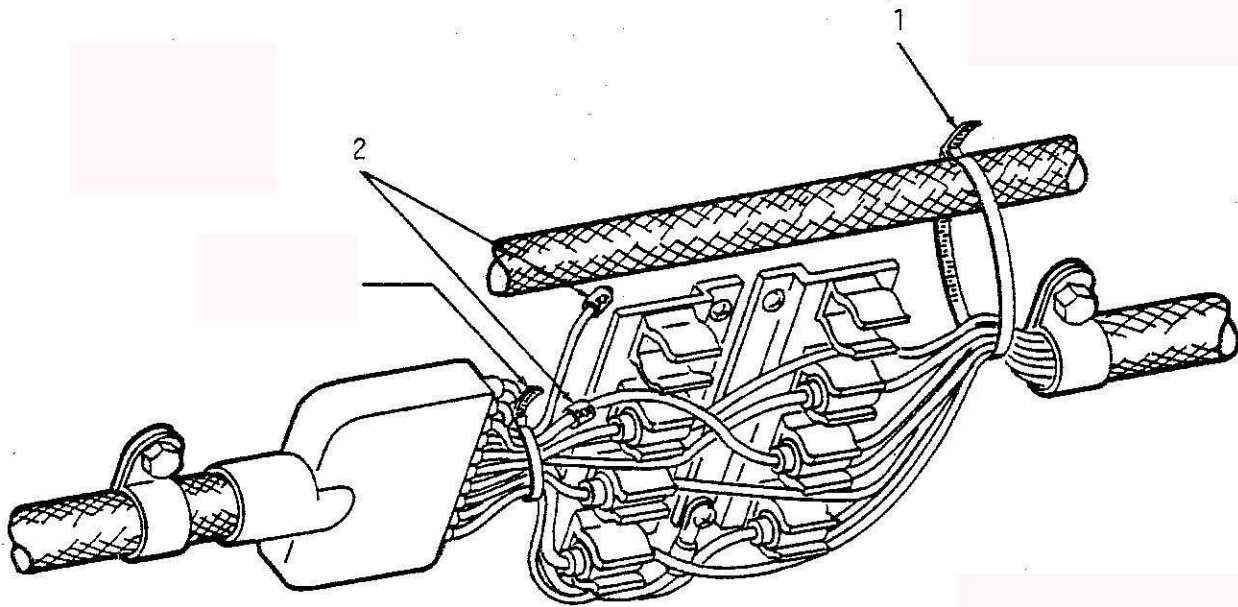


Figure 14. Wiring Harness Junction

SECTION II

(1) ITEM NO.	(2) SMR CODE	(3) CAGE CODE	(4) PART NUMBER	(5) DESCRIPTION AND USABLE ON CODE (UOC)	(6) QTY
1 2			MS3367-1-9 MS39020-1	<p>GROUP 0613 CHASSIS WIREING HARNESS</p> <p>FIG. 14 WIREING HARNESS JUNCTION</p> <p>STRAP, TIEDOWN, ELECT. BAND, MARKER</p> <p>END OF FIGURE</p>	2 20

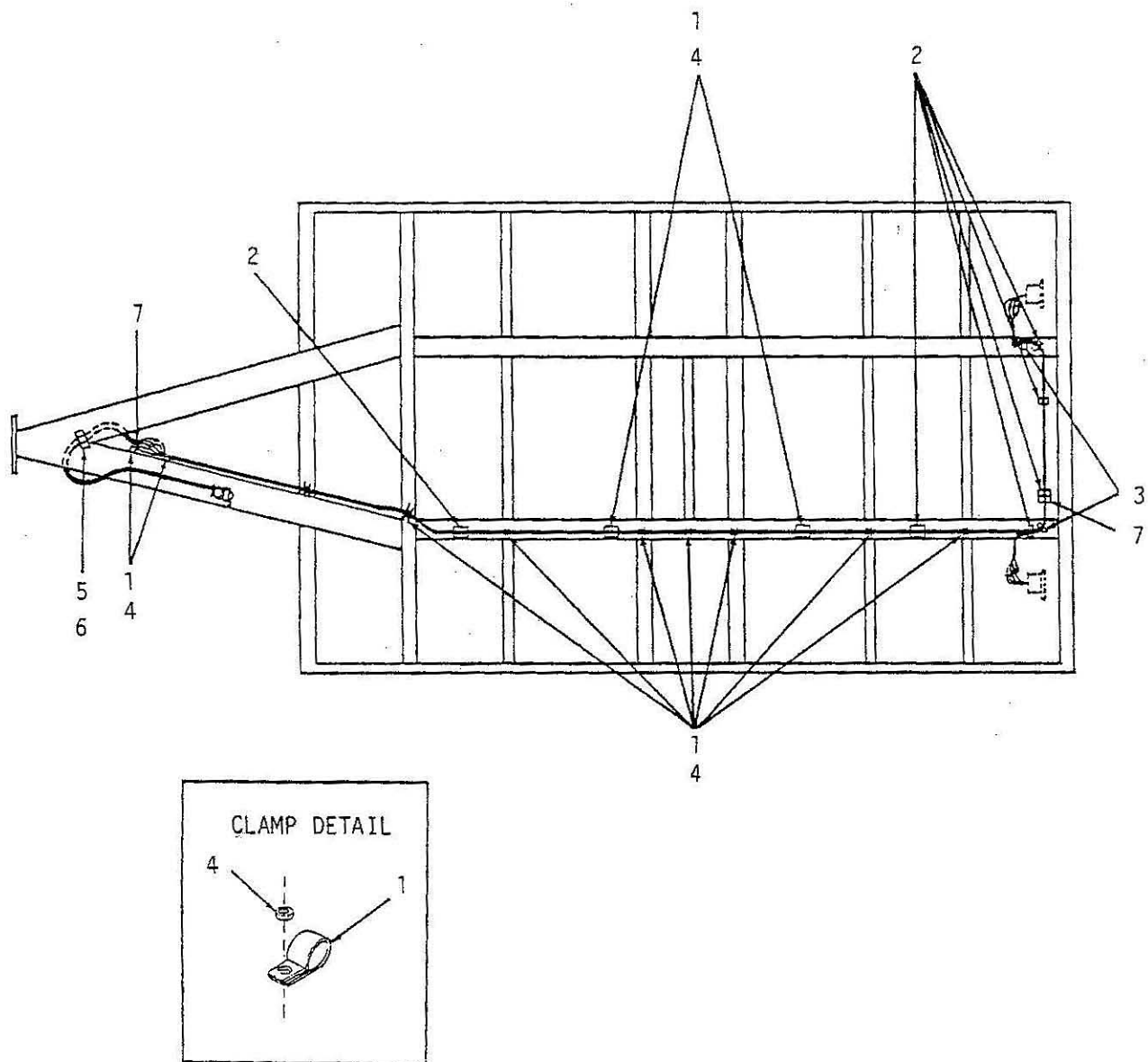


Figure 15. Wiring Harness Attaching Hardware

SECTION II

(1) ITEM NO.	(2) SMR CODE	(3) CAGE CODE	(4) PART NUMBER	(5) DESCRIPTION AND USABLE ON CODE (UOC)	(6) QTY
				GROUP 0613 CHASSIS WIRING HARNESS	
				FIG.15 WIREING HARNESS	
1			MS21333-75	CLAMP, LOOP	10
2			MS35489-78	GROMMET, NONMETALLIC	7
3			MS35489-107	GROMMET, NONMETALLIC	4
4			MS51922-1	NUT, SELF- LOCKING, HE	10
5			MS21333-77	CLAMP, LOOP	1
6			MS51851-64	SCREW, TAPPING, THREAD	1
7			MS90725-6	SCREW, CAP, HEXAGON H	2
				END OF FIGURE	

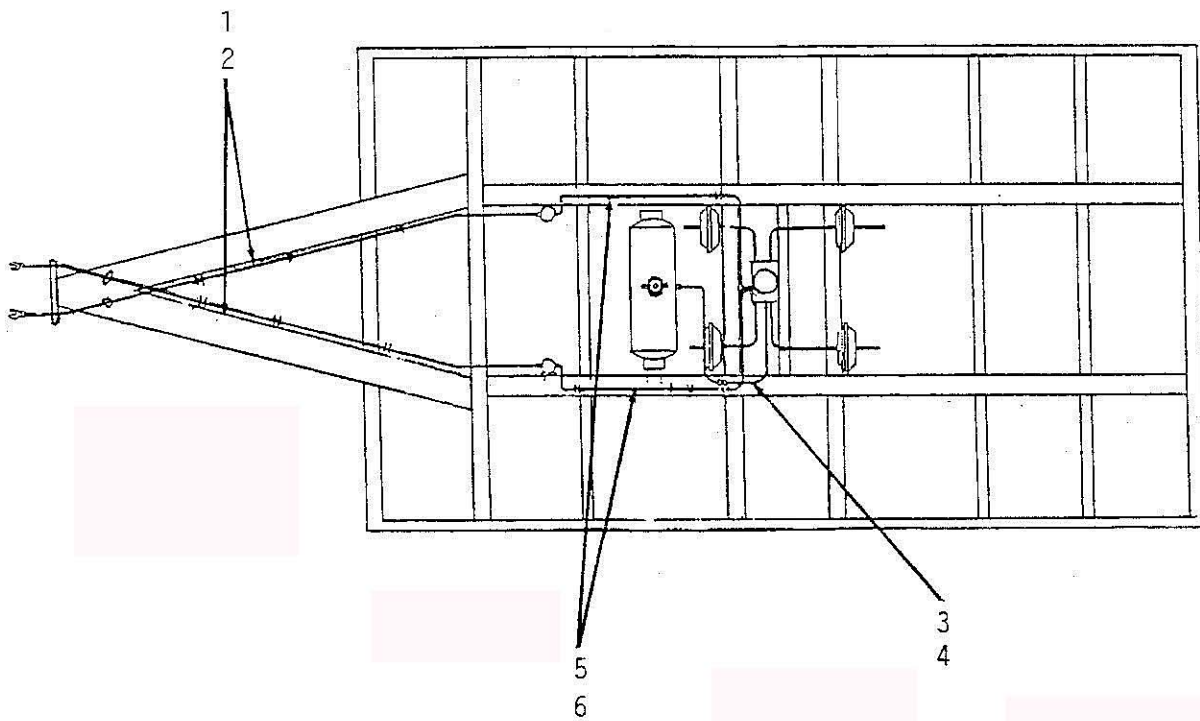


Figure 16. Air System

SECTION II

(1) ITEM NO.	(2) SMR CODE	(3) CAGE CODE	(4) PART NUMBER	(5) DESCRIPTION AND USABLE ON CODE (UOC)	(6) QTY
1			EMD58618	GROUP 1208 AIR BRAKE SYSTEM	2
2			EMD58620	FIG. 16 AIR SYSTEM	2
3			EMD51051	TUBING NYLON	1
4			EMD51562-2	LOOM	1
5			EMD58619	TUBING NYLON	2
6			EMD58621	LOOM	2
				END OF FIGURE	

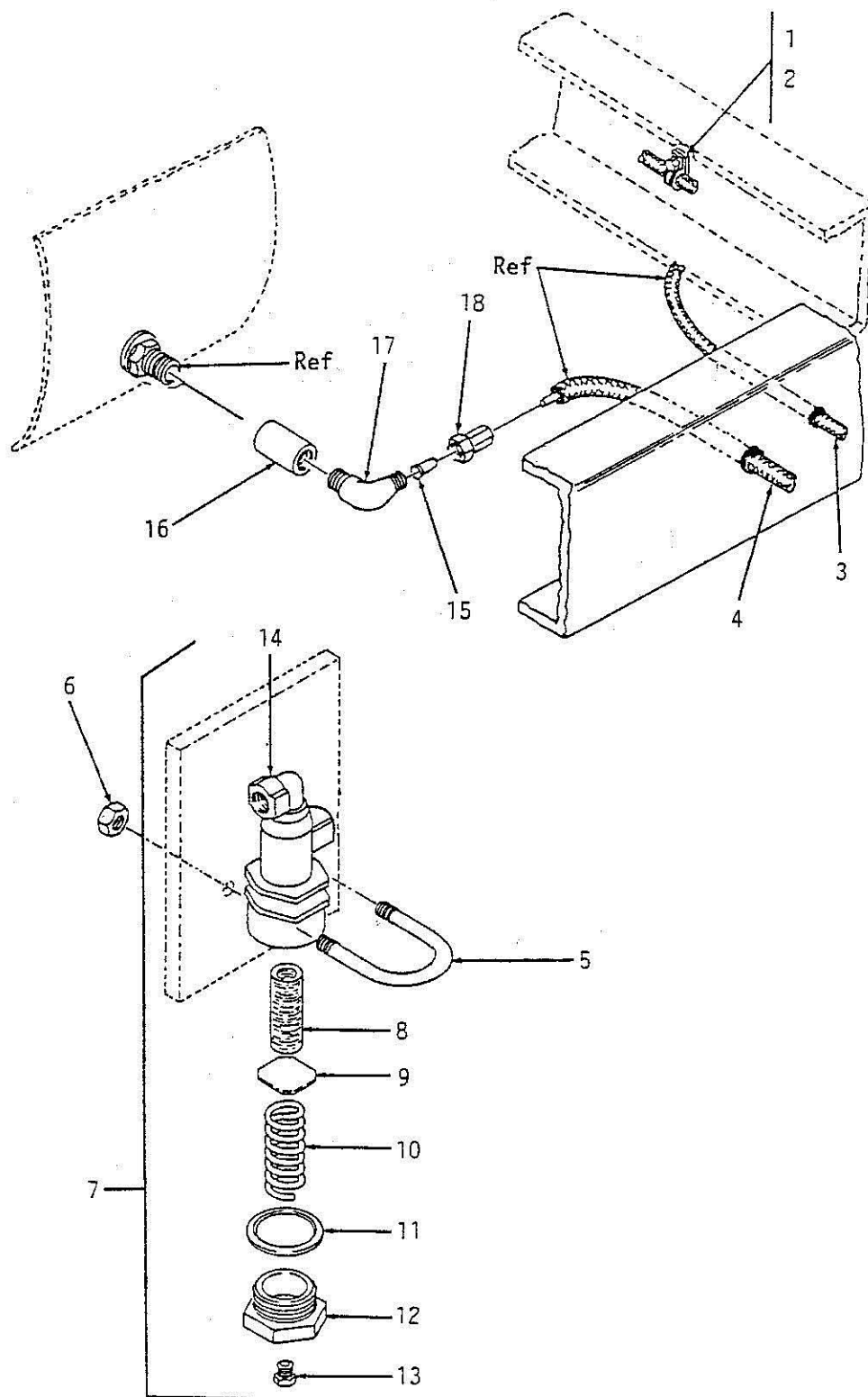


Figure 17. Air Lines and Filter

SECTION II

(1) ITEM NO.	(2) SMR CODE	(3) CAGE CODE	(4) PART NUMBER	(5) DESCRIPTION AND USABLE ON CODE (UOC)	(6) QTY
				GROUP 1208 AIR BRAKE SYSTEM	
				FIG. 17 AIR SYSTEM	
1			MS51922-1	NUT, SELF- LOCKING, HE	12
2			MS21333-71	CLAMP, LOOP	8
3			MS35489-78	GROMMET, NONMETALLIC	7
4			MS35489-107	GROMMET, NONMETALLIC	2
5			797296	BOLT, U	2
6			MS51967-2	NUT, PLAIN, HEXAGON	4
7			7411022	AIR FILTER, BRAKE LI	2
8			7411081	•FILTER ELEMENT, FLUID	1
9			7979614	•WASHER, SPRING TENSION	1
10			7979612	•SPRING, HELICAL, COMP	1
11			8329823	•GASKET	1
12			MS20913-1S	•PLUG, PIPE	1
13			7979613	•ADAPTER BUSHING	1
14			7415748	•ELBOW BODY, AIR LINE	1
15			1484X8	INSERT, TUBE FITTING	2
16			C3309X12	COUPLING, PIPE	1
17			MS39182-4	ELBOW, PIPE TO TUBE	1
18			MS39179-5	ADAPTER, STRAIGHT, PI	1
				END OF FIGURE	

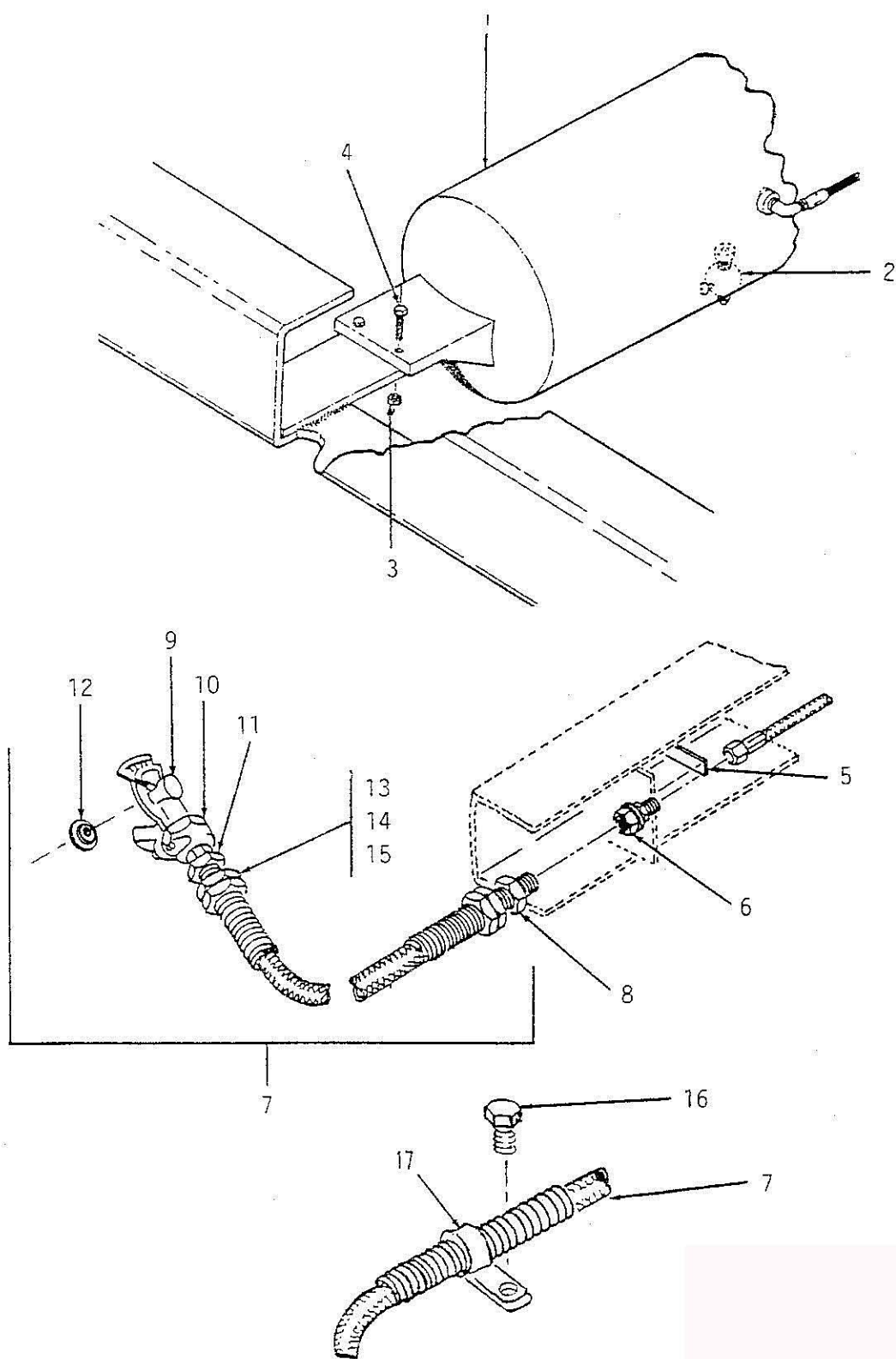
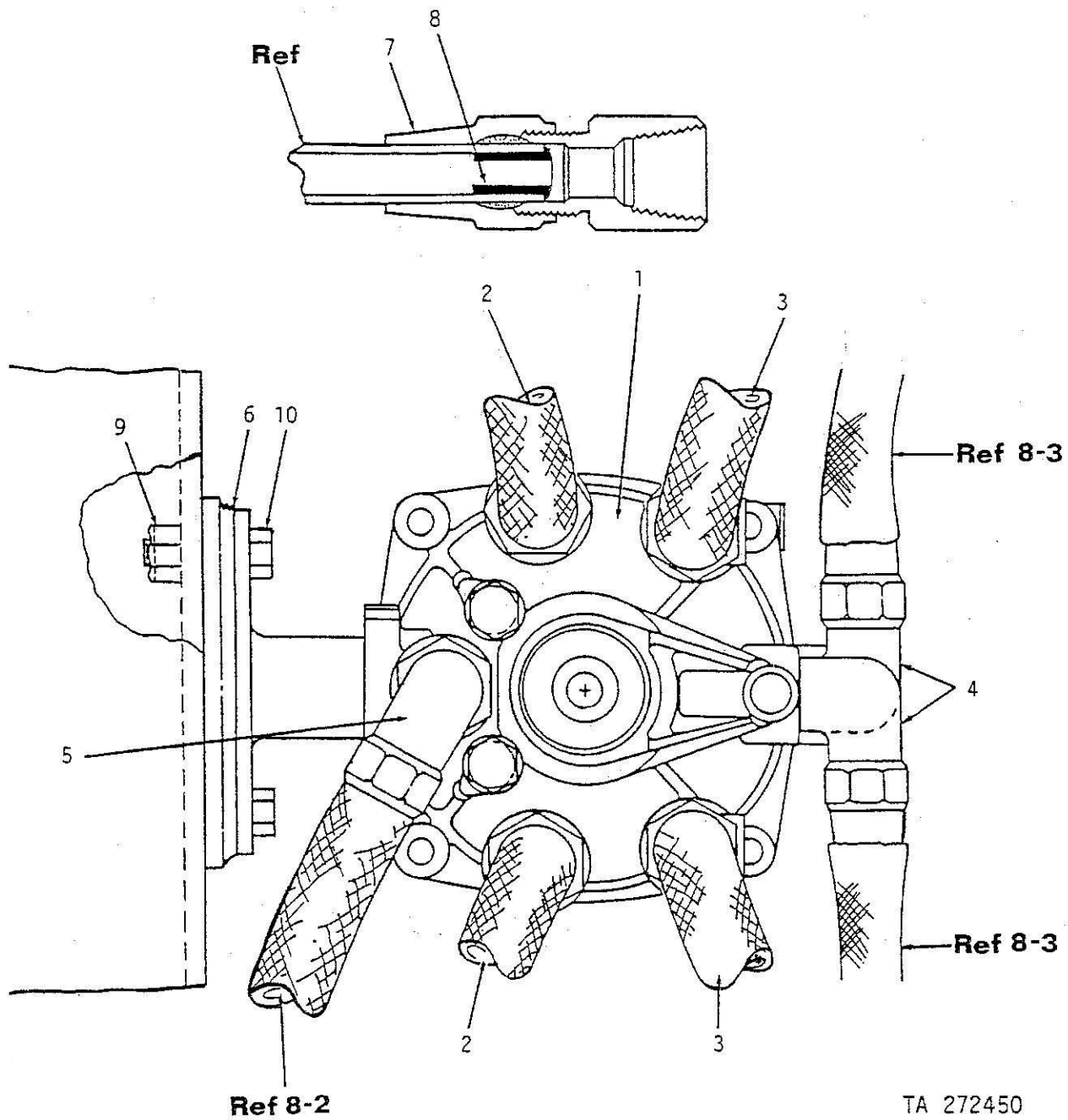


Figure 18. Air Line Couplings and Reservoir

SECTION II

(1) ITEM NO.	(2) SMR CODE	(3) CAGE CODE	(4) PART NUMBER	(5) DESCRIPTION AND USABLE ON CODE (UOC)	(6) QTY
				GROUP 1208 AIR BRAKE SYSTEM	
				FIG. 18 AIR SYSTEM	
1			22E746	TANK, PRESSURE	1
2			7759645	COCK, DRAIN	1
3			MS51922-17	NUT, SELF - LOCKING, HX	7
4			MS90725-64	SCREW, CAP, HX HD	7
5			MS53007-1	PLATE, IDENTIFICATION	1
5			MS53007-2	PLATE, IDENTIFICATION	1
6			5232954	COUPLING, PIPE	2
7			EMD70088-2	HOSE ASSEMBLY, NONMETALLIC	2
8			MS39137-2	• ADAPTER, STRAIGHT, PIPE	1
9			MS39134-1	• SPRING HOSE ADAPTER	2
10			MS35746-1	• COUPLING, HALF, QUICK	1
11			MS39133-2	• ADAPTER, STRAIGHT, PIPE	1
12			213630	• PACKING, PREFORMED	2
13			MS39133-1	• ADAPTER, STRAIGHT, PIPE	1
14			MS39136-1B	• SLEEVE, COMPRESSION	1
15			MS39135-1B	• NUT, HOSE COUPLING	1
16			MS51851-64	SCREW, TAPPING, THREAD	2
				END OF FIGURE	



NOTE: REFERENCES REFER TO FIGURE AND ITEM NUMBERS

Figure 19. Emergency Relay Valve

SECTION II

(1) ITEM NO.	(2) SMR CODE	(3) CAGE CODE	(4) PART NUMBER	(5) DESCRIPTION AND USABLE ON CODE (UOC)	(6) QTY
				GROUP 1208 AIR BRAKE SYSTEM	
				FIG. 19 AIR SYSTEM	
1			MS53004-2	PARTS KIT, MACHANICAL	1
2			228549	TUBING ASSEMBLY, NONMETALLIC	2
3			228554	TUBING ASSEMBLY, NONMETALLIC	2
4			MS39182-3	ELBOW, PIPE TO TUBE	2
5			MS39182-6	ELBOW, PIPE TO TUBE	1
6			241871	ADAPTER, BRAKE VALVE	1
7			MS39179-5	ADAPTER, STRAIGHT, PIPE	6
8			1484X6	INSERT, TUBE FITTING	1
9			MS51922-17	NUT, SELF-LOCKING, HEX	3
10			MS90725-64	SCREW, CAP, HEX HD	3
				END OF FIGURE	

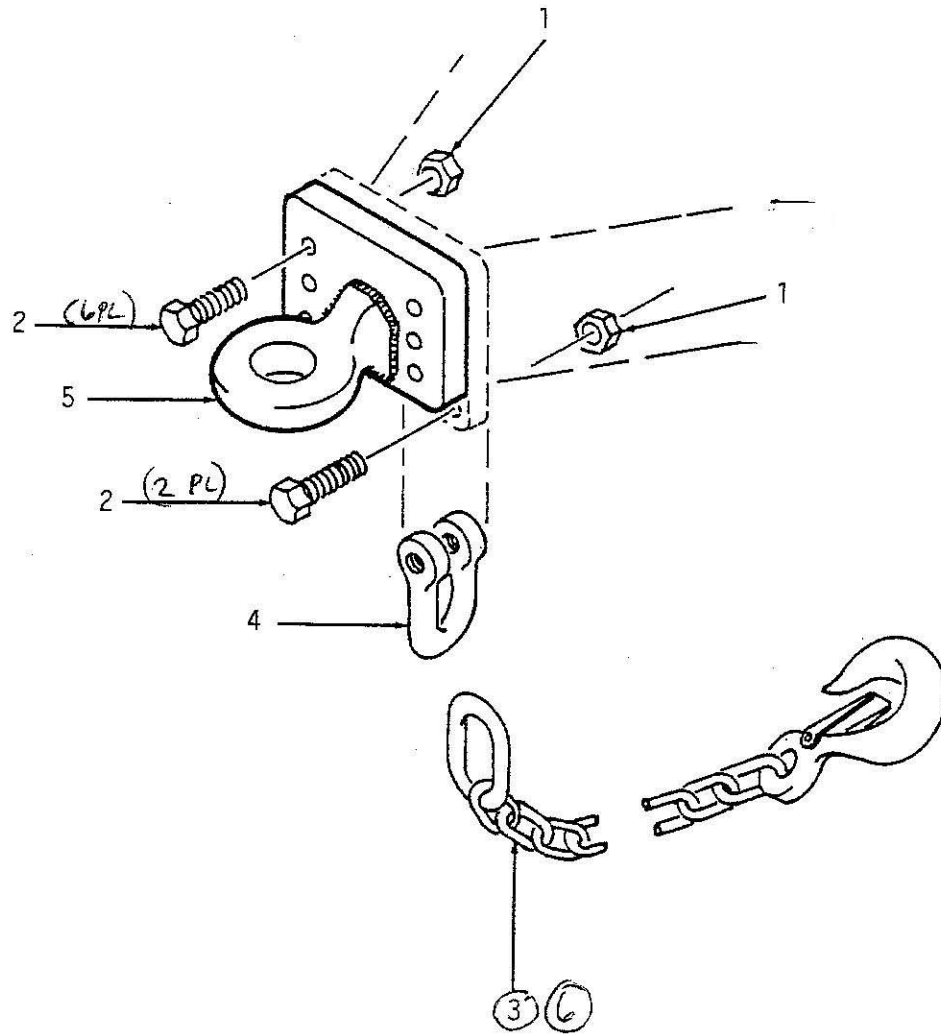


Figure 20. Lunette and Safety Chains

SECTION II

(1) ITEM NO.	(2) SMR CODE	(3) CAGE CODE	(4) PART NUMBER	(5) DESCRIPTION AND USABLE ON CODE (UOC)	(6) QTY
1			MS51967-23	GROUP 15 FRAME, TOWING ATTACHMENTS	8
2			MS90728-192	GROUP 1503 TOWING ATTACHMENTS	8
3			EMD58381-1	FIG. 20 LUNETTE AND SAFETY CHAINS	2
4			10891283	NUT, PLAIN, HEX	1
5			EMD11709	SCREW, CAP, HX HD	1
6			EMD58381-2	CHAIN ASSEMBLY,	2
7			EMD41126	SHACKLE, ANCHOR	2
				COUPLER, DRAWBAR, RING	
				CHAIN ASSEMBLY	
				LUG	
				END OF FIGURE	

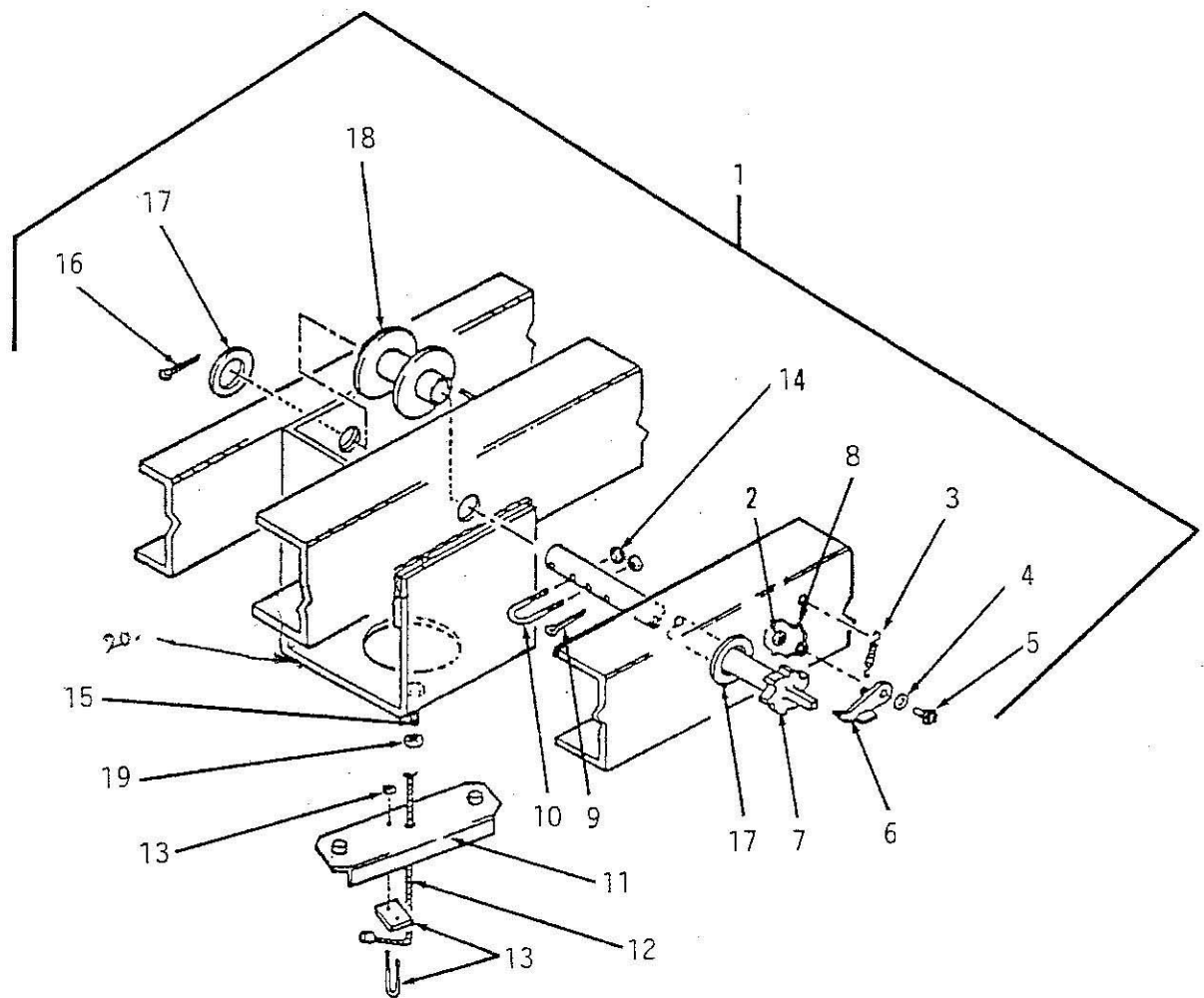


Figure 21. Spare Tire Carrier

SECTION II

(1) ITEM NO.	(2) SMR CODE	(3) CAGE CODE	(4) PART NUMBER	(5) DESCRIPTION AND USABLE ON CODE (UOC)	(6) QTY
				GROUP 1504 SPARE WHEEL CARRIER	
				FIG. 21 SPARE TIRE CARRIER	
1			EMD70106	SPARE TIRE CARRIER	1
2			MS51967-14	• NUT, PLAIN, HX	2
3			523	• SPRING, HELICAL	1
4			MS27183-17	• WASHER, FLAT	2
5			MS50725-115	• SCREW, CAP, HX	1
6			EMD50175	• PAWL	1
7			EMD70107	SHAFT, RATCHET	1
8			5264	• PAD EYE	2
9			MS24665-534	• PIN, COTTER	1
10			11636665	• BOLT, U	1
11			EMD70041	• SUPPORT ASSEMBLY	1
12			EMD7570	• ROPE, WIRE	1
13			MS16842-4	• CLAMP, WIRE ROPE	1
14			MS51922-1	• NUT, SELF - LOCKING	2
15			MS90727-187	• SCREW,CAP, HX HD	2
16			MS24665-655	• PIN, COTTER	1
17			MS27183-29	• WASHER, FLAT	2
18			EMD70037	• SPOOL WELDMENT	1
19			37888	• NUT, PLAIN, SINGLE	2
20			41165	• BRACKET, CARRIER	REF
				END OF FIGURE	

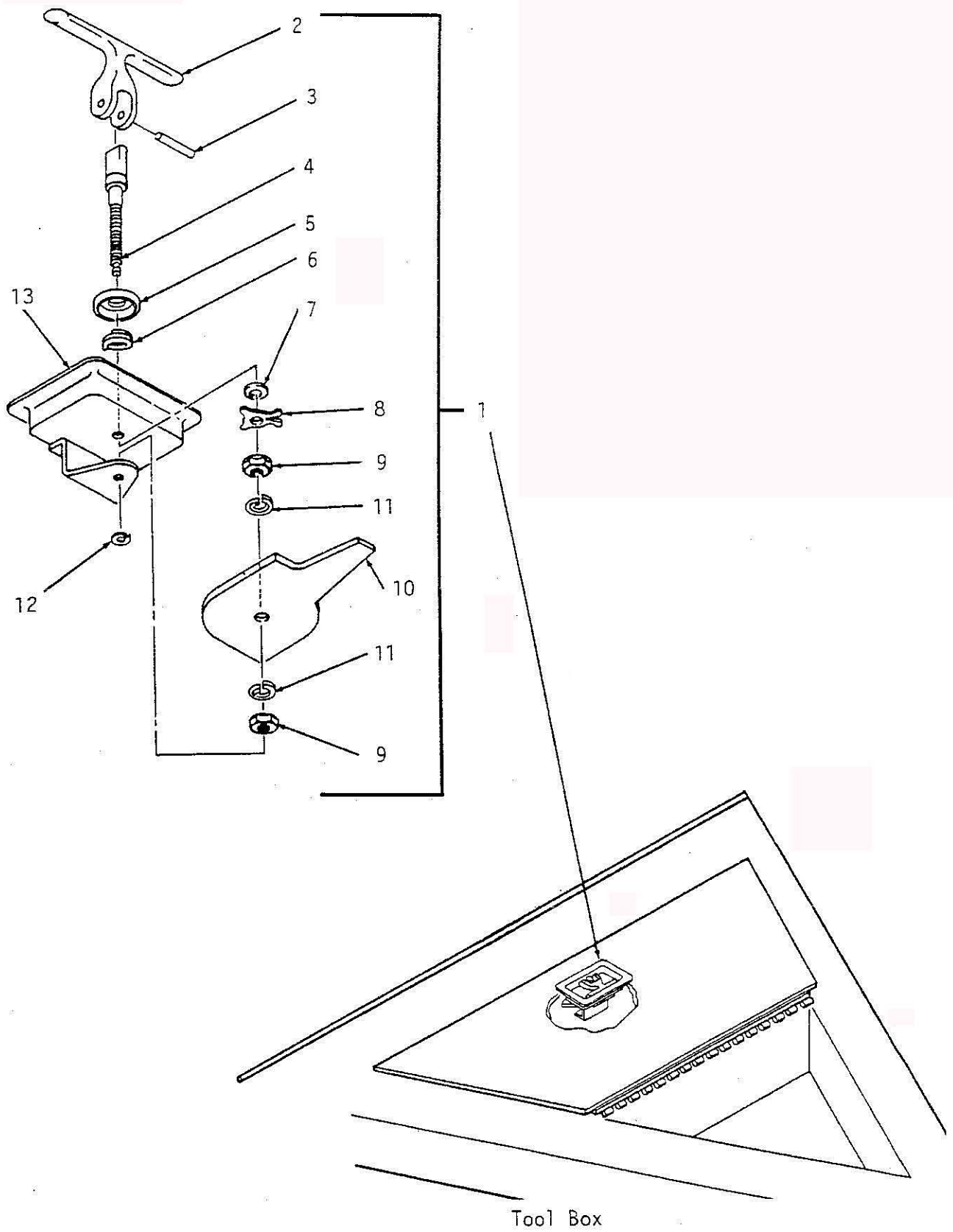


Figure 22. Tool Box

SECTION II

(1) ITEM NO.	(2) SMR CODE	(3) CAGE CODE	(4) PART NUMBER	(5) DESCRIPTION AND USABLE ON CODE (UOC)	(6) QTY
				GROUP 1805 FLOORS AND RELATED COMPONENTS	
				FIG. 22 TOOL BOX	
1			8000	FASTENER, PAWL	1
2			5630-OAX	• HANDLE, DOOR	1
3			2TX345E	• PIN, STRAIGHT	1
4			8000-1	• STUD, THREADED	1
5			15592	SPACER, RING	1
6			15595	• SPRING, HELICAL	1
7			11X-138	• WASHER, FLAT	1
8			8000-5	WASHER	1
9			5X252	• NUT	2
10			8000-2	• LATCH	1
11			12X-199	• WASHER, LOCK	2
12			16307-3	• CLIP, RETAINER	1
13			8000-50	• 8000-50	1
				END OF FIGURE	

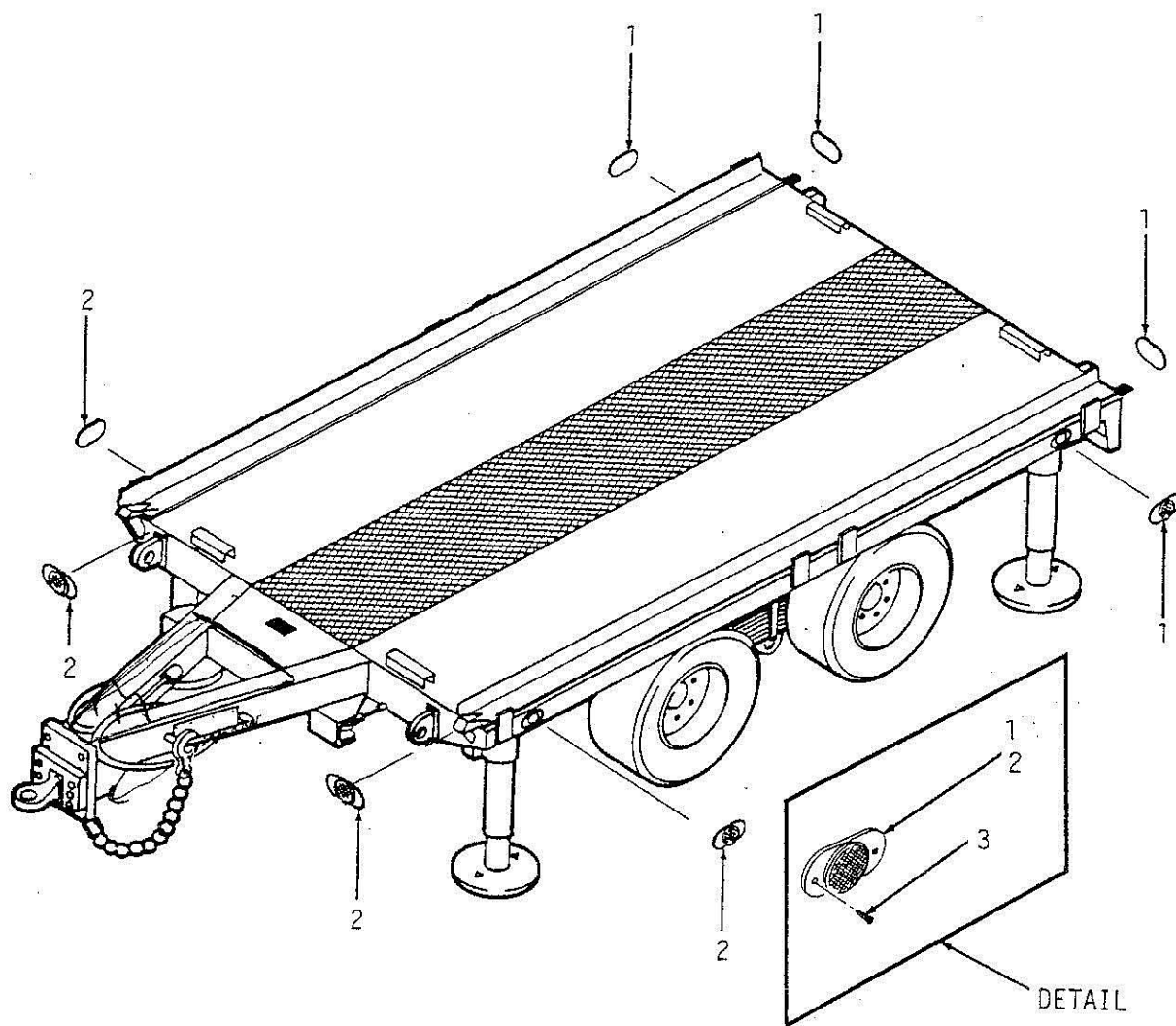


Figure 23. Reflectors

SECTION II

(1) ITEM NO.	(2) SMR CODE	(3) CAGE CODE	(4) PART NUMBER	(5) DESCRIPTION AND USABLE ON CODE (UOC)	(6) QTY
1			MS35387-1	GROUP 22 BODY ACCESSORY ITEMS	
2			MS35387-2	GROUP 22 02 ACCESSORY ITEMS	
3			MS35266-63	FIG. 23 REFLECTORS	
				REFLECTOR, INDICATING	4
				REFLECTOR, INDICATING	4
				SCREW, MACHINE	16
				END OF FIGURE	

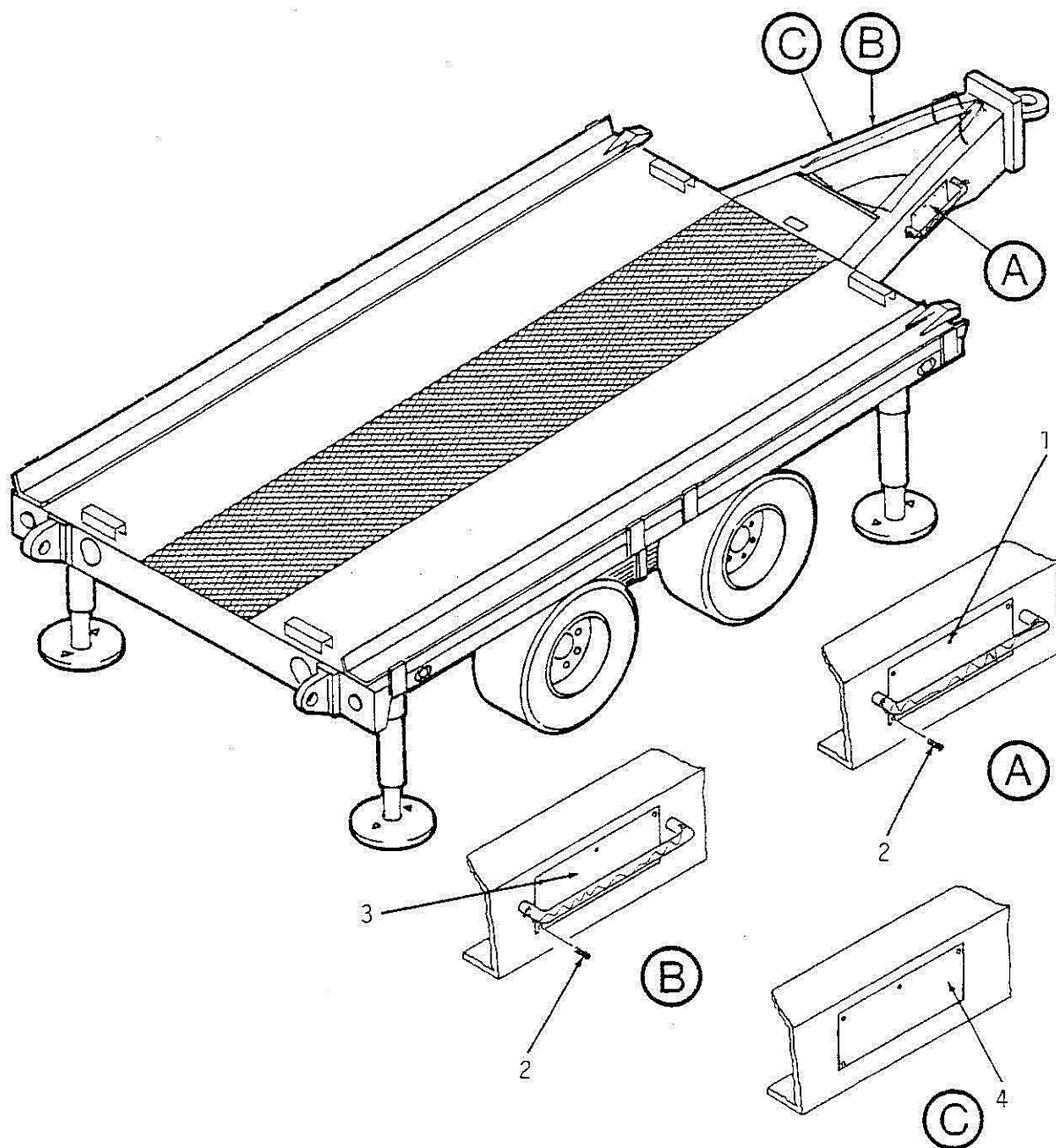


Figure 24. Data Plates

SECTION II

(1) ITEM NO.	(2) SMR CODE	(3) CAGE CODE	(4) PART NUMBER	(5) DESCRIPTION AND USABLE ON CODE (UOC)	(6) QTY
				GROUP 2210 DATA PLATES	
				FIG. 24 DATA PLATES	
1			EMD58389	PLATE, INSTRUCTION	1
2			EMD40479	PLATE, INSTRUCTION	1
3			MS21318-27	SCREW, DRIVE	15
4			EMD58370	DATA PLATE	1
5			EMD56138	PLATE, IDENTIFICATION	1
6			EMD58641	MARKER, IDENTIFICATION	1
				END OF FIGURE	