

NOTES:

1. APPLICABLE STANDARDS/SPECIFICATIONS:
A. DDG-STD-00100DIAR)
B. ANSI-Y14.5M-1982
2. THIS DRAWING IS FOR INSTALLATION PURPOSES ONLY. ALL ITEMS MARKED * ARE INCLUDED IN KIT.
3. LEGEND IDENTIFIED AS FOLLOWS:
* NEW PARTS
Δ PARTS TO BE REMOVED AND REUSED
⊕ PARTS TO BE REMOVED
⊖ PARTS ARE EXCESS AND CAN BE USED ELSEWHERE
4. OPTIONAL HOLE LOCATIONS:
USE BRACKET 12370472-1 AS A TEMPLATE.
5. CAUTION
DO NOT DAMAGE FUEL TANKS WHEN DRILLING HOLES.
6. OPTIONAL HOLE LOCATIONS:
USE BRACKET 12370472-2 AS A TEMPLATE.
7. REWORK 11594841 INTO 12370474 PER DWG 12370474.
8. REWORK 11594951 INTO 12370473 PER DWG 12370473.
9. APPLY ON ALL MATING SURFACES:
SEALANT - MIL-S-81733.
10. DIMENSIONING AND TOLERANCING APPLY TO THRU HOLES IN BODY.

- ⊕ PANEL - 11594841 (7)
- Δ 17-SCREW-MS24629-48
- Δ 17-WASHER-MS35338-43
- SCREW-MS24629-48
- WASHER-MS35338-43

Provided by WSUCougarRx

SECTION A-A

⊕ CONSOLE ASSY-11594951 (6)

Δ SEAT ASSY-11594488

Δ SEAT ASSY-11594487

TOP OF FLOOR IN CREW COMPARTMENT REF

DRIVER'S SEAT

VEHICLE (LOOKING REARWARD)

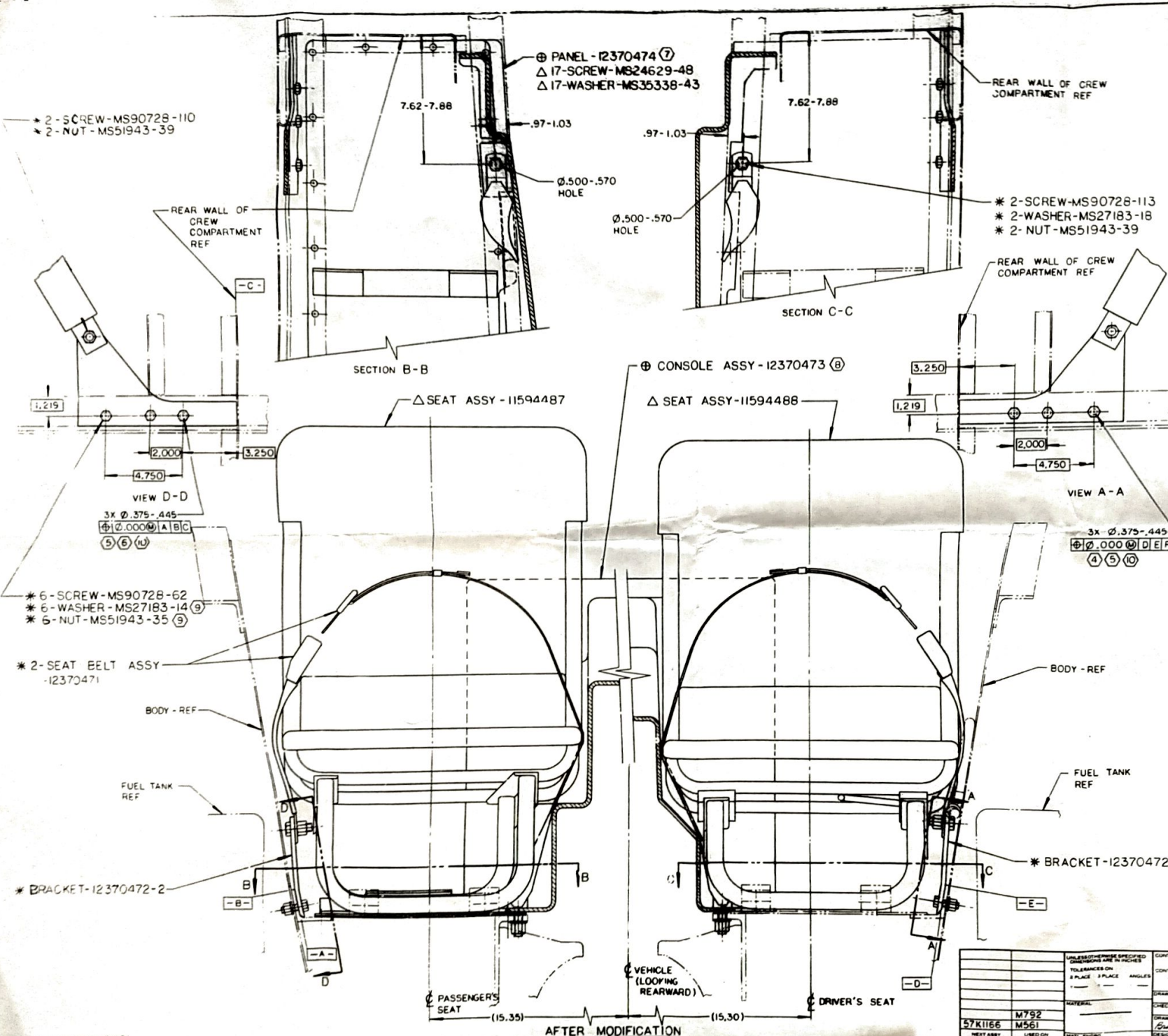
PASSENGER'S SEAT

BEFORE MODIFICATION

(15.35)

(13.30)

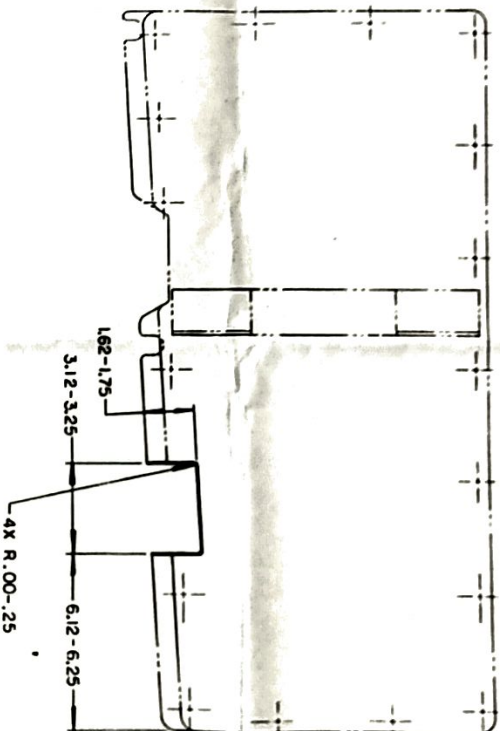
PART NO.		U.S. ARMY TANK - AUTOMOTIVE COMMAND	
CONTRACT NUMBER		WARRREN, MICHAEL 4237-000	
INSTALLATION INSTRUCTIONS		SEAT BELT MODIFICATION	
KIT 57KI166		E 19207 12370470	
DATE		11/2/84	
BY		11/2/84	
CHECKED		11/2/84	
APPROVED		11/2/84	
M792		M561	
NEXT AMT		USED ON	
APPL. CATION		SCALE 1/2	



CONTRACT NUMBER CONTRACTOR DRAWN BY: JEEB-04-12 CHECKED: EEB DRAWING APPROVAL: V-21-17 DESIGN BY: J. J. J.		PART NO. U.S. ARMY TANK - AUTOMOTIVE COMMAND WARREN, MICHIGAN 48090-5000	
MATERIAL 57K1166 M792 M561	NEXT ASSY USED ON APPLICATION	SIZE E 19207	SCALE 1/2 PART NO. 12370470

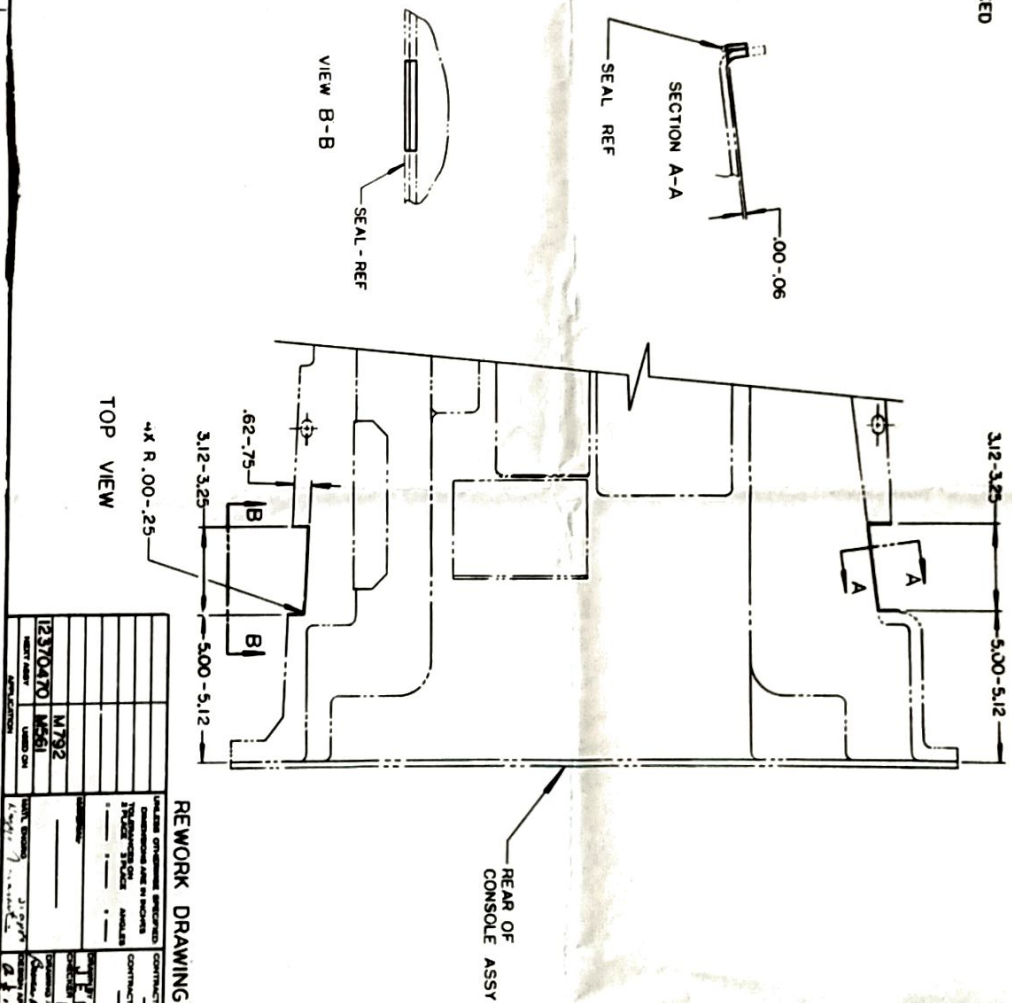
NOTES:

1. APPLICABLE STANDARDS/SPECIFICATIONS:
 - A. DOD-STD - C0100D (AR)
 - B. ANSI-V10, 5M - 1982
2. NETWORK 11594841 INTO 12370474 AS SHOWN.
3. APPLY PROTECTIVE FINISH TO REMOVED SURFACES PER DWG. 12369001.

[illegible]

Provided by WSUCougarX

3. APPLY PROTECTIVE FINISH TO REWORKED SURFACES PER DWG 12369014.

[illegible]