

# LUBRICATION ORDER

# L05-6115-585-12

15 June 1990

(SUPERSEDES L05-6115-585-12, 17 FEBRUARY 1987)

## GENERATOR SET, DIESEL ENGINE DRIVEN, TACTICAL SKID MOUNTED, 10KW

Reference TM 5-6115-585-12

Intervals and the related man-hour times are based on normal operation. The man-hour time specified is the time required to perform all the services prescribed for a particular interval. The interval shall be changed to compensate for abnormal operation and severe operating conditions or contaminated lubricants. The interval may be extended during periods of low level activity, commensurate with adequate preservation precautions.

Refer to TM to open acoustic suppression kit (ASK) access doors or remove cover for lubing.

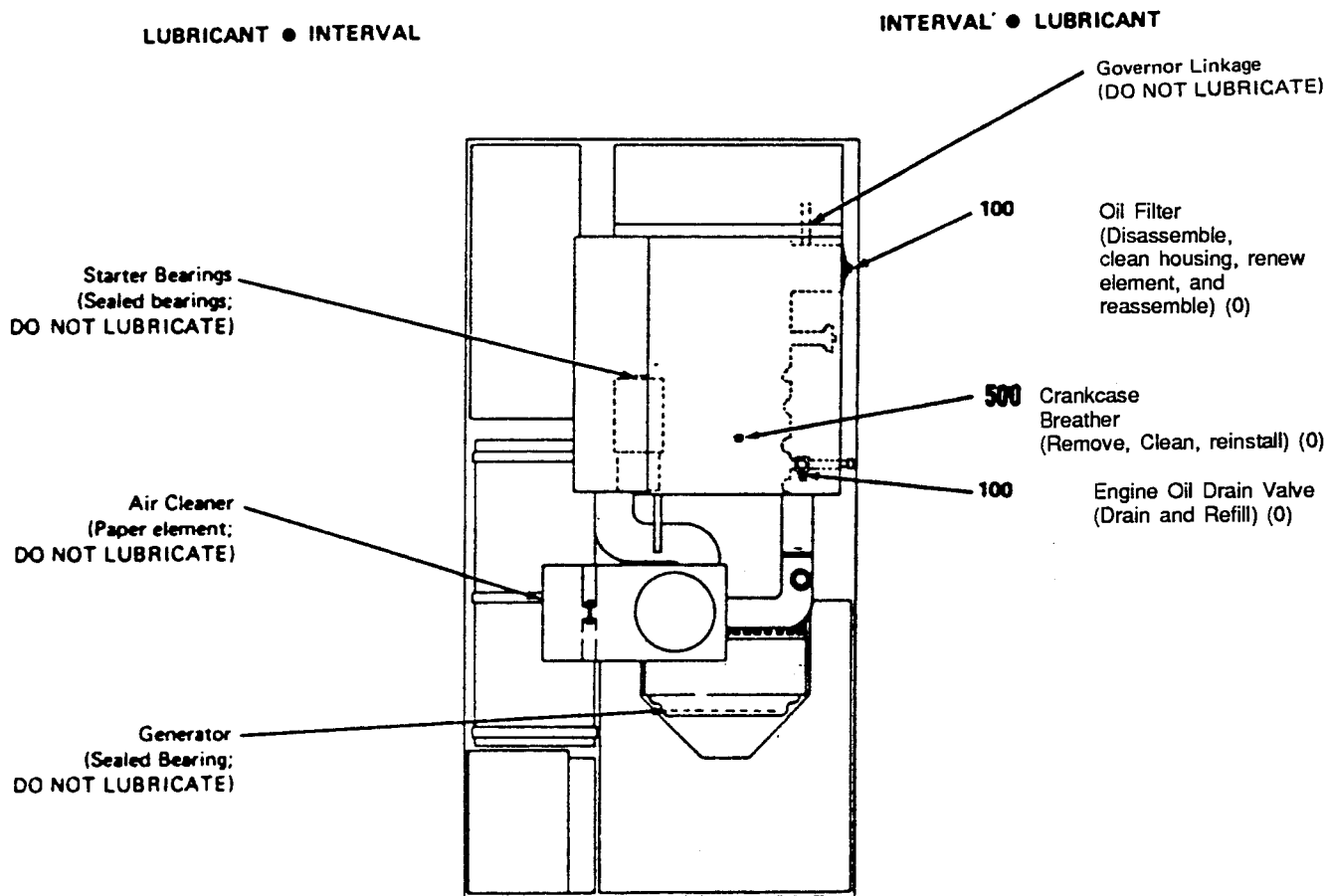
Relubricate after washing or fording.

Clean parts with SOLVENT, dry-cleaning, or with OIL, fuel Diesel. Dry before lubricating.

Drain crankcase when hot. Fill and check level.

Reporting errors and recommending improvements. You can help improve this manual. If you find any mistakes or if you know of a way to improve the procedures, please let us know. Mail your letter or DA Form 2028 [Recommended Changes to Publications and Blank Forms] direct to: Commander, U.S. Army Troop Support Command, ATTN: AMSTR-MCTS, 4300 Goodfellow Boulevard, St. Louis, MO. 63120-1798. A reply will be furnished to you.

Approved for public release; distribution is unlimited.



TOTAL TASK-HR		TOTAL TASK-HR	
INTERVAL	TASK-HR	INTERVAL	TASK-HR
500	0.5	100	0.4

- KEY -

LUBRICANTS	CAPACITY	EXPECTED TEMPERATURE			INTERVALS
		Above +30°F	+30°F to -10°F	-10°F to -65°F	
OE-OIL, Engine, Heavy Duty Crankcase Oil Can Points	5.5 qt. w/o Filter 6.5 qt. w/Filter	OE 30	OE 10	OES	Intervals given are in hours of normal operation
OES-OIL, Engine, Sub-zero					

NOTES:

1. FOR OPERATION OF EQUIPMENT IN PROTRACTED COLD TEMPERATURES BELOW -10°F. Remove lubricants prescribed in the key for temperatures above -10°F. Relubricate with lubricants specified in the key for temperatures below -10°F.

2. OIL CAN POINTS. Every 50 hours clean and lightly coat door hinges and latches, including those on ASK access doors, control cables, linkages, pins, and clevises and all exposed adjusting threads with OE.

3. OIL FILTER. After installing new filter element, fill crankcase, operate engine 5 minutes and check for leaks. Stop engine; check crankcase oil level and bring to full mark.

4. LUBRICANTS. The following is a list of lubricants with the Military Symbols and applicable specification numbers.  
OE-MIL-L-2104 OES-MIL-L-10295

Copy of this Lubrication Order will remain with the equipment at all times. Instructions contained herein are mandatory.

BY ORDER OF THE SECRETARY OF THE ARMY.

Official:

**WILLIAM J. MEEHAN, II**  
*Brigadier General, United States Army*  
*The Adjutant General*

CARL E. VUONO  
General, United States Army  
Chief of Staff

DISTRIBUTION:

To be distributed in accordance with  
DA Form 12-25E, (qty rqr bl no. 0868).

P I N : 032674/000