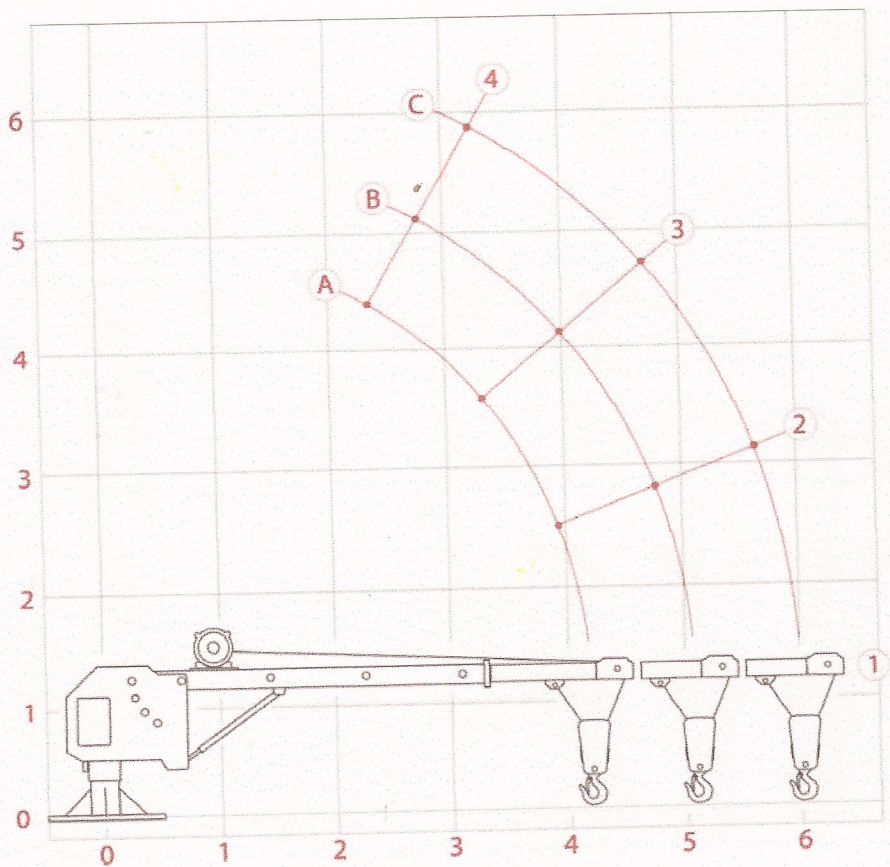
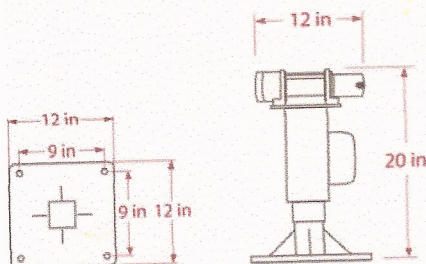


Load Chart			
Boom Position	A	B	C
4	2000	1900	1750
3	1775	1625	1450
2	1500	1375	1175
1	1350	1125	900



Optional mast heights, mounting bases, and custom configurations available.

SPECIFICATIONS

Max. Lifting Capacity	2000 Lbs
Winch Power	12V-DC
Circuit Breaker	Std.
Boom Length	52" - 72"
Boom Positions	12
Rotation	360° Manual
Bearings	3 Needle
Lifting Cable	35' x 3/16"
Control	10' Remote
Mounting Base	12" x 12"
Finish	Lt. Gray Powder Coat
Shipping Weight (Lbs)	245 lbs.
Warranty (excludes lifting cable)	1-Year

The Company reserves the right under the Product Improvement policy to change specification without notice or reference to specification used herein.

OPTIONS

- ▶ Boom Rest
- ▶ Outrigger
- ▶ Stainless Steel Cable
- ▶ Optional Cable Length
- ▶ Wireless Remote
- ▶ Optional Pedestal Height

(Specify when ordering)

800.288.6853

WESTERN MULE CRANES 1510 Merced St. Fresno, CA USA

