

This manual contains copyright material. Reproduced with permission of Miller Tilt-Top Trailer Inc.

---

**DEPARTMENT OF THE ARMY TECHNICAL MANUAL**

---

**ORGANIZATIONAL, DIRECT SUPPORT AND GENERAL  
SUPPORT MAINTENANCE REPAIR PARTS  
FOR  
TRAILER, FLAT BED, TILT LOADING, 5 TON, 4 WHEEL  
XM789**

---

**Headquarters, Department of the Army, Washington, D. C.  
29 December 1969**

---

| SECTION   | Page |
|---|------|
| I. INTRODUCTION                                     |      |
| II. PRESCRIBED LOAD ALLOWANCES                      |      |
| III. ORGANIZATIONAL REPAIR PARTS LIST               |      |
| GROUP 06 - ELECTRICAL SYSTEM                        |      |
| 0609 - Light .....                                  | 9    |
| 0613 - Chassis wiring.....                          | 9    |
| Group 12 - Brakes                                   |      |
| 1201 - Parking brake lever and cable assembly ..... | 10   |
| 1202 - Brake assembly .....                         | 10   |
| Group 13 - Wheel and Tires                          |      |
| 1311 - Wheel assembly.....                          | 10   |
| 1313 - Tires and tubes .....                        | 12   |
| Group 16 - Springs and Shock Absorbers              |      |
| 1601 - Springs .....                                | 12   |
| Group 18 - Frame                                    |      |
| 1812 - Trailer attaching parts .....                | 13   |
| GROUP 22 - BODY, CHASSIS AND ACCESSORY ITEMS        |      |
| 2202 - Accessory items.....                         | 13   |
| Group 24 - Hydraulic Lift Components                |      |
| 2404 - Hydraulic tilt cylinder .....                | 13   |
| IV. DIRECT AND GENERAL SUPPORT REPAIR PARTS LIST    |      |
| Group 06 - Electrical System                        |      |
| 0609 - Lights .....                                 | 14   |
| 0613 - Chassis wiring .....                         | 14   |

|   | <b>Page</b> |
|---|-------------|
| Group 11 - Axles                                    |             |
| 1100 - Front and rear axles .....                   | 15          |
| Group 12 - Brakes                                   |             |
| 1201 - Parking brake lever and cable assembly ..... | 15          |
| 1202 - Brake assembly .....                         | 15          |
| Group 13 - Wheels and Tires                         |             |
| 1311 - Wheel assembly .....                         | 16          |
| 1313 - Tires and tubes .....                        | 17          |
| Group 16 - Spring and Shock Absorbers               |             |
| 1601 - Springs. ....                                | 17          |
| Group 18 - Frame                                    |             |
| 1812 - Trailer attaching parts .....                | 18          |
| Group 22 - Body, Chassis and Accessory Items        |             |
| 2202 - Accessory items .....                        | 18          |
| Group 24 - Hydraulic Lift Components                |             |
| 2404 - Hydraulic tilt cylinder .....                | 18          |

## ORGANIZATIONAL, DIRECT SUPPORT, AND GENERAL SUPPORT REPAIR PARTS LIST

1. **Scope.** This manual lists repair parts required for the performance of organizational, direct support, and general support maintenance of the Trailer, Flat Bed, Tilt Loading, 5 Ton, 4 Wheel, XM789.

2. **General.** This Repair Parts List is divided into the following sections:

a. **Prescribed Load Allowance (PLA) - Section II.** A composite listing of repair parts having quantitative allowances for initial stockage at the organizational level.

b. **Organizational Repair Parts List - Section III.** A list of repair parts authorized for the performance of maintenance at the organizational support level in figure and item number sequence.

c. **Direct and General Support Repair Parts List - Section IV.** A list of repair parts authorized for performance of maintenance at the direct and general support level in figure and item number sequence.

d. **Federal Stock Number and Reference Number Index - Section V.** A list of Federal Stock Numbers in ascending numerical sequence, followed by a list of reference numbers appearing in all the listings, in ascending alpha-numeric sequence, cross-referenced to the illustration figure number and item number.

3. **Explanation of Columns.** The following provides an explanation of columns in the tabular lists in Section II through IV:

a. **Source, Maintenance, and Recoverability Codes (SMR), Column 1, Section III and IV.**

(1) Source code, indicates the selection status and source for the listed item. Source codes used are:

| Code | Explanation   |
|------|---|
| P    | Applied to repair parts which are stocked in or supplied from the GSA/DSA, or Army supply system, and authorized for use at indicated maintenance categories. |
| X1   | Applied to repair parts which are not procured or stocked, the requirement for which will be supplied by use of next higher assembly or component.            |

(2) Maintenance code, indicates the lowest category of maintenance authorized to install the listed item. The maintenance level codes are:

| Code | Explanation                            |
|------|--|
| O    | Organizational category of maintenance |
| F    | Direct support category of maintenance |

(3) Recoverability code, indicates whether unserviceable items should be returned for recovery or salvage. Items not coded are expendable.

**b. Federal Stock Number, Column 1 in Section II, Column 2 in Section III and IV.** This column indicates the Federal Stock Number assigned to the item and will be used for requisitioning purposes.

**c. Description, Column 2 in Section II, Column 3 in Section III and IV.** This column indicates the Federal item name and any additional description of the item required. The abbreviation "w/e", when used as a part of the nomenclature, indicates the Federal Stock Number includes all armament, equipment, accessories, and repair parts issued with the item. A part number or other reference number is followed by the applicable five-digit Federal supply code for manufacturers in parentheses. Repair parts quantities included in the kits, sets, and assemblies are shown in front of the repair part name.

**d. Unit of Measure (U/M), Column 4 of Section III and IV.** A 2-character alphabetic abbreviation indicating the amount of quantity of the item upon which the allowances are based, e.g., ft., ea, pr, etc.

**e. Quantity Incorporated in Unit, Column 5 of Section III and IV.** This column indicates the quantity of the item used in the assembly. A "≠" appearing in this column in lieu of a quantity indicates that a definite quantity cannot be indicated (e.g., shims, spacers, etc.).

**f. 15-Day Organizational Maintenance Allowance, Column 3 of Section II and Column 6 of Section III.**

(1) The allowance columns are divided into four subcolumns. Indicated in each subcolumn opposite the first appearance of each item is the total quantity of items authorized for the number of equipments supported. Subsequent appearances of the same item will have the letter "REF" in the allowance columns. Items authorized for use as required but not for initial stockage are identified with an asterisk in the allowance column.

(2) The quantitative allowances for organizational level of maintenance represents one initial prescribed load for a 15-day period for the number of equipments supported. Units and organizations authorized additional prescribed loads will multiply the number of prescribed loads authorized by the quantity of repair parts reflected in the density column applicable to the number of items supported to obtain the total quantity of repair parts authorized.

(3) Organizational units providing maintenance for more than 100 of these equipments shall determine the total quantity of parts required by converting the equipment quantity to a decimal factor by placing a decimal point before the next to last digit of the number to indicate hundredths, and multiplying the decimal factor by the parts quantity authorized in the 51-100 allowance column.

Example, authorized allowance

for 51-100 equipments is 40; for 150 equipments multiply 40 by 1.50 or 60 parts required.

(4) Subsequent changes to allowances will be limited as follows: No change in the range of items is authorized. If additional items are considered necessary, recommendation should be forwarded to Commanding General, Headquarters, US Army Tank-Automotive Command, ATTN: AMSTA-M, Warren, Michigan 48090, for exception or revision to the allowance list. Revisions to the range of items authorized will be made by the above based upon engineering experience, demand data, or TAERS information

**g. 30-Day DS/GS Maintenance Allowances, Column 6 and 7, of Section IV.**

(1) The allowance columns are divided into three subcolumns. Indicated in each subcolumn, opposite the first appearance of each item, is the total quantity of items authorized for the number of equipments supported. Subsequent appearances of the same item will have the letters "REF" in the applicable allowance columns. Items authorized for use as required but not for initial stockage are identified with an asterisk in the allowance column.

(2) The quantitative allowances for DS/GS levels of maintenance will represent initial stockage for a 30-day period for the number of equipments supported.

(3) Determination of the total quantity of parts required for maintenance of more than 100 of these equipments can be accomplished by converting the equipment quantity to a decimal factor by placing a decimal point before the next to last digit of the number to indicate hundredths, and multiplying the decimal factor by the parts quantity authorized in the 51-100 allowance column. Example, authorized allowance for 51-100 equipments is 40; for 150 equipments multiply 40 by 1.50 or 60 parts required.

**h. 1-Year Allowances Per 100 Equipments/Contingency Planning Purposes, Column 8 of Section IV.** This column indicates opposite the first appearance of each item the total quantity required for distribution and contingency planning purposes. The range of items indicates total quantities of all authorized items required to provide for adequate support of 100 equipments for one year.

**i. Illustration, Column 7 of Section III and Column 9 of Section IV.** This column is divided as follows:

- (1) **Figure Number, Subcolumn a.** Indicates the figure number of the illustration in which the item is shown.
- (2) **Item Number, Subcolumn b.** indicates the callout number used to reference the item in the illustration.

**4. How to Locate Repair Parts.**

**a.** When Federal Stock Number or reference number is unknown:

- (1) **First.** Using the table of contents, determine the functional subgroup within which the repair part belongs.

This is necessary since illustrations are prepared for functional subgroups and the listings are divided into the same groups. In some cases several illustrations were necessary to illustrate a functional subgroup. In these cases the subgroup has been divided into assembly groups.

- (2) **Second.** Find the illustration covering the functional subgroup or assembly to which the repair part belongs.

- (3) **Third.** Identify the repair part on the illustration and note the illustration figure and item number of the repair part.

- (4) **Fourth.** Using the Repair Parts Listing, find the functional subgroup or assembly to which the repair part belongs and locate the illustration figure and item number noted on the illustration.

**b.** When Federal Stock Number or reference number is known:

- (1) **First.** Using the Index of Federal Stock Numbers and Reference Numbers, find the pertinent Federal Stock Number or reference number. This index is in ascending FSN sequence followed by a list of reference numbers in alphanumeric sequence, cross-referenced to the illustration figure number and item number.

- (2) **Second.** Using the Repair Parts Listing, find the functional subgroup of the repair part and the illustration figure number and item number referenced in the Index of Federal Stock Numbers and Reference Numbers.

**5. Federal Supply Codes for Manufacturers.**

| Code    | Manufacturer         |
|---------|----------------------|
| (96906) | Military Standard    |
| (23379) | Miller Trailer, Inc. |

- 6. Recommendations for Maintenance Publication Improvements.** Report of errors, omissions, and recommendations for improving this publication by the individual user is encouraged. Reports (recommended changes to Publications) submitted on DA Form 2028 and forwarded direct to Commanding General, HQ, US Army Tank-Automotive Command, ATTN: AMSTA-M(NMP). Warren, Michigan 48090.

## SECTION II

| PRESCRIBED LOAD ALLOWANCE<br>(MIL-M-63001 B) |   |   |             |              |               |
|--|---|---|-------------|--------------|---------------|
| (1)<br>FEDERAL STOCK<br>NUMBER               | (2)<br>DESCRIPTION                                  | (3)<br>15-DAY ORGANIZATIONAL<br>MAINTENANCE ALLOWANCE |             |              |               |
|  |   | (a)<br>1-5  | (b)<br>6-20 | (c)<br>21-50 | (d)<br>51-100 |
|  | GROUP 06 - ELECTRICAL SYSTEM                        |   |             |              |               |
|  | 0609 - LIGHTS                                       |   |             |              |               |
| 6240-019-0877                                | LAMP, INCANDESCENT: MS15570-1251 (96906)            | 1   | 1           | 2            | 4             |
| 6240-044-6914                                | LAMP, INCANDESCENT: MS35478-1683 (96906)            | 1   | 1           | 2            | 4             |
|  | 0613 - CHASSIS WIRING HARNESS                       |   |             |              |               |
| 2590-772-8813                                | HARNESS ASSY: Intervehicular - 7728813              | 1   | 1           | 1            | 1             |
|  | GROUP 12 - BRAKES                                   |   |             |              |               |
|  | 1202 - BRAKE ASSEMBLY                               |   |             |              |               |
| 2530-782-4276                                | PARTS KIT, MAGNET: Right hand - 56222 (23379)       | 1   | 1           | 2            | 4             |
| 2530-782-4277                                | PARTS KIT, MAGNET: Left Hand - 56227 (23379)        | 1   | 1           | 2            | 4             |
| 2530-782-4312                                | PARTS KIT, BRAKE SPRINGS - 56214 (23379)            | 1   | 1           | 2            | 4             |
| 2530-782-4313                                | BRAKE SHOE SET: Internally actuated - 56210 (23379) | 1   | 1           | 2            | 4             |
| 3120-880-3066                                | BEARING, SLEEVE: 42680 (23379)                      | 1   | 1           | 1            | 1             |
|  | GROUP 13 - WHEELS AND TIRES                         |   |             |              |               |
|  | 1311 - WHEEL ASSEMBLY                               |   |             |              |               |
| 2530-782-4315                                | PACKING PREFORMED: Grease retaining - 10217 (23379) | *   | 1           | 2            | 3             |
| 3110-100-0544                                | CUP: Tapered roller - 10219 (23379)                 | 1   | 2           | 4            | 6             |
| 3110-100-3541                                | CONE AND ROLLERS: Tapered - 10218 (23379)           | 1   | 2           | 4            | 6             |
|  | 1313 - TIRES AND TUBES                              |   |             |              |               |
| 2640-052-0944                                | CAP: Tire valve - MS51375-1 (96906)                 | 2   | 3           | 5            | 9             |
|  | GROUP 16 - SPRINGS AND SHOCK ABSORBERS              |   |             |              |               |
|  | 1601 - SPRINGS                                      |   |             |              |               |
| 2510-782-4294                                | SPRING ASSY: Leaf - 10234 (23379)                   | *   | 1           | 1            | 2             |
| 5306-880-9709                                | "U"-BOLT: Pivot - 10238 (23379)                     | *   | 1           | 2            | 3             |



## SECTION III

| REPAIR PARTS FOR ORGANIZATIONAL MAINTENANCE<br>(MIL-M-63001 B) |                                   |   |                           |                                 |   |      |       |        |                     |             |
|--|-----------------------------------|---|---------------------------|---------------------------------|---|------|-------|--------|---------------------|-------------|
| (1)<br>SMR<br>CODE   | (2)<br>FEDERAL<br>STOCK<br>NUMBER | (3)<br>DESCRIPTION  | (4)<br>UNIT<br>OF<br>MEAS | (5)<br>QTY<br>INC<br>IN<br>UNIT | (6)<br>15-DAY ORG<br>MAINT<br>ALLOWANCE |      |       |        | (7)<br>ILLUSTRATION |             |
|  |                                   |   |                           |                                 | (a)                                     | (b)  | (c)   | (d)    | (a)                 | (b)         |
|  |                                   |   |                           |                                 | 1-5                                     | 6-20 | 21-50 | 51-100 | FIGURE<br>NO.       | ITEM<br>NO. |
|  |                                   | GROUP 06 - ELECTRICAL SYSTEM  |                           |                                 |   |      |       |        |                     |             |
|  |                                   | 0609- LIGHTS (Fig. 1)   |                           |                                 |   |      |       |        |                     |             |
| P O  | 6220-577-3434                     | LIGHT: clearance, service, amber -<br>MS35423-1 (96906)                 | ea                        | 2                               | *                                       | *    | *     | *      | 1                   | 1           |
| P O  | 6220-726-1916                     | LIGHT: clearance, service, red -<br>MS35423-2 (96906)                   | ea                        | 2                               | *                                       | *    | *     | *      | 1                   | 2           |
| P O  | 6220-577-3435                     | LIGHT: clearance, blackout, amber -<br>MS35424-1 (96906)                | ea                        | 2                               | *                                       | *    | *     | *      | 1                   | 3           |
| P O  | 6220-727-3288                     | LIGHT: clearance, blackout, red -<br>MS35424-2 (96906)                  | ea                        | 2                               | *                                       | *    | *     | *      | 1                   | 4           |
| P O  | 5305-984-6210                     | SCREW: 8-32 x 3/8, lg, hex (slot),<br>washer face - 10611 (23379)       | ea                        | 32                              | *                                       | *    | *     | *      | 1                   | 5           |
| P O  | 6220-669-5623                     | LIGHT: service stop, service tail,<br>blackout tail - MS51329-1 (96906) | ea                        | 2                               | *                                       | *    | *     | *      | 1                   | 6           |
| P O  | 5306-045-1976                     | CAPSCREW: w/lockwasher, 3/8-16NC x<br>3/4 lg - 10612 (23379)            | ea                        | 4                               | *                                       | *    | *     | *      | 1                   | 7           |
| P O  | 6220-846-9745                     | STOPLIGHT: vehicular, blackout -<br>MS51302-1 (96906)                   | ea                        | 1                               | *                                       | *    | *     | *      | 1                   | 8           |
| P O  | 2590-782-4257                     | PIN: stabilizing, electrical light<br>system - 10613 (23379)            | ea                        | 1                               | *                                       | *    | *     | *      | 1                   | 9           |
| P O  | 5306-880-9784                     | CAPSCREW: 5/16-24NF x 3/4 lg, w/lockwasher -<br>10614 (23379)           | ea                        | 1                               | *                                       | *    | *     | *      | 1                   | 10          |
|  |                                   | CONNECTOR: receptacle, w/gasket -<br>MS75021 (96906)                    | ea                        | 1                               |   |      |       |        | 1                   | 14          |
| P O  | 6240-019-0877                     | LAMP, INCANDESCENT: MS15570-1251 (96906) (Non-illustrated)              | ea                        | 2                               | 1                                       | 1    | 2     | 4      |                     |             |
| P O  | 6240-044-6914                     | LAMP, INCANDESCENT: MS35478-1683 (96906) (Non-illustrated)              | ea                        | 2                               | 1                                       | 1    | 2     | 4      |                     |             |
|  |                                   | 0613 - CHASSIS WIRING (Fig. 1)  |                           |                                 |   |      |       |        |                     |             |
| P O  | 2590-782-4262                     | COVER: receptacle, Bendix - 10616<br>(96906)                            | ea                        | 1                               | *                                       | *    | *     | *      | 1                   | 15          |
| P O  | 2590-782-4261                     | COVER ASSY: front corners (screws & gaskets) -<br>10617 (23379)         | ea                        | 2                               | *                                       | *    | *     | *      | 1                   | 16          |
| P O  | 2590-782-4260                     | COVER ASSY: main (screw & gasket) -<br>10618 (23379)                    | ea                        | 1                               | *                                       | *    | *     | *      | 1                   | 17          |
| P O  | 2590-782-4259                     | COVER ASSY: brake (screw & gasket) -<br>10619 (23379)                   | ea                        | 1                               | *                                       | *    | *     | *      | 1                   | 18          |
| P O  | 2590-782-4258                     | CONNECTOR ASSY: shells, sleeve & washer<br>10620 (23379)                | ea                        | 4                               | *                                       | *    | *     | *      | 1                   | 19          |
| P O  | 2590-772-8813                     | HARNESS ASSY: intervehicular - 7728813<br>(Non-illustrated)             | ea                        | 1                               | 1                                       | 1    | 1     | 1      |                     |             |

## SECTION III - Continued

| REPAIR PARTS FOR ORGANIZATIONAL MAINTENANCE<br>(MIL-M-63001 B) |                                   |  |                           |                                 |   |      |       |        |                     |             |
|--|-----------------------------------|--|---------------------------|---------------------------------|---|------|-------|--------|---------------------|-------------|
| (1)<br>SMR<br>CODE   | (2)<br>FEDERAL<br>STOCK<br>NUMBER | (3)<br>DESCRIPTION   | (4)<br>UNIT<br>OF<br>MEAS | (5)<br>QTY<br>INC<br>IN<br>UNIT | (6)<br>15-DAY ORG<br>MAINT<br>ALLOWANCE |      |       |        | (7)<br>ILLUSTRATION |             |
|  |                                   |  |                           |                                 | (a)                                     | (b)  | (c)   | (d)    | (a)                 | (b)         |
|  |                                   |  |                           |                                 | 1-5                                     | 6-20 | 21-50 | 51-100 | FIGURE<br>NO.       | ITEM<br>NO. |
|  |                                   | GROUP 12- BRAKES   |                           |                                 |   |      |       |        |                     |             |
|  |                                   | 1201 - PARKING BRAKE LEVER AND CABLE<br>ASSEMBLY (FIG. 2)  |                           |                                 |   |      |       |        |                     |             |
| P O  | 2530-782-4269                     | LEVER: manual control, hand brake -<br>10600 (23379)   | ea                        | 1                               | *                                       | *    | *     | *      | 2                   | 1           |
|  |                                   | PIN: w/flatwasher and cotter key -<br>10604 (23379)  | ea                        | 1                               | *                                       | *    | *     | *      | 2                   | 2           |
| P O  | 2530-782-4283                     | SPACER: sleeve, brake cable - 10607<br>(23379)   | ea                        | 2                               | *                                       | *    | *     | *      | 2                   | 3           |
| P O  | 5305-880-9772                     | CAPSCREW ASSY: 5/16-18NC x 1-5/8, w/nut &<br>lockwasher - 10603 (23379)  | ea                        | 3                               | *                                       | *    | *     | *      | 2                   | 4           |
| P O  | 2530-169-5786                     | PIN: w/cotter key - 10608 (23379)  | ea                        | 2                               | *                                       | *    | *     | *      | 2                   | 5           |
| P O  | 2530-782-4266                     | CABLE ASSY: left hand brake - 10602<br>(23379)   | ea                        | 1                               | *                                       | *    | *     | *      | 2                   | 6           |
| P O  | 2530-782-4268                     | CABLE ASSY: right hand brake - 10601<br>(23379)  | ea                        | 1                               | *                                       | *    | *     | *      | 2                   | 7           |
| P O  | 2530-782-4282                     | CLAP: brake cable - 10606 (23379)  | ea                        | 2                               | *                                       | *    | *     | *      | 2                   | 8           |
| P O  | 2530-782-4271                     | SPACER: sleeve, brake system - 10605<br>(23379)  | ea                        | 1                               | *                                       | *    | *     | *      | 2                   | 9           |
|  |                                   | 1202 - BRAKE ASSEMBLY (FIG. 3)   |                           |                                 |   |      |       |        |                     |             |
| P O  | 2530-782-4312                     | PARTS KIT: brake springs - 56214<br>(23379)<br>COMPOSED OF:<br>2 - 44934 adjusting screw spring<br>4 - 45424 retractor spring                    | ea                        | 1                               | *                                       | 1    | 1     | 2      | 3                   | 1           |
| P O  | 2530-782-4320                     | PLATE: shoe guide, brake system -<br>46424 (23379)   | ea                        | 1                               | *                                       | *    | *     | *      | 3                   | 2           |
| X1 O   |                                   | PLATE: backing, and anchor assy - r. h.<br>48754 (23379)   | ea                        | 1                               |   |      |       |        | 3                   | 3           |
| X1 O   |                                   | PLATE: backing, and anchor assy - l. h.<br>48755 (23379)   | ea                        | 1                               |   |      |       |        | 3                   | 4           |
|  | 5935-782-8661                     | CONNECTOR ASSY: magnet lead - 48770<br>(23379)   | ea                        | 1                               |   | *    | *     | *      | 3                   | 5           |
| P O  | 3120-880-3066                     | BEARING: sleeve, oilite- 42680<br>(23379)  | ea                        | 1                               | 1                                       | 1    | 1     | 1      | 3                   | 6           |
| P O  | 2530-782-4284                     | COVER: broke adjusting slot - 58921<br>(23379)   | ea                        | 1                               | *                                       | *    | *     | *      | 3                   | 7           |
| P O  | 2530-782-4277                     | PARTS KIT: magnet, l. h. - 56277 (23379)<br>COMPOSED OF<br>1 - 48762 magnet<br>1 - 43747 retaining ring<br>1 - 46264 spring<br>2 - 49789 adaptor | ea                        | 1                               | *                                       | 1    | 1     | 2      | 3                   | 8           |

## SECTION III - Continued

| REPAIR PARTS FOR ORGANIZATIONAL MAINTENANCE<br>(MIL-M-63001 B) |                                   |   |                           |                                 |   |      |       |        |                     |             |
|--|-----------------------------------|---|---------------------------|---------------------------------|---|------|-------|--------|---------------------|-------------|
| (1)<br>SMR<br>CODE   | (2)<br>FEDERAL<br>STOCK<br>NUMBER | (3)<br>DESCRIPTION  | (4)<br>UNIT<br>OF<br>MEAS | (5)<br>QTY<br>INC<br>IN<br>UNIT | (6)<br>15-DAY ORG<br>MAINT<br>ALLOWANCE |      |       |        | (7)<br>ILLUSTRATION |             |
|  |                                   |   |                           |                                 | (a)                                     | (b)  | (c)   | (d)    | (a)                 | (b)         |
|  |                                   |   |                           |                                 | 1-5                                     | 6-20 | 21-50 | 51-100 | FIGURE<br>NO.       | ITEM<br>NO. |
|  |                                   | 1202 - BRAKE ASSEMBLY (FIG. 3) - Continued  |                           |                                 |   |      |       |        |                     |             |
| P O  | 2530-782-4276                     | PARTS KIT: magnet, r. h. - 56222 (23379)<br>COMPOSED OF:<br>1 - 48763 magnet<br>1 - 43747 retaining ring<br>1 - 46264 spring<br>1 - 49789 adaptor | ea                        | 1                               | *                                       | 1    | 1     | 2      | 3                   | 9           |
| P O  | 2530-782-4313                     | BRAKE SHOE SET: internally actuated -<br>56210 (23379)<br>COMPOSED OF:<br>1 - 46397 shoe & lining primary<br>1 - 46398 shoe & lining secondary    | ea                        | 2                               | 1                                       | 1    | 2     | 4      | 3                   | 10          |
| P O  | 5305-880-9747                     | SCREW ASSY: adjusting, brake - 58929<br>(23379)   | ea                        | 1                               | *                                       | *    | *     | *      | 3                   | 11          |
| P O  | 2530-782-4286                     | ACCESSORY KIT: broke shoe - 56266<br>(23379)<br>COMPOSED OF:<br>2 - 30687 pin<br>2 - 30688 spring<br>4 - 30690 cup                                | ea                        | 1                               | *                                       | 1    | 1     | 2      | 3                   |             |
| P O  | 2530-782-4279                     | ACTUATING ASSY: magnet and lever, l. h.,<br>12 volt (green loom) - 48761 (23379)  | ea                        | 1                               | *                                       | *    | *     | *      | 3                   | 13          |
| P O  | 2530-782-4278                     | ACTUATING ASSY: magnet and lever, r. h.,<br>12 volt (green loom) - 48760 (23379)  | ea                        | 1                               | *                                       | *    | *     | *      | 3                   | 14          |
| P O  | 2530-782-4273                     | CLAMP: wire - 30847 (23379)   | ea                        | 1                               | *                                       | **   | *     | *      | 3                   | 15          |
| P O  | 2590-169-5728                     | PLATE: armature - 30944 (23379) (Non-illustrated)   | ea                        | 1                               | *                                       | *    | *     | *      |                     |             |
| P O  | 2530-782-4267                     | BRAKE ASSY: r. h., 12 volt - 48960<br>(23379) (Non-illustrated)   | ea                        | 1                               | *                                       | *    | *     | *      |                     |             |
| P O  | 2530-782-4285                     | BRAKE ASSY: l. h., 12 volt - 48961<br>(23379) (Non-illustrated)   | ea                        | 1                               | *                                       | *    | *     | *      |                     |             |
|  |                                   | GROUP 13 - WHEELS AND TIRES   |                           |                                 |   |      |       |        |                     |             |
|  |                                   | 1311 - WHEELS (FIG. 4)  |                           |                                 |   |      |       |        |                     |             |
| P O  | 5307-017-0534                     | STUD: wheel, component of wheel assy -<br>10632 (23379)   | ea                        | 24                              | *                                       | *    | *     | *      | 4                   |             |
| P O  | 5310-017-0512                     | WASHER: stud wheel, component of wheel assy -<br>10628 (23379)  | ea                        | 24                              | *                                       | *    | *     | *      | 4                   | 15          |
| P O  | 5315-234-1664                     | PIN, COTTER: 3/16 x 1-1/2 in. wheel assy<br>10636 (23379) MS24665 (96906)   | ea                        | 4                               | *                                       | *    | *     | *      | 4                   | 16          |
| P O  | 2530-782-4314                     | CAP: grease, wheel, part of wheel assy<br>10637 (23379)   | ea                        | 4                               | *                                       | *    | *     | *      | 4                   | 17          |
| P O  | 5310-017-0508                     | NUT: slotted, hexagon, spindle, part of<br>wheel assy - 10247 (23379)   | ea                        | 4                               | *                                       | *    | *     | *      | 4                   | 18          |
| P O  | 5310-017-0511                     | WASHER: spindle, wheel, part of wheel assy -<br>10635 (23379)   | ea                        | 4                               | *                                       | *    | *     | *      | 4                   | 19          |

## SECTION III - Continued

| REPAIR PARTS FOR ORGANIZATIONAL MAINTENANCE<br>(MIL-M-63001 B) |                                   |  |                           |                                 |   |      |       |        |                     |             |
|--|-----------------------------------|--|---------------------------|---------------------------------|---|------|-------|--------|---------------------|-------------|
| (1)<br>SMR<br>CODE   | (2)<br>FEDERAL<br>STOCK<br>NUMBER | (3)<br>DESCRIPTION   | (4)<br>UNIT<br>OF<br>MEAS | (5)<br>QTY<br>INC<br>IN<br>UNIT | (6)<br>15-DAY ORG<br>MAINT<br>ALLOWANCE |      |       |        | (7)<br>ILLUSTRATION |             |
|  |                                   |  |                           |                                 | (a)                                     | (b)  | (c)   | (d)    | (a)                 | (b)         |
|  |                                   |  |                           |                                 | 1-5                                     | 6-20 | 21-50 | 51-100 | FIGURE<br>NO.       | ITEM<br>NO. |
|  |                                   | 1311 - WHEELS (FIG. 4) - Continued   |                           |                                 |   |      |       |        |                     |             |
| P O  | 3110-100-3541                     | CONE AND ROLLERS: tapered roller bearing,<br>wheel assy - 10218 (23379)        | ea                        | 8                               | *                                       | 1    | 1     | 1      | 4                   | 20          |
| P O  | 3110-100-0544                     | CUP tapered roller bearing, inner or outer,<br>wheel assy - 10219 (23379)      | ea                        | 8                               | *                                       | 1    | 1     | 1      | 4                   | 21          |
| P O  | 2530-782-4316                     | LUG NUT: wheel - 10634 (23379)   | ea                        | 24                              | *                                       | *    | *     | *      | 4                   | 22          |
| P O  | 2530-782-4319                     | WHEEL: pneumatic, tire - 10633 (23379)   | ea                        | 4                               | *                                       | *    | *     | *      | 4                   | 23          |
| P O  | 2530-782-4318                     | DRUM: brake - 10630(23379)   | ea                        | 4                               | *                                       | *    | *     | *      | 4                   | 25          |
| P O  | 2530-782-4315                     | PACKING: preformed, grease retaining,<br>part of wheel assy - 10217 (23379)    | ea                        | 4                               | *                                       | 1    | 2     | 3      | 4                   | 26          |
|  |                                   | 1313 - TIRES AND TUBES (NON-<br>ILLUSTRATED)                                   |                           |                                 |   |      |       |        |                     |             |
| P O  | 2640-052-0944                     | CAP, TIRE VALVE: MS51375-1 (96906)   | ea                        | 4                               | 2                                       | 3    | 5     | 9      |                     |             |
| P F  | 2610-294-4944                     | TIRE, PNEUMATIC MS35390-1 (96906)  | ea                        | 4                               |   |      |       |        |                     |             |
|  |                                   | GROUP 16 - SPRINGS AND SHOCK<br>ABSORBERS                                      |                           |                                 |   |      |       |        |                     |             |
|  |                                   | 1601 - SPRINGS (FIG. 4)  |                           |                                 |   |      |       |        |                     |             |
| P O  | 5315-234-1673                     | PIN: cotter, 5/16 x 3 - 10303 (23379)  | ea                        | 2                               | *                                       | *    | *     | *      | 4                   | 1           |
| X1 O   |                                   | HOUSING: pivot assembly - 10330 (23379)  | ea                        | 2                               |   |      |       |        | 4                   | 2           |
| X1 O   |                                   | CAPSCREW ASSY: 3/4 - 10NC x 2, pivot<br>housing - 10243 (23379)                | ea                        | 8                               |   |      |       |        | 4                   | 3           |
| P O  | 4730-013-8105                     | FITTING: grease - 10242 (23379)  | ea                        | 2                               | *                                       | *    | *     | *      | 4                   | 4           |
| P O  | 5305-880-9763                     | CAPSCREW: w/lockwasher, 1/2 x 13NC x 7/8,<br>h. t. pivot shaft - 10108 (23379) | ea                        | 4                               | *                                       | *    | *     | *      | 4                   | 5           |
| P O  | 2510-782-4295                     | SHAFT: pivot assembly - 10304 (23379)  | ea                        | 2                               | *                                       | *    | *     | *      | 4                   | 6           |
| P O  | 5306-880-9709                     | U-BOLT: pivot, 3/4" - 10238 (23379)  | ea                        | 4                               | *                                       | 1    | 2     | 3      | 4                   | 7           |
| X1 O   |                                   | SEAT: spring assy - 10239 (23379)  | ea                        | 4                               |   |      |       |        | 4                   | 8           |
| P O  | 2510-782-4294                     | SPRING, ASSY: leaf - 10234 (23379)   | ea                        | 2                               | *                                       | *    | 1     | 1      | 4                   | 9           |
| P O  | 2510-782-4296                     | CLIP: U-bolt, springs - 10237 (23379)  | ea                        | 4                               | *                                       | *    | *     | *      | 4                   | 10          |
| P O  | 5310-019-3446                     | NUT: self-locking, U-bolt, 3/4-16NF<br>10236 (23379)                           | ea                        | 8                               | *                                       | *    | *     | *      | 4                   | 11          |
| P O  | 5310-017-0518                     | WASHER: bearing spring - 10232 (23379)   | ea                        | 16                              | *                                       | *    | *     | *      | 4                   | 12          |

## SECTION III - Continued

| REPAIR PARTS FOR ORGANIZATIONAL MAINTENANCE<br>(MIL-M-63001 B) |                                   |   |                           |                                 |   |      |       |        |                     |             |
|--|-----------------------------------|---|---------------------------|---------------------------------|---|------|-------|--------|---------------------|-------------|
| (1)<br>SMR<br>CODE   | (2)<br>FEDERAL<br>STOCK<br>NUMBER | (3)<br>DESCRIPTION  | (4)<br>UNIT<br>OF<br>MEAS | (5)<br>QTY<br>INC<br>IN<br>UNIT | (6)<br>15-DAY ORG<br>MAINT<br>ALLOWANCE |      |       |        | (7)<br>ILLUSTRATION |             |
|  |                                   |   |                           |                                 | (a)                                     | (b)  | (c)   | (d)    | (a)                 | (b)         |
|  |                                   |   |                           |                                 | 1-5                                     | 6-20 | 21-50 | 51-100 | FIGURE<br>NO.       | ITEM<br>NO. |
|  |                                   | GROUP 18 - FRAME  |                           |                                 |   |      |       |        |                     |             |
|  |                                   | 1812 - TRAILER ATTACHING PARTS (FIG. 5)   |                           |                                 |   |      |       |        |                     |             |
| P O  | 5306-880-9785                     | BOLT: 3/4-10NC x 5, hex head w/nut & washer - 10160 (23379)                     | ea                        | 2                               | *                                       | *    | *     | *      | 5                   | 1           |
| X1 O   |                                   | CLEVIS ASSY: MHT - 10627 (23379)  | ea                        | 1                               |   |      |       |        | 5                   | 2           |
| X1 O   |                                   | HANDLE ASSY: 10177 (23379)  | ea                        | 1                               |   |      |       |        | 5                   | 3           |
| P O  | 5315-298-1499                     | PIN: cotter, 1/8 x 2 - 10159 (23379)  | ea                        | 1                               | *                                       | *    | *     | *      | 5                   | 4           |
| X1 O   |                                   | FRAME: 10176 (23379)  | ea                        | 1                               |   |      |       |        | 5                   | 5           |
| P O  | 2530-921-7308                     | PLATFORM LATCH ASSY: 10175 (23379)  | ea                        | 1                               | *                                       | *    | *     | *      | 5                   | 6           |
| P O  | 2530-921-7306                     | STAND: long tongue - 10173 (23379)  | ea                        | 1                               | *                                       | *    | *     | *      | 5                   | 7           |
|  |                                   | GROUP 22 - BODY, CHASSIS AND ACCESSORY ITEMS                                    |                           |                                 |   |      |       |        |                     |             |
|  |                                   | 2202 -ACCESSORY ITEMS (FIG. 1)  |                           |                                 |   |      |       |        |                     |             |
| P O  | 9905-202-3639                     | REFLECTOR: indicating, clearance, amber-MS35387-2 (96906)                       | ea                        | 2                               | *                                       | *    | *     | *      | 1                   | 11          |
| P O  | 9905-202-2795                     | REFLECTOR: indicating, clearance, red-MS35387-1 (96906)                         | ea                        | 4                               | *                                       | *    | *     | *      | 1                   | 12          |
|  |                                   | SCREW: 1/4-28NF x 3/8 lg, hex (slot), washer face - 10615 (23379)               | ea                        | 12                              |   |      |       |        | 1                   | 13          |
|  |                                   | GROUP 24 - HYDRAULIC LIFT COMPONENTS  |                           |                                 |   |      |       |        |                     |             |
|  |                                   | 2404 - HYDRAULIC TILT CYLINDER (FIG. 6)   |                           |                                 |   |      |       |        |                     |             |
|  |                                   | BOLT: gland, 3/8-16NC x 1-1/4, w/nut  | ea                        | 2                               |   |      |       |        | 6                   | 2           |
| P O  | 2590-782-4297                     | GLAND: hydraulic tilt cylinder - 10171 (23379)                                  | ea                        | 1                               | *                                       | *    | *     | *      | 6                   | 3           |
| P O  | 2530-921-7239                     | PACKING: hydraulic tilt cylinder (included shaft dia. with order) 10168 (23379) | ea                        | 1                               | *                                       | *    | *     | *      | 6                   | 4           |
|  |                                   | PLUG. filler, 1/4 NPT pipe - 10167 (23379)                                      | ea                        | 1                               |   |      |       |        | 6                   | 5           |
| P O  | 5306-940-3238                     | BOLT: 1/2-13NC, 2-3/4 hex hd, w/2 nuts 10188 (23379)                            | ea                        | 2                               | *                                       | *    | *     | *      | 6                   | 6           |
| X1 O   |                                   | BRACKET: shaft mounting - 10170 (23379)   | ea                        | 2                               |   |      |       |        | 6                   | 7           |
| X1 O   |                                   | BRACKET: shaft mounting, MHT - 10638 (23379)                                    | ea                        | 2                               |   |      |       |        | 6                   | 8           |

## SECTION IV

REPAIR PARTS FOR DIRECT SUPPORT, GENERAL SUPPORT AND DEPOT MAINTENANCE  
(MIL-M-63001 B)

| (1)<br>SMR<br>CODE | (2)<br>FEDERAL<br>STOCK<br>NUMBER | (3)<br><br>DESCRIPTION   | (4)<br>UNIT<br>OF<br>MEAS | (5)<br>QTY<br>INC<br>IN<br>UNIT | (6)<br>30-DAY DS<br>MAINT<br>ALLOWANCE |              |               | (7)<br>30-DAY GS<br>MAINT<br>ALLOWANCE |              |               | (8)<br>1-YR<br>ALW<br>PER<br>100<br>EQUIP<br>CNTGCT | (9)<br>ILLUSTRATION  |                    |
|--------------------|-----------------------------------|--|---------------------------|---------------------------------|--|--------------|---------------|--|--------------|---------------|---|----------------------|--------------------|
|                    |                                   |  |                           |                                 | (a)<br>1-20                            | (b)<br>21-50 | (c)<br>51-100 | (a)<br>1-20                            | (b)<br>21-50 | (c)<br>51-100 |   | (a)<br>FIGURE<br>NO. | (b)<br>ITEM<br>NO. |
|                    |                                   | GROUP 06 - ELECTRICAL SYSTEM   |                           |                                 |  |              |               |  |              |               |   |                      |                    |
|                    |                                   | 0609 - LIGHTS (Fig. 1)   |                           |                                 |  |              |               |  |              |               |   |                      |                    |
| P O                | 6220-577-3434                     | LIGHT: clearance, service, amber - MS35423-1 (96906)                 | ea                        | 2                               | *                                      | *            | 1             | *                                      | *            | 1             |   | 1                    | 1                  |
| P O                | 6220-726-1916                     | LIGHT: clearance, service, red - MS35423-2 (96906)                   | ea                        | 2                               | *                                      | *            | 1             | *                                      | *            | 1             |   | 1                    | 2                  |
| P O                | 6220-577-3435                     | LIGHT: clearance, blackout, amber - MS35424-1 (96906)                | ea                        | 2                               | *                                      | *            | 1             | *                                      | *            | 1             |   | 1                    | 3                  |
| P O                | 6220-727-3288                     | LIGHT: clearance, blackout, red - MS35424-2 (96906)                  | ea                        | 2                               | *                                      | *            | 1             | *                                      | *            | 1             |   | 1                    | 4                  |
| P O                | 5305-984-6210                     | SCREW: 8-32 x 3/8 lg, hex (slot), washer face - 10611 (23379)        | ea                        | 32                              | *                                      | *            | 1             | *                                      | *            | 1             |   | 1                    | 5                  |
| P O                | 6220-669-5623                     | LIGHT: service stop, service tail, blackout tail - MS51329-1 (96906) | ea                        | 2                               | *                                      | *            | 1             | *                                      | *            | 1             |   | 1                    | 6                  |
| P O                | 5306-045-1976                     | CAPSCREW: w/lockwasher, 3/8-16NC x 3/4 lg - 10612 (23379)            | ea                        | 4                               | *                                      | *            | 1             | *                                      | *            | 1             |   | 1                    | 7                  |
| P O                | 6220-846-9745                     | STOPLIGHT: vehicular blackout - MS51302-1 (96906)                    | ea                        | 1                               | *                                      | *            | 1             | *                                      | *            | 1             |   | 1                    | 8                  |
| P O                | 2590-782-4257                     | PIN: stabilizing, electrical light system - 10613 (23379)            | ea                        | 1                               | *                                      | *            | 1             | *                                      | *            | 1             |   | 1                    | 9                  |
| P O                | 5306-880-9784                     | CAPSCREW: 5/16-24NF x 3/4 lg, w/ lockwasher - 10614 (23379)          | ea                        | 1                               | *                                      | *            | 1             | *                                      | *            | 1             |   | 1                    | 10                 |
|                    |                                   | CONNECTOR: receptacle, w/gasket - MS75021 (96906)                    | ea                        | 1                               |  |              |               |  |              |               |   | 1                    | 14                 |
| P O                | 6240-019-0877                     | LAMP, INCANDESCENT: MS15570-1251 (96906) (Non-illustrated)           | ea                        | 8                               | 2                                      | 5            | 8             | 2                                      | 5            | 8             |   |                      |                    |
| P O                | 6240-044-6914                     | LAMP, INCANDESCENT: MS35478-1683 (96906) (Non-illustrated)           | ea                        | 8                               | 2                                      | 5            | 8             | 2                                      | 5            | 8             |   |                      |                    |
|                    |                                   | 0613 - CHASSIS WIRING (Fig. 1)                                       |                           |                                 |  |              |               |  |              |               |   |                      |                    |
| P O                | 2590-782-4262                     | COVER: receptacle, Bendix - 10616 (96906)                            | ea                        | 1                               | *                                      | *            | 1             | *                                      | *            | 1             |   | 1                    | 15                 |
| P O                | 2590-782-4261                     | COVER ASSY: front corners (screws & gaskets) - 10617 (23379)         | ea                        | 2                               | *                                      | *            | 1             | *                                      | *            | 1             |   | 1                    | 16                 |
| P O                | 2590-782-4260                     | COVER ASSY: main (screw & gasket) - 10618 (23379)                    | ea                        | 1                               | *                                      | *            | 1             | *                                      | *            | 1             |   | 1                    | 17                 |
| P O                | 2590-782-4259                     | COVER ASSY: brake (screw & gasket) 10619 (23379)                     | ea                        | 1                               | *                                      | *            | 1             | *                                      | *            | 1             |   | 1                    | 18                 |
| P O                | 2590-782-4258                     | CONNECTOR ASSY: shells, sleeve & washer 10620 (23379)                | ea                        | 4                               | *                                      | *            | 1             | *                                      | *            | 1             |   | 1                    | 19                 |
| P O                | 2590-772-8813                     | HARNESS ASSY: intervehicular - 7728813 (Non-illustrated)             | ea                        | 1                               | 2                                      | 2            | 3             | 2                                      | 2            | 3             |   |                      |                    |

## SECTION IV - Continued

| REPAIR PARTS FOR DIRECT SUPPORT, GENERAL SUPPORT AND DEPOT MAINTENANCE<br>(MIL-M-63001 B) |                                   |  |                           |                                 |  |       |        |  |       |        |  |                      |                    |
|---|-----------------------------------|--|---------------------------|---------------------------------|--|-------|--------|--|-------|--------|--|----------------------|--------------------|
| (1)<br>SMR<br>CODE  | (2)<br>FEDERAL<br>STOCK<br>NUMBER | (3)<br><br>DESCRIPTION   | (4)<br>UNIT<br>OF<br>MEAS | (5)<br>QTY<br>INC<br>IN<br>UNIT | (6)<br>30-DAY DS<br>MAINT<br>ALLOWANCE |       |        | (7)<br>30-DAY GS<br>MAINT<br>ALLOWANCE |       |        | (8)<br>1-YR<br>ALW<br>PER<br>100<br>EQUIP<br>CNTGCTY | (9)<br>ILLUSTRATION  |                    |
|   |                                   |  |                           |                                 | (a)                                    | (b)   | (c)    | (a)                                    | (b)   | (c)    |  | (a)<br>FIGURE<br>NO. | (b)<br>ITEM<br>NO. |
|   |                                   |  |                           |                                 | 1-20                                   | 21-50 | 51-100 | 1-20                                   | 21-50 | 51-100 |  |                      |                    |
|   |                                   | GROUP 11 - AXLES<br><br>1100 - FRONT AND REAR AXLES (Fig. 4)   |                           |                                 |  |       |        |  |       |        |  |                      |                    |
| P F   | 5305-880-9773                     | CAPSCREW: 1/2-20NF x 1-3/4 HT, part of wheel assy - 10231 (23379) (Group 1100)   | ea                        | 16                              | 1                                      | 2     | 3      | 1                                      | 2     | 3      |  | 4                    | 27                 |
| P F   | 2530-782-4270                     | AXLE ASSY: w/brake flange and axle spring - 10629 (23379) (Group 1100)   | ea                        | 2                               | *                                      | 1     | 1      | *                                      | 1     | 1      |  | 4                    | 28                 |
|   |                                   | GROUP 12 - BRAKES<br><br>1201 - PARKING BRAKE LEVER AND CABLE ASSEMBLY (Fig. 2)  |                           |                                 |  |       |        |  |       |        |  |                      |                    |
| P O   | 2530-782-4269                     | LEVER: manual control, hand brake - 10600 (23379)  | ea                        | 1                               | *                                      | *     | 1      | *                                      | *     | 1      |  | 2                    | 1                  |
| P O   |                                   | PIN: w/flatwasher and cotter key - 10604 (23379)   | ea                        | 1                               | *                                      | *     | 1      | *                                      | *     | 1      |  | 2                    | 2                  |
| P O   | 2530-782-4283                     | SPACER: sleeve, broke cable - 10607 (23379)  | ea                        | 2                               | *                                      | *     | 1      | *                                      | *     | 1      |  | 2                    | 3                  |
| P O   | 5305-880-9772                     | CAPSCREW ASSY: 5/16-18NC x 1-5/8, w/nut & lockwasher - 10603 (23379)   | ea                        | 3                               | *                                      | *     | 1      | *                                      | *     | 1      |  | 2                    | 4                  |
| P O   | 2530-169-5786                     | PIN: w/cotter key - 10608 (23379)  | ea                        | 2                               | *                                      | *     | 1      | *                                      | *     | 1      |  | 2                    | 5                  |
| P O   | 2530-782-4266                     | CABLE ASSY: left hand brake - 10602 (23379)  | ea                        | 1                               | *                                      | *     | 1      | *                                      | *     | 1      |  | 2                    | 6                  |
| P O   | 2530-782-4268                     | CABLE ASSY: right hand brake - 10601 (23379)   | ea                        | 1                               | *                                      | *     | 1      | *                                      | *     | 1      |  | 2                    | 7                  |
| P O   | 2530-782-4282                     | CLAMP: brake cable -10606 (23379)  | ea                        | 2                               | *                                      | *     | 1      | *                                      | *     | 1      |  | 2                    | 8                  |
| P O   | 2530-782-4271                     | SPACER: sleeve, brake system - 10605 (23379)   | ea                        | 1                               | *                                      | *     | 1      | *                                      | *     | 1      |  | 2                    | 9                  |
|   |                                   | 1202 - BRAKE ASSEMBLY (Fig. 3)   |                           |                                 |  |       |        |  |       |        |  |                      |                    |
| P O   | 2530-782-4312                     | PARTS KIT: brake springs - 56214 (23379)<br><br>COMPOSED OF:<br>2 - 44934 adjusting screw spring<br>4 - 45424 retractor spring | ea                        | 1                               | 1                                      | 1     | 2      | 1                                      | 1     | 2      |  | 3                    | 1                  |
| P O   | 2530-782-4320                     | PLATE shoe guide, brake system - 46424 (23379)   | ea                        | 1                               | *                                      | *     | 1      | *                                      | *     | 1      |  | 3                    | 2                  |
| X1 O  |                                   | PLATE: backing, and anchor assy - r. h. 48754 (23379)  | ea                        | 1                               |  |       |        |  |       |        |  | 3                    | 3                  |
| X1 O  |                                   | PLATE: backing, and anchor assy - l. h. 48755 (23379)  | ea                        | 1                               |  |       |        |  |       |        |  | 3                    | 4                  |
|   | 5935-782-8661                     | CONNECTOR ASSY: magnet lead - 48770 (23379)  | ea                        | 1                               | *                                      | *     | 1      | *                                      | *     | 1      |  | 3                    | 5                  |
| P O   | 3120-880-3066                     | BEARING: sleeve, oilite-42680 (23379)  | ea                        | 1                               | 1                                      | 2     | 3      | 1                                      | 2     | 3      |  | 3                    | 6                  |

## SECTION IV - Continued

| REPAIR PARTS FOR DIRECT SUPPORT, GENERAL SUPPORT AND DEPOT MAINTENANCE<br>(MIL-M-63001 B) |                                   |  |                           |                                 |  |              |               |  |              |               |   |                      |                    |
|---|-----------------------------------|--|---------------------------|---------------------------------|--|--------------|---------------|--|--------------|---------------|---|----------------------|--------------------|
| (1)<br>SMR<br>CODE  | (2)<br>FEDERAL<br>STOCK<br>NUMBER | (3)<br><br>DESCRIPTION   | (4)<br>UNIT<br>OF<br>MEAS | (5)<br>QTY<br>INC<br>IN<br>UNIT | (6)<br>30-DAY DS<br>MAINT<br>ALLOWANCE |              |               | (7)<br>30-DAY GS<br>MAINT<br>ALLOWANCE |              |               | (8)<br>1-YR<br>ALW<br>PER<br>100<br>EQUIP<br>CNTGCT | (9)<br>ILLUSTRATION  |                    |
|   |                                   |  |                           |                                 | (a)<br>1-20                            | (b)<br>21-50 | (c)<br>51-100 | (a)<br>1-20                            | (b)<br>21-50 | (c)<br>51-100 |   | (a)<br>FIGURE<br>NO. | (b)<br>ITEM<br>NO. |
|   |                                   | 1202 - BRAKE ASSEMBLY<br>(Fig. 3) - Continued  |                           |                                 |  |              |               |  |              |               |   |                      |                    |
| P O   | 2530-782-4284                     | COVER: brake adjusting slot- 58921<br>(23379)  | ea                        | 1                               | *                                      | *            | 1             | *                                      | *            | 1             |   | 3                    | 7                  |
| P O   | 2530-782-4277                     | PARTS KIT: magnet, l. h. -56277 (23379)<br>COMPOSED OF:<br>1 - 48762 magnet<br>1 - 43747 retaining ring<br>1 - 46264 spring<br>2 - 49789 adaptor | ea                        | 1                               | 1                                      | 2            | 2             | 1                                      | 1            | 2             |   | 3                    | 8                  |
| P O   | 2530-782-4276                     | PARTS KIT: magnet, r. h. -56222 (23379)<br>COMPOSED OF:<br>1 - 48763 magnet<br>1 - 43747 retaining ring<br>1 - 46264 spring<br>1 - 49789 adaptor | ea                        | 1                               | 1                                      | 2            | 2             | 1                                      | 2            | 2             |   | 3                    | 9                  |
| P O   | 2530-782-4313                     | BRAKE SHOE SET: internally actuated -<br>56210 (23379)<br>COMPOSED OF:<br>1 - 46397 shoe & lining primary<br>1 - 46398 shoe & lining secondary   | ea                        | 1                               | 2                                      | 5            | 8             | 2                                      | 5            | 8             |   | 3                    | 10                 |
| P O   | 5305-880-9747                     | SCREW ASSY: adjusting, brake - 58929<br>(23379)  | ea                        | 1                               | *                                      | *            | 1             | *                                      | *            | 1             |   | 3                    | 11                 |
| P O   | 2530-782-4286                     | ACCESSORY KIT: brake shoe - 56266<br>(23379)<br>COMPOSED OF:<br>2 - 30687 pin<br>2 - 30688 spring<br>4 - 30690 cup                               | ea                        | 1                               | 1                                      | 2            | 2             | 1                                      | 2            | 2             |   | 3                    | 12                 |
| P O   | 2530-782-4279                     | ACTUATING ASSY: magnet and lever, l. h.,<br>12 volt (green loom) - 48761 (23379)   | ea                        | 1                               | *                                      | *            | 1             | *                                      | *            | 1             |   | 3                    | 13                 |
| P O   | 2530-782-4278                     | ACTUATING ASSY: magnet and lever, r. h.,<br>12 volt (green loom) - 48760 (23379)   | ea                        | 1                               | *                                      | *            | 1             | *                                      | *            | 1             |   | 3                    | 14                 |
| P O   | 2530-782-4273                     | CLAM: wire - 30847 (23379)   | ea                        | 1                               | *                                      | *            | 1             | *                                      | *            | 1             |   | 3                    | 15                 |
| P O   | 2590-169-5728                     | PLATE: armature- 30944 (23379)<br>(Non-illustrated)  | ea                        | 1                               | *                                      | *            | 1             | *                                      | *            | 1             |   |                      |                    |
| P O   | 2530-782-4267                     | BRAKE ASSY- r. h., 12 volt - 48960 (23379)<br>(Non- illustrated)   | ea                        | 1                               | *                                      | *            | 1             | *                                      | *            | 1             |   |                      |                    |
| P O   | 2530-782-4285                     | BRAKE ASSY: l. h., 12 volt- 48961 (23379)<br>(Non-illustrated)   | ea                        | 1                               | *                                      | *            | 1             | *                                      | *            | 1             |   |                      |                    |
|   |                                   | GROUP 13 - WHEELS AND TIRES<br>1311 -WHEELS (Fig. 4)   |                           |                                 |  |              |               |  |              |               |   |                      |                    |
| P O   | 5307-017-0534                     | STUD: wheel, component of wheel assy -<br>10632 (23379)  | ea                        | 24                              | *                                      | *            | 1             | *                                      | *            | 1             |   | 4                    |                    |
| P O   | 5310-017-0512                     | WASHER: stud wheel, component of wheel assy-<br>10628 (23379)  | ea                        | 24                              | *                                      | *            | 1             | *                                      | *            | 1             |   | 4                    | 15                 |



## SECTION IV - Continued

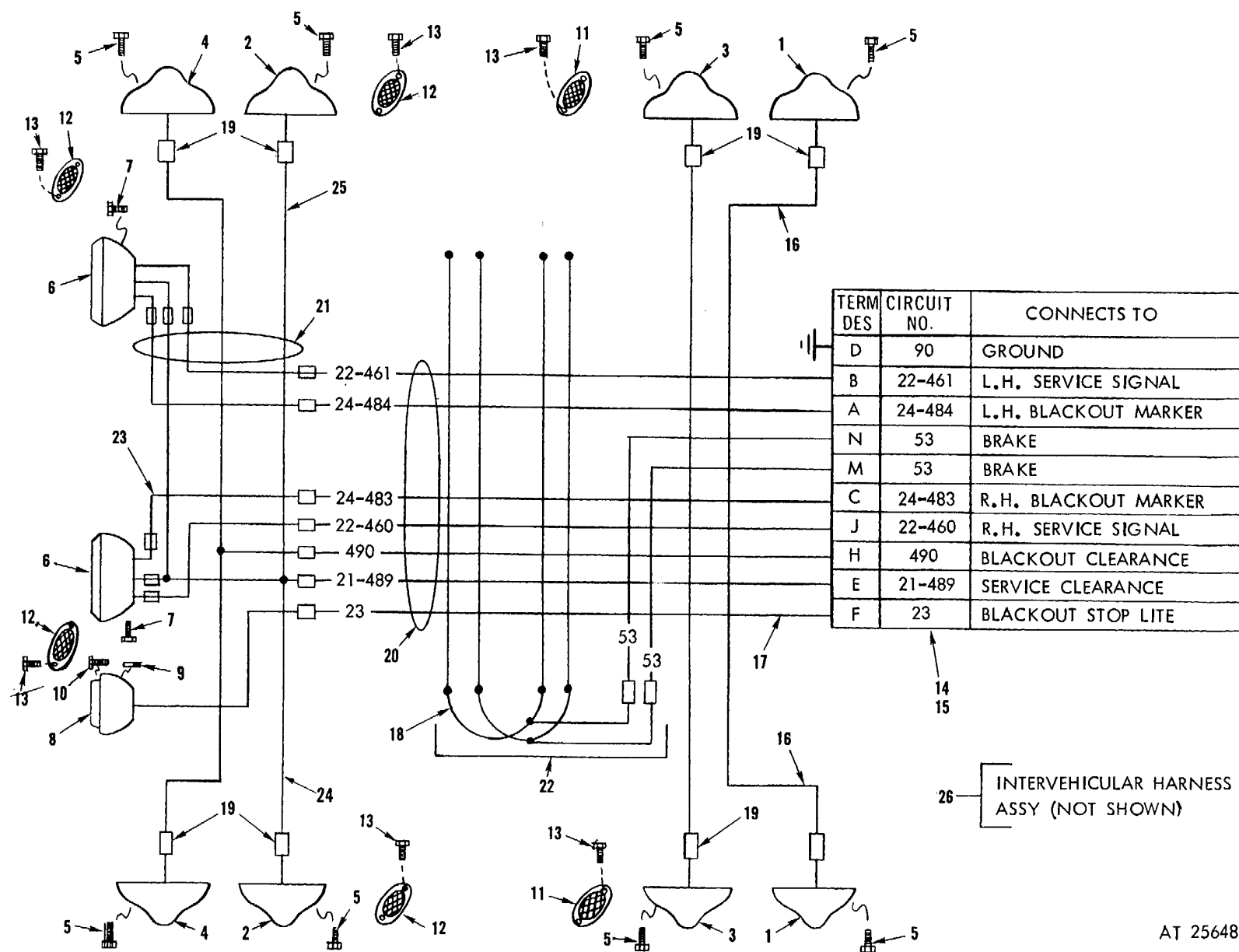
| REPAIR PARTS FOR DIRECT SUPPORT, GENERAL SUPPORT AND DEPOT MAINTENANCE<br>(MIL-M-63001 B) |                                   |   |                           |                                 |  |              |               |  |              |               |   |                      |                    |
|---|-----------------------------------|---|---------------------------|---------------------------------|--|--------------|---------------|--|--------------|---------------|---|----------------------|--------------------|
| (1)<br>SMR<br>CODE  | (2)<br>FEDERAL<br>STOCK<br>NUMBER | (3)<br><br>DESCRIPTION  | (4)<br>UNIT<br>OF<br>MEAS | (5)<br>QTY<br>INC<br>IN<br>UNIT | (6)<br>30-DAY DS<br>MAINT<br>ALLOWANCE |              |               | (7)<br>30-DAY GS<br>MAINT<br>ALLOWANCE |              |               | (8)<br>1-YR<br>ALW<br>PER<br>100<br>EQUIP<br>CNTGCT | (9)<br>ILLUSTRATION  |                    |
|   |                                   |   |                           |                                 | (a)<br>1-20                            | (b)<br>21-50 | (c)<br>51-100 | (a)<br>1-20                            | (b)<br>21-50 | (c)<br>51-100 |   | (a)<br>FIGURE<br>NO. | (b)<br>ITEM<br>NO. |
|   |                                   | 1311 - WHEELS (Fig. 4) - Continued  |                           |                                 |  |              |               |  |              |               |   |                      |                    |
| P O   | 5315-234-1664                     | PIN, COTTER: 3/16 x 1-1/2 in. wheel assy 10636 (23379) MS24665 (96906)    | ea                        | 4                               | *                                      | *            | 1             | *                                      | *            | 1             |   | 4                    | 16                 |
| P O   | 2530-782-4314                     | CAP: grease, wheel, part of wheel assy 10637 (23379)                      | ea                        | 4                               | *                                      | *            | 1             | *                                      | *            | 1             |   | 4                    | 17                 |
| P O   | 5310-017-0508                     | NUT: slotted, hexagon, spindle, part of wheel assy - 10247 (23379)        | ea                        | 4                               | *                                      | *            | 1             | *                                      | *            | 1             |   | 4                    | 18                 |
| P O   | 5310-017-0511                     | WASHER: spindle, wheel, part of wheel assy - 10635 (23379)                | ea                        | 4                               | *                                      | *            | 1             | *                                      | *            | 1             |   | 4                    | 19                 |
| P O   | 3110-100-3541                     | CONE AND ROLLERS: tapered roller bearing, wheel assy - 10218 (23379)      | ea                        | 8                               | 1                                      | 2            | 2             | 1                                      | 2            | 2             |   | 4                    | 20                 |
| P O   | 3110-100-0544                     | CUP: tapered roller bearing, inner or outer, wheel assy - 10219 (23379).  | ea                        | 8                               | 1                                      | 2            | 2             | 1                                      | 2            | 2             |   | 4                    | 21                 |
| P O   | 2530-782-4316                     | LUG NUT: wheel - 10634 (23379)  | ea                        | 24                              | *                                      | *            | 1             | *                                      | *            | 1             |   | 4                    | 22                 |
| P O   | 2530-782-4319                     | WHEEL: pneumatic, tire- 10633 (23379)                                     | ea                        | 4                               | *                                      | *            | 1             | *                                      | *            | 1             |   | 4                    | 23                 |
| P F   | 2530-782-4317                     | HUB: w/cups and studs, brake system - 10631 (23379)                       | ea                        | 4                               | *                                      | *            | 1             | *                                      | *            | 1             |   | 4                    | 24                 |
| P O   | 2530-782-4318                     | DRUM: brake - 10630(23379)  | ea                        | 4                               | *                                      | *            | 1             | *                                      | *            | 1             |   | 4                    | 25                 |
| P O   | 2530-782-4315                     | PACKING: preformed, grease retaining, part of wheel assy - 10217 (23379)  | ea                        | 4                               | 2                                      | 3            | 5             | 2                                      | 3            | 5             |   | 4                    | 26                 |
|   |                                   | 1313 - TIRES AND TUBES (NON-ILLUSTRATED)                                  |                           |                                 |  |              |               |  |              |               |   |                      |                    |
| P O   | 2640-052-0944                     | CAP, TIRE VALVE: MS51375-1 (96906)  | ea                        | 4                               | 5                                      | 9            | 15            | 5                                      | 9            | 15            |   |                      |                    |
| P F   | 2610-294-4944                     | TIRE, PNEUMATIC: MS35390-1(96906)   | ea                        | 4                               | 11                                     | 23           | 42            | 11                                     | 23           | 42            |   |                      |                    |
| P F   | 2610-269-7329                     | TUBE, INNER, PNEUMATIC TIRE: MS35392-22 (96906)                           | ea                        | 4                               | 9                                      | 18           | 32            | 9                                      | 18           | 32            |   |                      |                    |
| P F   | 2640-810-5861                     | VALVE CORE, PNEUMATIC TIRE: MS51377-1 (96906)                             | ea                        | 4                               | 5                                      | 9            | 15            | 5                                      | 9            | 15            |   |                      |                    |
|   |                                   | GROUP 16 - SPRINGS AND SHOCK ABSORBERS                                    |                           |                                 |  |              |               |  |              |               |   |                      |                    |
|   |                                   | 1601-SPRINGS (Fig. 4)   |                           |                                 |  |              |               |  |              |               |   |                      |                    |
| P O   | 5315-234-1673                     | PIN: cotter, 5/16 x 3 - 10303 (23379)                                     | ea                        | 2                               | *                                      | *            | 1             | *                                      | *            | 1             |   | 4                    | 1                  |
| X1 O  |                                   | HOUSING: pivot assembly- 10330 (23379)                                    | ea                        | 2                               |  |              |               |  |              |               |   | 4                    | 2                  |
| X1 O  |                                   | CAPSCREW ASSY: 3/4x 10NC x 2, pivot housing- 10243 (23379)                | ea                        | 8                               |  |              |               |  |              |               |   | 4                    | 3                  |
| P O   | 4730-013-8105                     | FITTING: grease-10242 (23379)   | ea                        | 2                               | *                                      | *            | 1             | *                                      | *            | 1             |   | 4                    | 4                  |
| P O   | 5305-880-9763                     | CAPSCREW: w/lockwasher, 1/2 x 13NC x 7/8, h. t. pivot shaft-10108 (23379) | ea                        | 4                               | *                                      | *            | 1             | *                                      | *            | 1             |   | 4                    | 5                  |
| P O   | 2510-782-4295                     | SHAFT: pivot assembly - 10304 (23379)                                     | ea                        | 2                               | *                                      | *            | 1             | *                                      | *            | 1             |   | 4                    | 6                  |

## SECTION IV - Continued

| REPAIR PARTS FOR DIRECT SUPPORT, GENERAL SUPPORT AND DEPOT MAINTENANCE<br>(MIL-M-63001 B) |                                   |   |                           |                                 |  |              |               |  |              |               |   |                      |                    |
|---|-----------------------------------|---|---------------------------|---------------------------------|--|--------------|---------------|--|--------------|---------------|---|----------------------|--------------------|
| (1)<br>SMR<br>CODE  | (2)<br>FEDERAL<br>STOCK<br>NUMBER | (3)<br><br>DESCRIPTION  | (4)<br>UNIT<br>OF<br>MEAS | (5)<br>QTY<br>INC<br>IN<br>UNIT | (6)<br>30-DAY DS<br>MAINT<br>ALLOWANCE |              |               | (7)<br>30-DAY GS<br>MAINT<br>ALLOWANCE |              |               | (8)<br>1-YR<br>ALW<br>PER<br>100<br>EQUIP<br>CNTGCT | (9)<br>ILLUSTRATION  |                    |
|   |                                   |   |                           |                                 | (a)<br>1-20                            | (b)<br>21-50 | (c)<br>51-100 | (a)<br>1-20                            | (b)<br>21-50 | (c)<br>51-100 |   | (a)<br>FIGURE<br>NO. | (b)<br>ITEM<br>NO. |
|   |                                   | 1601 - SPRINGS (Fig. 4) - Continued   |                           |                                 |  |              |               |  |              |               |   |                      |                    |
| P O   | 5306-880-9709                     | U-BOLT: pivot, 3/4"- 10238 (23379)  | ea                        | 4                               | 1                                      | 2            | 4             | 1                                      | 2            | 4             |   | 4                    | 7                  |
| X1 O  |                                   | SEAT: spring assy - 10239 (23379)   | ea                        | 4                               |  |              |               |  |              |               |   | 4                    | 8                  |
| P O   | 2510-782-4294                     | SPRING, ASSY: leaf- 10234 (23379)   | ea                        | 2                               | 1                                      | 2            | 3             | 1                                      | 2            | 3             |   | 4                    | 9                  |
| P O   | 2510-782-4296                     | CLIP: U-bolt, spring - 10237 (23379)  | ea                        | 4                               | *                                      | *            | 1             | *                                      | *            | 1             |   | 4                    | 10                 |
| P O   | 5310-019-3446                     | NUT: self-locking, U-bolt, 3/4-16NF 10236 (23379)                             | ea                        | 8                               | *                                      | *            | 1             | *                                      | *            | 1             |   | 4                    | 11                 |
| P O   | 5310-017-0518                     | WASHER: bearing spring - 10232 (23379)  | ea                        | 16                              | *                                      | *            | 1             | *                                      | *            | 1             |   | 4                    | 12                 |
|   |                                   | GROUP 18- FRAME   |                           |                                 |  |              |               |  |              |               |   |                      |                    |
|   |                                   | 1812 - TRAILER ATTACHING<br>PARTS (Fig. 5)                                    |                           |                                 |  |              |               |  |              |               |   |                      |                    |
| P O   | 5306-880-9785                     | BOLT: 3/4-10NC x 5, hex head w/nut & washer - 10160 (23379)                   | ea                        | 2                               | *                                      | *            | 1             | *                                      | *            | 1             |   | 5                    | 1                  |
| X1 O  |                                   | CLEVIS ASSY: MHT - 10627 (23379)  | ea                        | 1                               |  |              |               |  |              |               |   | 5                    | 2                  |
| X1 O  |                                   | HANDLE ASSY: 10177 (23379)  | ea                        | 1                               |  |              |               |  |              |               |   | 5                    | 3                  |
| P O   | 5315-298-1499                     | PIN: cotter, 1/8 x 2 - 10159 (23379)  | ea                        | 1                               | *                                      | *            | 1             | *                                      | *            | 1             |   | 5                    | 4                  |
| X1 O  |                                   | FRAME: 10176 (23379)  | ea                        | 1                               |  |              |               |  |              |               |   | 5                    | 5                  |
| P O   | 2530-921-7308                     | PLATFORM LATCH ASSY: 10175 (23379)  | ea                        | 1                               | *                                      | *            | 1             | *                                      | *            | 1             |   | 5                    | 6                  |
| P O   | 2530-921-7306                     | STAND: long tongue - 10173 (23379)  | ea                        | 1                               | *                                      | *            | 1             | *                                      | *            | 1             |   | 5                    | 7                  |
|   |                                   | GROUP 22 - BODY, CHASSIS<br>AND ACCESSORY ITEMS                               |                           |                                 |  |              |               |  |              |               |   |                      |                    |
|   |                                   | 2202 - ACCESSORY ITEMS (Fig. 1)   |                           |                                 |  |              |               |  |              |               |   |                      |                    |
| P O   | 9905-202-3639                     | REFLECTOR: indicating, clearance, amber- MS35387-2 (96906)                    | ea                        | 2                               | *                                      | *            | 1             | *                                      | *            | 1             |   | 1                    | 11                 |
| P O   | 9905-202-2795                     | REFLECTOR: indicating, clearance, red - MS35387-1 (96906)                     | ea                        | 4                               | *                                      | *            | 1             | *                                      | *            | 1             |   | 1                    | 12                 |
|   |                                   | SCREW: 1/4-28NF x 3/8 lg, hex (slot), washer face - 10615 (23379)             | ea                        | 12                              |  |              |               |  |              |               |   | 1                    | 13                 |
|   |                                   | GROUP 24 - HYDRAULIC LIFT COMPONENTS  |                           |                                 |  |              |               |  |              |               |   |                      |                    |
|   |                                   | 2404 - HYDRAULIC TILT CYLINDER (Fig. 6)                                       |                           |                                 |  |              |               |  |              |               |   |                      |                    |
| P F   | 2590-782-4298                     | CYLINDER: hydraulic assy - 10273 (23379)                                      | ea                        | 1                               | *                                      | *            | 1             | *                                      | *            | 1             |   | 6                    | 1                  |
|   |                                   | BOLT: gland, 3/8-16NC x 1-1/4, w/nut  | ea                        | 2                               |  |              |               |  |              |               |   | 6                    | 2                  |
| P O   | 2590-782-4297                     | GLAND: hydraulic tilt cylinder - 10171 (23379)                                | ea                        | 1                               | *                                      | *            | 1             | *                                      | *            | 1             |   | 6                    | 3                  |
| P O   | 2530-921-7239                     | PACKING: hydraulic tilt cylinder (include shaft dia. with order 10168 (23379) | ea                        | 1                               | *                                      | *            | 1             | *                                      | *            | 1             |   | 6                    | 4                  |

## SECTION IV - Continued

| REPAIR PARTS FOR DIRECT SUPPORT, GENERAL SUPPORT AND DEPOT MAINTENANCE<br>(MIL-M-63001 B) |                                   |   |                           |                                 |  |              |               |  |              |               |   |                      |                    |
|---|-----------------------------------|---|---------------------------|---------------------------------|--|--------------|---------------|--|--------------|---------------|---|----------------------|--------------------|
| (1)<br>SMR<br>CODE  | (2)<br>FEDERAL<br>STOCK<br>NUMBER | (3)<br><br>DESCRIPTION                                  | (4)<br>UNIT<br>OF<br>MEAS | (5)<br>QTY<br>INC<br>IN<br>UNIT | (6)<br>30-DAY DS<br>MAINT<br>ALLOWANCE |              |               | (7)<br>30-DAY GS<br>MAINT<br>ALLOWANCE |              |               | (8)<br>1-YR<br>ALW<br>PER<br>100<br>EQUIP<br>CNTGCY | (9)<br>ILLUSTRATION  |                    |
|   |                                   |   |                           |                                 | (a)<br>1-20                            | (b)<br>21-50 | (c)<br>51-100 | (a)<br>1-20                            | (b)<br>21-50 | (c)<br>51-100 |   | (a)<br>FIGURE<br>NO. | (b)<br>ITEM<br>NO. |
|   |                                   | 2404 - HYDRAULIC TILT CYLINDER<br>(Fig. 6) - Continued  |                           |                                 |  |              |               |  |              |               |   |                      |                    |
| P O   | 5306-940-3238                     | PLUG: filler, 1/4 NPT pipe - 10167<br>(23379)           | ea                        | 1                               |  |              |               |  |              |               |   | 6                    | 5                  |
| X1 O  |                                   | BOLT: 1/2-13NC, 2-3/4 hex hd, w/2 nuts<br>10188 (23379) | ea                        | 2                               | *                                      | *            | 1             | *                                      | *            | 1             |   | 6                    | 6                  |
| X1 O  |                                   | BRACKET mounting- 10170<br>(23379)                      | ea                        | 2                               |  |              |               |  |              |               |   | 6                    | 7                  |
| X1 O  |                                   | BRACKET shaft mounting, MHT- 10638<br>(23379)           | ea                        | 2                               |  |              |               |  |              |               |   | 6                    | 8                  |



AT 25648

Figure 1. Electrical system.

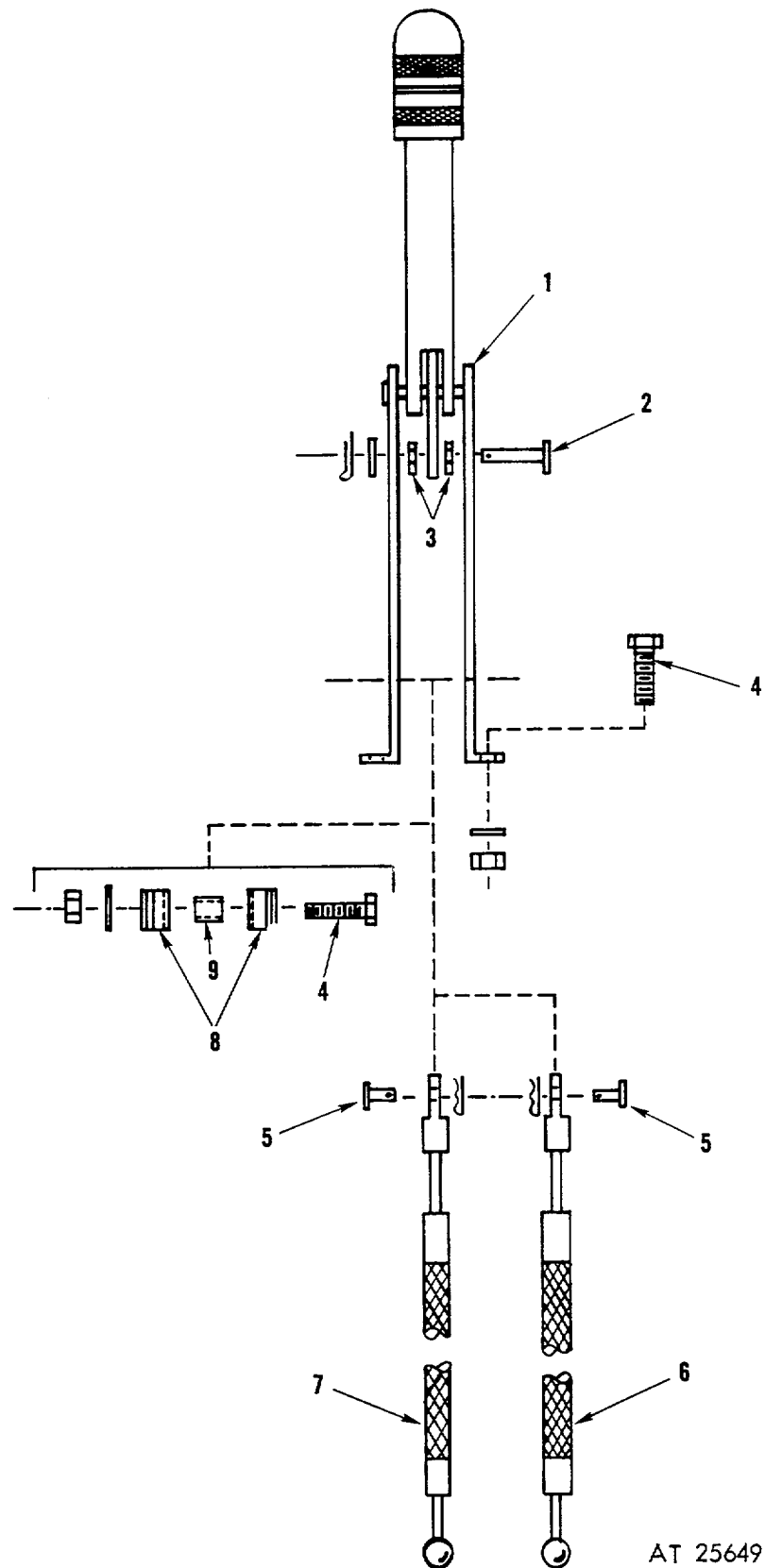
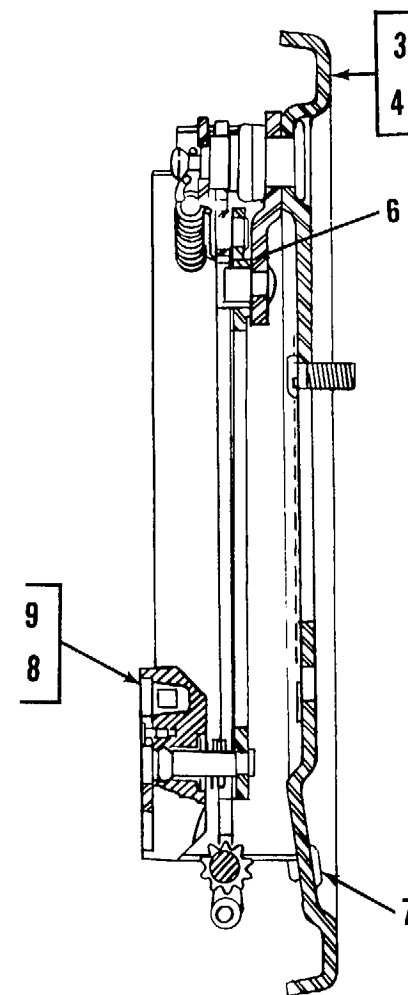
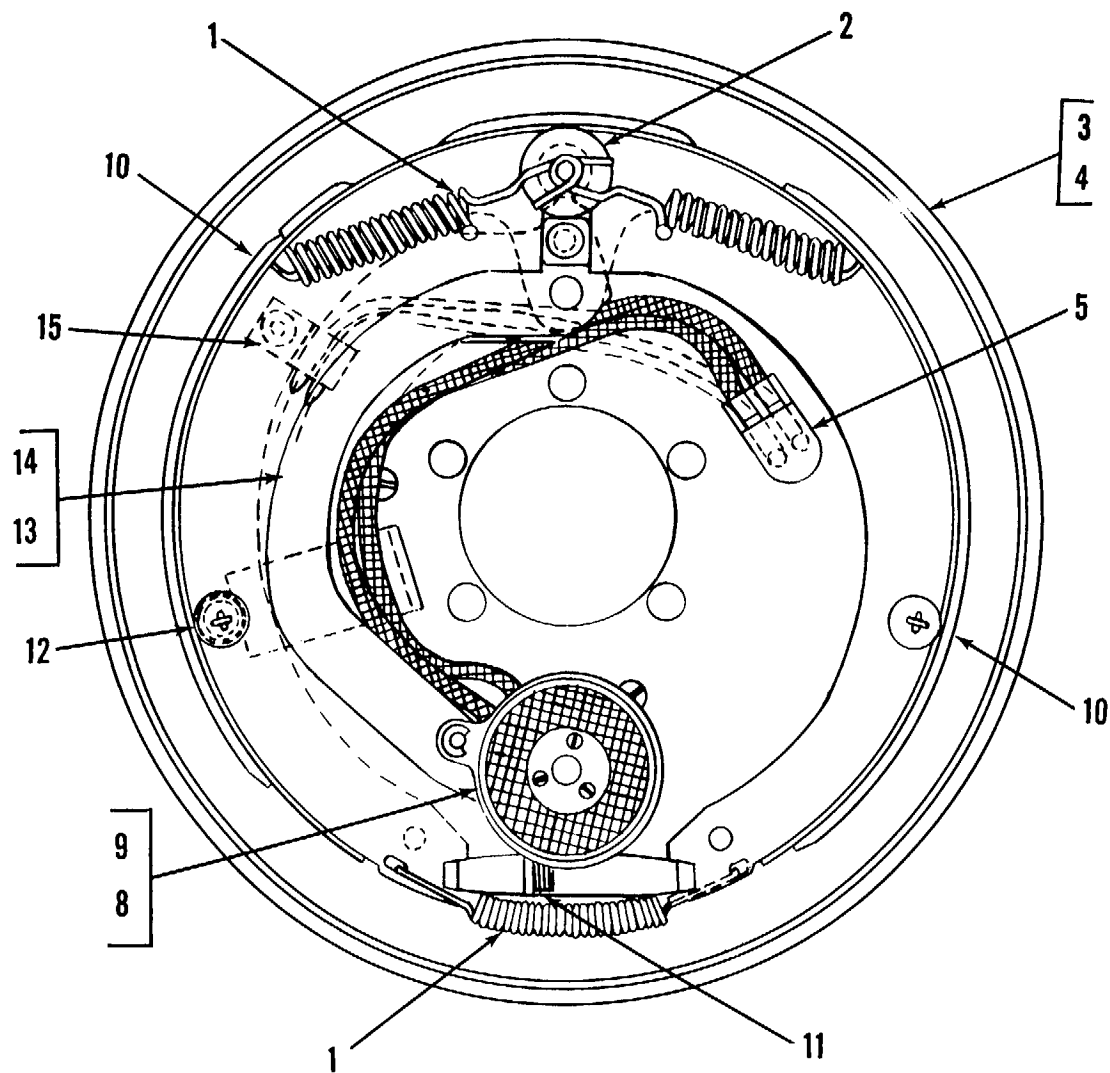
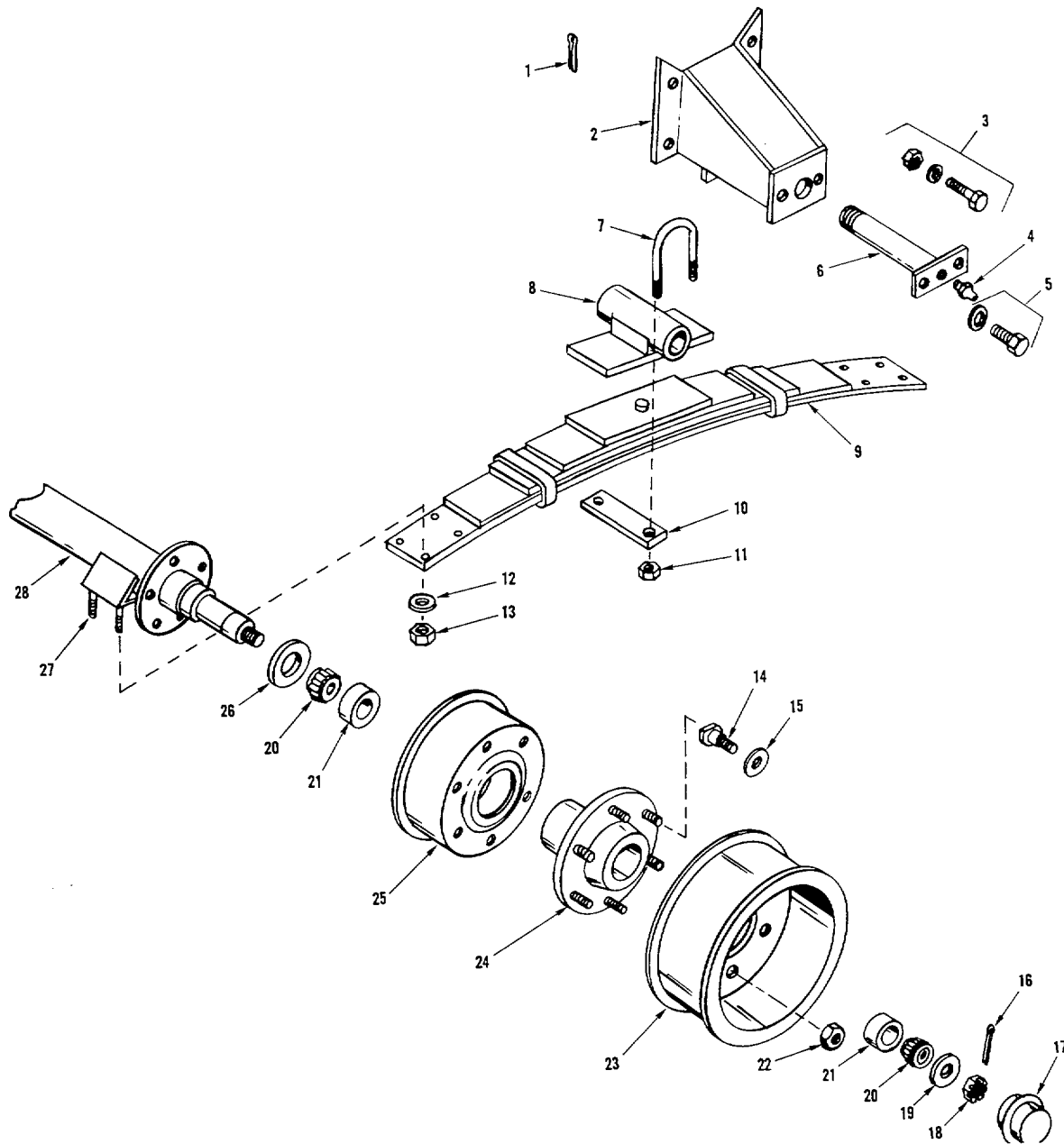


Figure 2. Parking brake lever and cable assembly.



AT 25650

Figure 3. Brake assembly - electrical brake (12 volt).



AT 25651

Figure 4. Suspension, wheel and axle assembly.

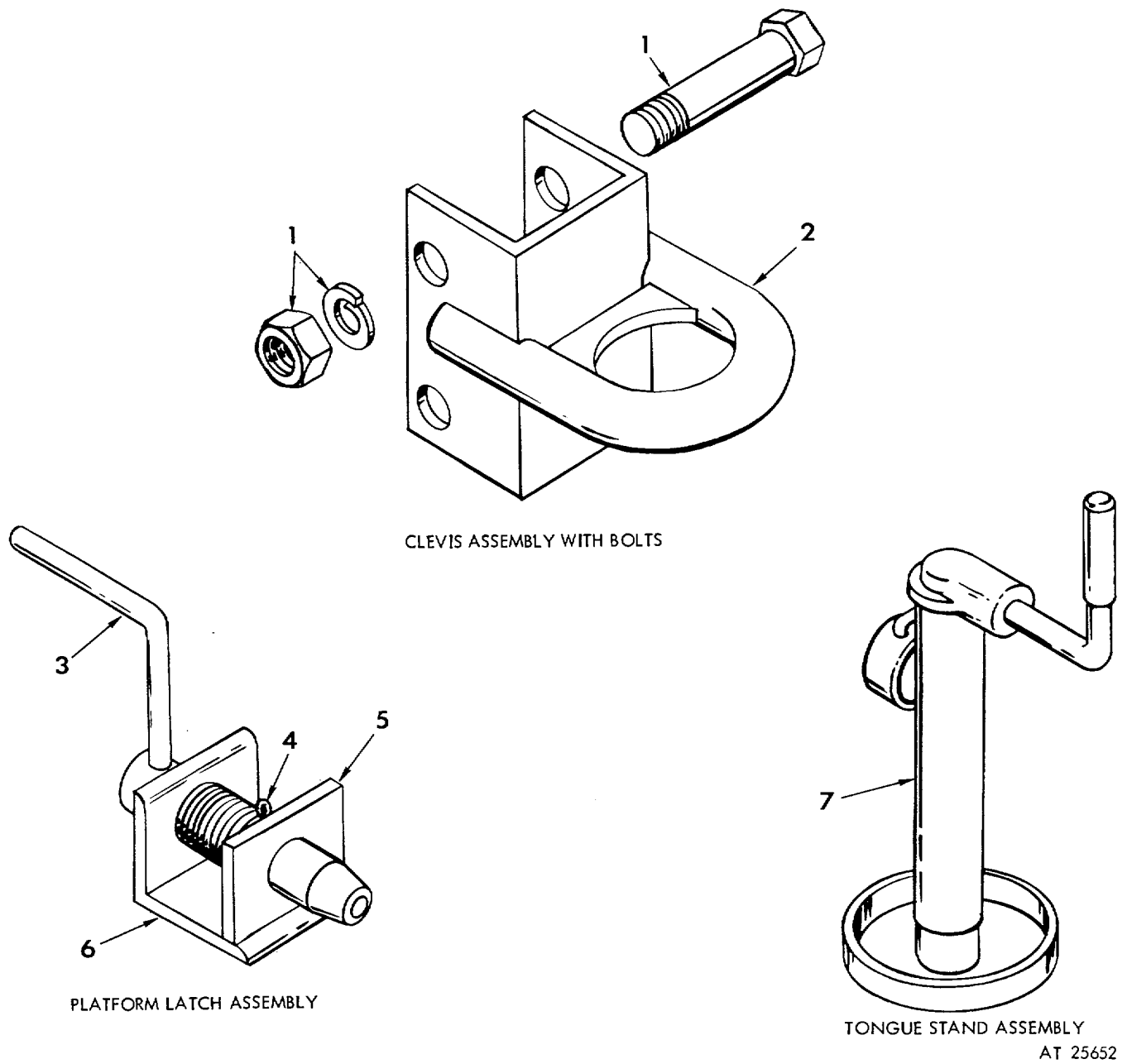
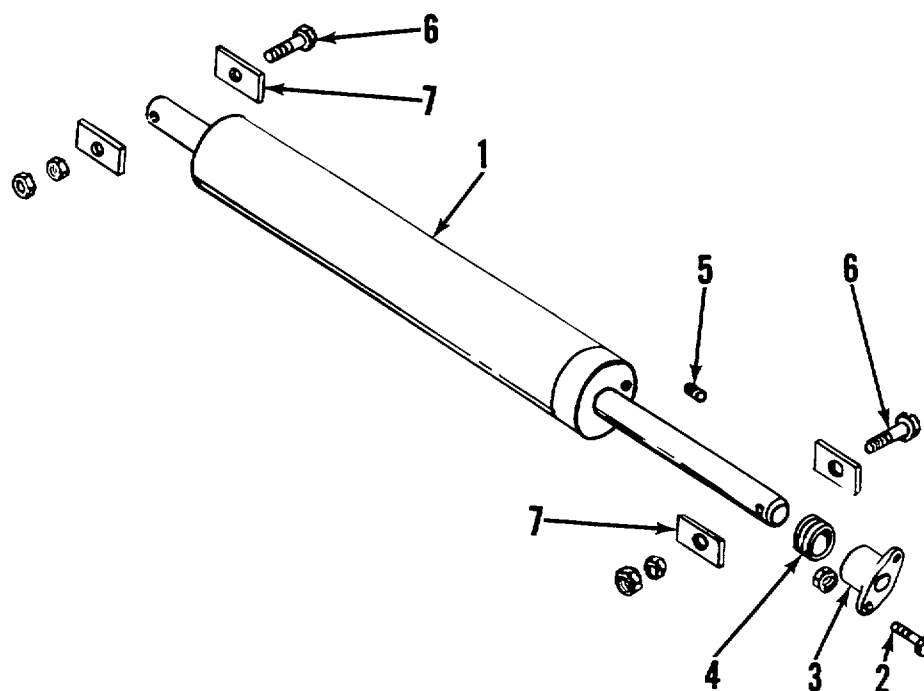


Figure 5. Trailer attaching parts assemblies.





AT 25653

Figure 6. Hydraulic tilt cylinder assembly.

## Section V. INDEX

## FEDERAL STOCK NUMBER CROSS-REFERENCE TO FIGURE AND ITEM NUMBER

| Stock Number  | Figure No. | Item No. |
|---------------|------------|----------|
| 2510-782-4294 | 4          | 9        |
| 2510-782-4295 | 4          | 6        |
| 2510-782-4296 | 4          | 10       |
| 2530-169-5786 | 2          | 5        |
| 2530-782-4266 | 2          | 6        |
| 2530-782-4273 | 3          | 15       |
| 2530-782-4286 | 3          | 12       |
| 2530-782-4268 | 2          | 7        |
| 2530-782-4269 | 2          | 1        |
| 2530-782-4270 | 4          | 28       |
| 2530-782-4271 | 2          | 9        |
| 2530-782-4276 | 3          | 9        |
| 2530-782-4277 | 3          | 8        |
| 2530-782-4278 | 3          | 14       |
| 2530-782-4279 | 3          | 13       |
| 2530-782-4282 | 2          | 8        |
| 2530-782-4283 | 2          | 3        |
| 2530-782-4284 | 3          | 7        |
| 2530-782-4312 | 3          | 1        |
| 2530-782-4313 | 3          | 10       |
| 2530-782-4314 | 4          | 17       |
| 2530-782-4315 | 4          | 26       |
| 2530-782-4316 | 4          | 22       |
| 2530-782-4317 | 4          | 24       |
| 2530-782-4318 | 4          | 25       |
| 2530-782-4319 | 4          | 23       |
| 2530-782-4320 | 3          | 2        |
| 2530-921-7306 | 5          | 7        |
| 2530-921-7308 | 5          | 6        |
| 2590-772-8813 | 1          | 26       |
| 2590-782-4257 | 1          | 9        |

| Stock Number  | Figure No. | Item No. |
|---------------|------------|----------|
| 2590-782-4258 | 1          | 19       |
| 2590-782-4259 | 1          | 18       |
| 2590-782-4260 | 1          | 17       |
| 2590-782-4261 | 1          | 16       |
| 2590-782-4262 | 1          | 15       |
| 2590-782-4297 | 6          | 3        |
| 2590-782-4298 | 6          | 1        |
| 3110-100-0544 | 4          | 21       |
| 3110-100-3541 | 4          | 20       |
| 3120-880-3066 | 3          | 6        |
| 4730-013-8105 | 4          | 4        |
| 5305-045-1976 | 1          | 7        |
| 5305-880-9747 | 3          | 11       |
| 5305-880-9763 | 4          | 5        |
| 5305-880-9772 | 2          | 4        |
| 5305-880-9773 | 4          | 27       |
| 5306-984-6210 | 1          | 5        |
| 5306-045-1976 | 1          | 7        |
| 5306-880-9709 | 4          | 7        |
| 5306-880-9784 | 1          | 10       |
| 5306-880-9785 | 5          | 1        |
| 5307-017-0534 | 4          | 14       |
| 5310-017-0508 | 4          | 18       |
| 5310-017-0511 | 4          | 19       |
| 5310-017-0512 | 4          | 15       |
| 5310-017-0518 | 4          | 12       |
| 5310-019-3446 | 4          | 11       |
| 5315-234-1664 | 4          | 16       |
| 5315-234-1673 | 4          | 1        |
| 5315-298-1499 | 5          | 4        |
| 5935-782-8661 | 3          | 5        |
| 6220-577-3434 | 1          | 3        |
| 6220-577-3435 | 1          | 3        |
| 6220-669-5623 | 1          | 6        |

| Stock Number  | Figure No. | Item No. |
|---------------|------------|----------|
| 6220-726-1916 | 1          | 2        |
| 6220-727-3288 | 1          | 4        |
| 6220-846-9745 | 1          | 8        |
| 9905-202-2795 | 1          | 12       |
| 9905-202-3639 | 1          | 11       |

## REFERENCE NUMBER CROSS-REFERENCE TO FIGURE AND ITEM NUMBER

| Reference No. | Mfg. Code | Fig. No. | Item No. |
|---------------|-----------|----------|----------|
| MS24665       | 96906     | 4        | 16       |
| MS35387-1     | 96906     | 1        | 12       |
| MS35387-2     | 96906     | 1        | 11       |
| MS35423-1     | 96906     | 1        | 1        |
| MS35423-2     | 96906     | 1        | 2        |
| MS35424-1     | 96906     | 1        | 3        |
| MS35424-2     | 96906     | 1        | 4        |
| MS51302-1     | 96906     | 1        | 8        |
| MS51329-1     | 96906     | 1        | 6        |
| MS75021       | 96906     | 1        | 14       |
| 30847         | 23379     | 3        | 15       |
| 42680         | 23379     | 3        | 6        |
| 46424         | 23379     | 3        | 2        |
| 48754         | 23379     | 3        | 3        |
| 48755         | 23379     | 3        | 4        |
| 48760         | 23379     | 3        | 14       |
| 48761         | 23379     | 3        | 13       |
| 48770         | 23379     | 3        | 5        |
| 56210         | 23379     | 3        | 10       |
| 56214         | 23379     | 3        | 1        |
| 56222         | 23379     | 3        | 9        |
| 56227         | 23379     | 3        | 8        |
| 56266         | 23379     | 3        | 12       |
| 58921         | 23379     | 3        | 7        |
| 58929         | 23379     | 3        | 11       |
| 7728813       |           | 1        | 26       |
| 10108         | 23379     | 4        | 5        |
| 10159         | 23379     | 5        | 4        |
| 10160         | 23379     | 5        | 1        |
| 10167         | 23379     | 6        | 5        |
| 10168         | 23379     | 6        | 4        |

| Reference No. | Mfg. Code | Fig. No. | Item No. |
|---------------|-----------|----------|----------|
| 10170         | 23379     | 6        | 7        |
| 10171         | 23379     | 6        | 3        |
| 10173         | 23379     | 5        | 7        |
| 10175         | 23379     | 5        | 6        |
| 10177         | 23379     | 5        | 3        |
| 10188         | 23379     | 6        | 6        |
| 10217         | 23379     | 4        | 26       |
| 10218         | 23379     | 4        | 20       |
| 10219         | 23379     | 4        | 21       |
| 10231         | 23379     | 4        | 27       |
| 10232         | 23379     | 4        | 12       |
| 10233         | 23379     | 4        | 13       |
| 10234         | 23379     | 4        | 9        |
| 10236         | 23379     | 4        | 11       |
| 10237         | 23379     | 4        | 10       |
| 10238         | 23379     | 4        | 7        |
| 10239         | 23379     | 4        | 8        |
| 10242         | 23379     | 4        | 4        |
| 10243         | 23379     | 4        | 3        |
| 10247         | 23379     | 4        | 18       |
| 10273         | 23379     | 6        | 1        |
| 10303         | 23379     | 4        | 1        |
| 10304         | 23379     | 4        | 6        |
| 10330         | 23379     | 4        | 2        |
| 10600         | 23379     | 2        | 1        |
| 10601         | 23379     | 2        | 7        |
| 10602         | 23379     | 2        | 6        |
| 10603         | 23379     | 2        | 4        |
| 10604         | 23379     | 2        | 2        |
| 10605         | 23379     | 2        | 9        |
| 10606         | 23379     | 2        | 8        |
| 10607         | 23379     | 2        | 3        |
| 10608         | 23379     | 2        | 5        |
| 10611         | 23379     | 1        | 5        |
| 10612         | 23379     | 1        | 7        |

| Reference No. | Mfg. Code | Fig. No. | Item No. |
|---------------|-----------|----------|----------|
| 10613         | 23379     | 1        | 9        |
| 10614         | 23379     | 1        | 10       |
| 10615         | 23379     | 1        | 13       |
| 10616         | 23379     | 1        | 15       |
| 10617         | 23379     | 1        | 16       |
| 10618         | 23379     | 1        | 17       |
| 10619         | 23379     | 1        | 18       |
| 10620         | 23379     | 1        | 19       |
| 10621         | 23379     | 1        | 20       |
| 10622         | 23379     | 1        | 21       |
| 10623         | 23379     | 1        | 22       |
| 10624         | 23379     | 1        | 23       |
| 10625         | 23379     | 1        | 24       |
| 10626         | 23379     | 1        | 25       |
| 10627         | 23379     | 5        | 2        |
| 10628         | 23379     | 4        | 15       |
| 10629         | 23379     | 4        | 28       |
| 10630         | 23379     | 4        | 25       |
| 10631         | 23379     | 4        | 24       |
| 10632         | 23379     | 4        | 14       |
| 10633         | 23379     | 4        | 23       |
| 10634         | 23379     | 4        | 22       |
| 10635         | 23379     | 4        | 19       |
| 10636         | 23379     | 4        | 16       |
| 10637         | 23379     | 4        | 17       |
| 10638         | 23379     | 6        | 8        |

By Order of the Secretary of the Army:

Official:

W. C. WESTMORELAND,  
*General, United States Army,  
Chief of Staff.*

KENNETH G. WICKHAM,  
*Major General, United States Army,  
The Adjutant General*

☆ U. S. GOVERNMENT PRINTING OFFICE: 1970 - 390-939/1306.



